

Alfresco – A Fresh Approach to Content Management

Tutorial

Overview	2
Logging in for the first time.....	3
Adding New Users	5
Home Spaces	7
Creating Content	10
In-line Content Editing	10
Managing Properties and Meta-Data	12
Spaces	14
Working with Space Templates.....	15
Smart Spaces	16
Adding Rules	17
Adding Aspects	19
Using the Clipboard.....	21
Collaborating with Other Users	23
Checking Out Content.....	25
Checking In Content	26
Version History	27
Sending Content for Review	28
Uploading and Transforming Content	29
Categories and Advanced Search.....	32
Summary	35

Overview

This document provides an overview tutorial of the Alfresco™ Open Source Content Management System to accompany the download of the system available at: <http://www.alfresco.org/download.html>. You can also access an on-line demo by going to: <http://www.alfresco.org/flash/alfrescov9d.html>.

In this tutorial we will go through the process of starting to work with Alfresco, right from the point after it is installed and running. We will walk through the process of logging in, adding a new user, and creating and managing content. We will also introduce the concept of a Smart Space, which is a collaborative space that uses rules to simplify the handling, management and transformation of content. We will also show how to use additional properties and categories to organize and find content.

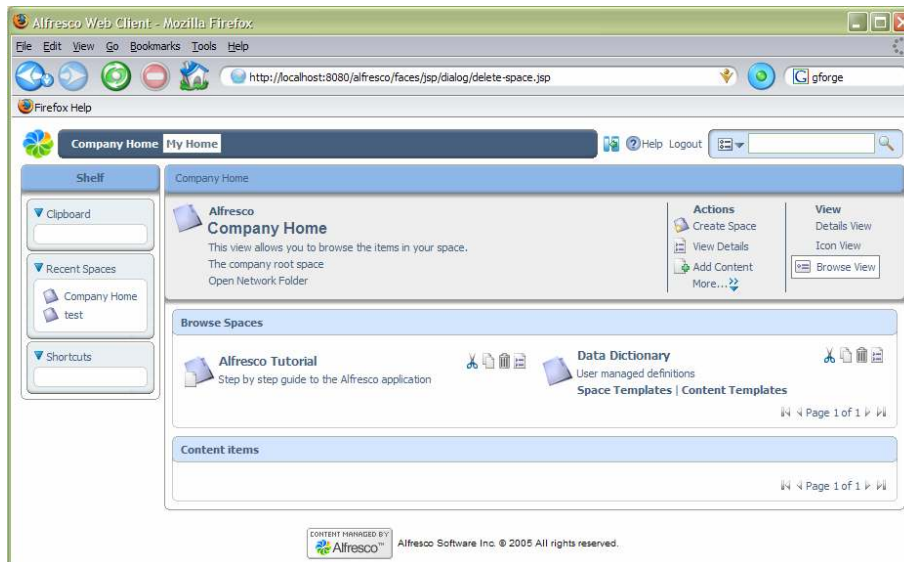
Before starting, make sure that your system has been installed properly. The installation is fast and easy for either Microsoft Windows® or Linux. You can also choose to install it with JBoss® Portal 2.0 or Apache Tomcat. If you have any issues in the installation, you can find help in the Alfresco Forums at: <http://www.alfresco.org/forums/>

To begin, if Alfresco was installed from the Tomcat bundle, start the web client from: <http://localhost:8080/alfresco>

If Alfresco was installed from the JBoss bundle, you may use the same URL as for Tomcat, or start the web client in the portal from: <http://localhost:8080/portal> and navigate to 'web-client' from the Page Menu and then maximize the portlet (top-right-most icon).

Logging in for the first time

When Alfresco is installed, it creates an administration user called 'admin' with a default password of 'admin'. So, let's login and we'll be taken to the *Company Home* as shown in the screen below.



First, a bit of orientation. There are 3 main areas in the Alfresco user interface: a toolbar along the top; the Shelf; and the main working area.

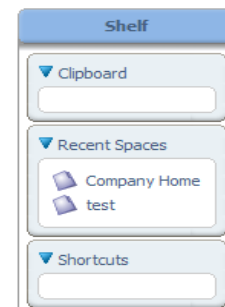
Toolbar



The toolbar contains two main navigation buttons that take us to the *Company Home* or your *Home Space*, as well as search and help capabilities. We can also hide and show the Shelf using the icon to the left of the help.

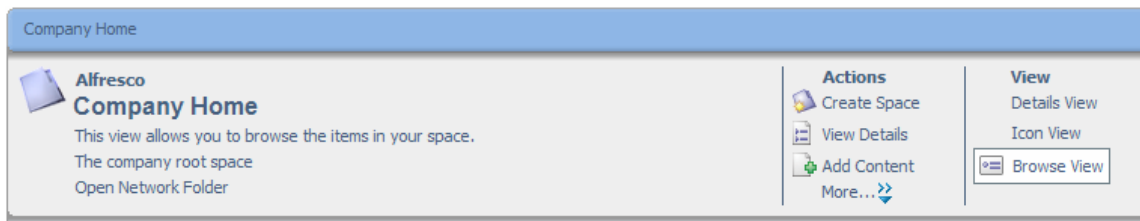
Shelf

The Shelf contains a number of different features to help work with content, such as the Clipboard and Shortcuts. The Recent Spaces provides an easy way to go back to a Space we have recently viewed.



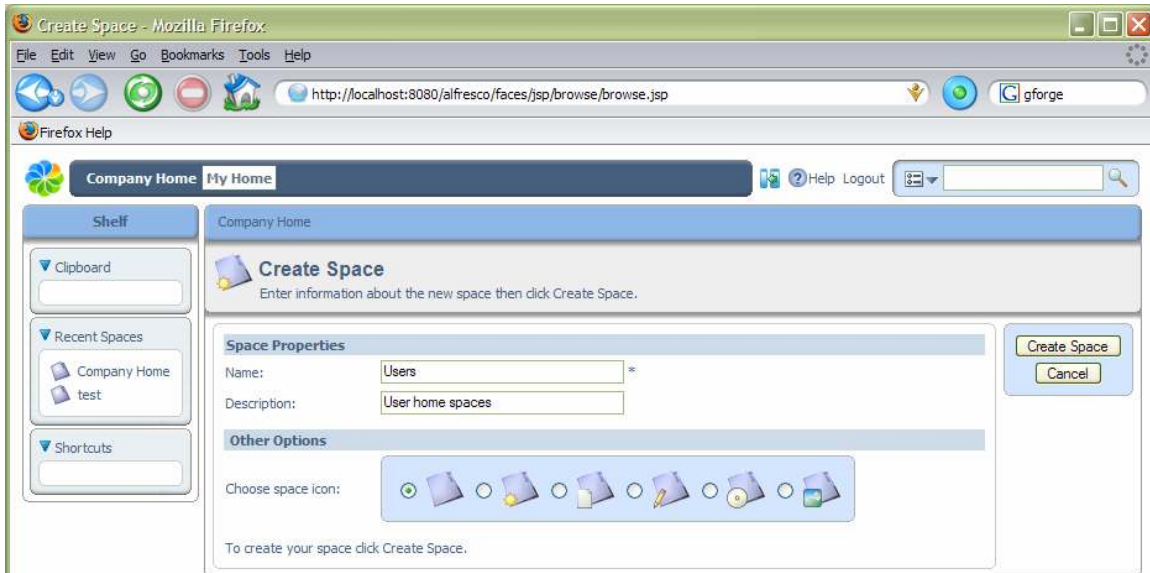
Working Area

The working area will change depending on what information we are looking at or what task we are performing. The top of the working area will always have a navigation breadcrumb that allows us to jump to any part of the breadcrumb path. For information views we will usually have a summary area along with actions or alternative views. The details and options will change depending on what we are looking at and doing, as well as who we are.

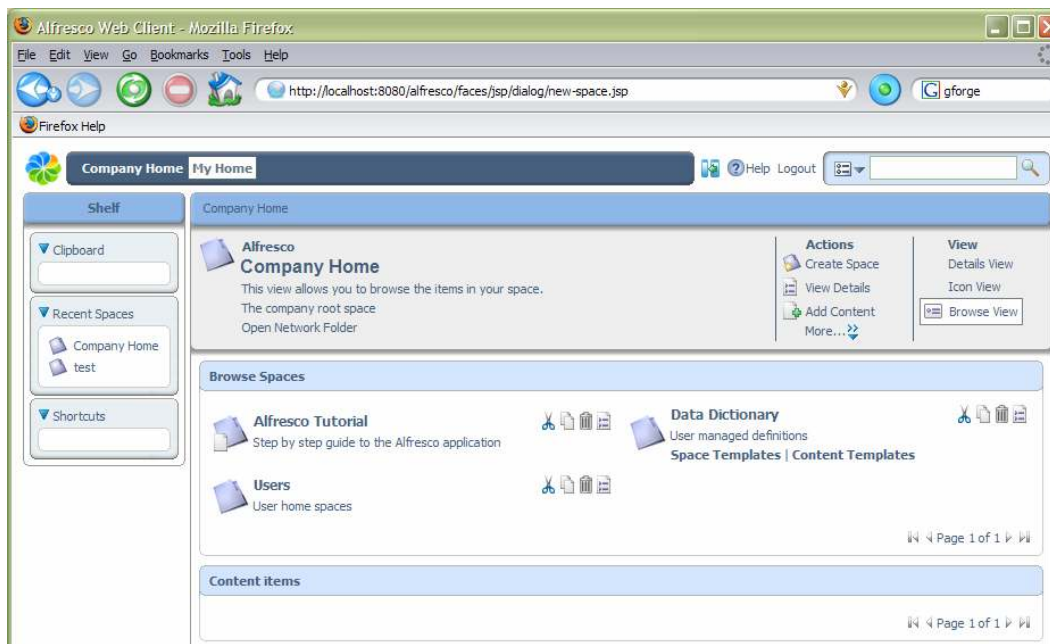


Adding New Users

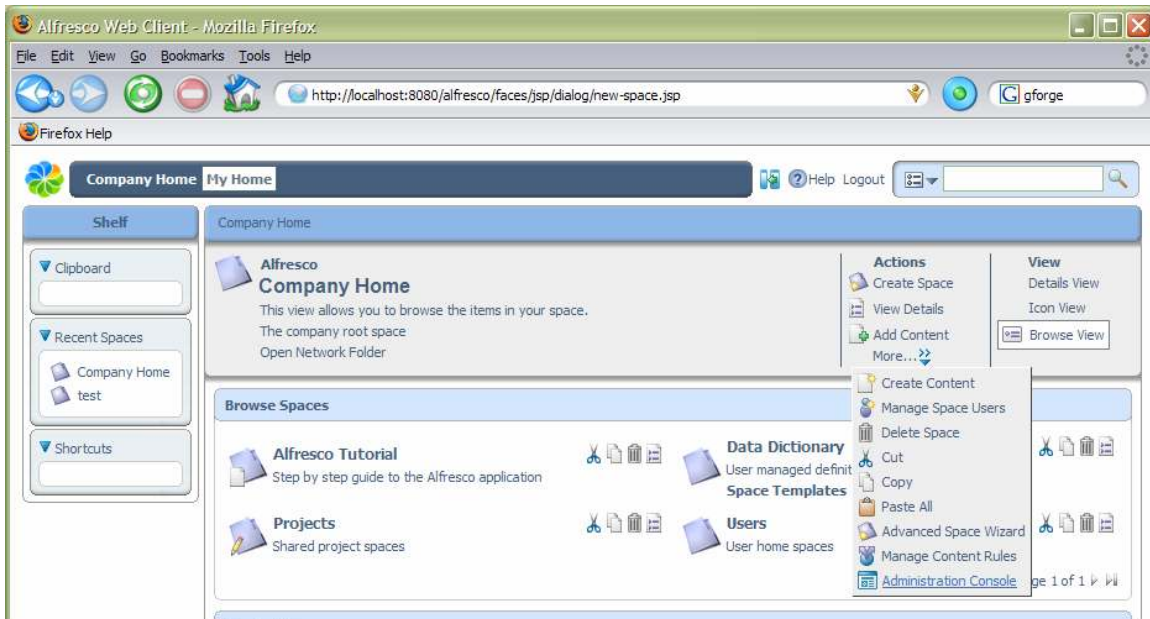
Before we add some new users and define their own personal working spaces, we need to decide how we are going to organise our repository and where user home spaces live. For this tutorial we are going to put the user homes all in the same location, so we need to make a space to contain them all. We are going to create a space named 'Users' in the 'Company Home', so, since we are in the right place, we just need to select *Create Space* from *Actions* and we will be taken to the Create Space dialog.



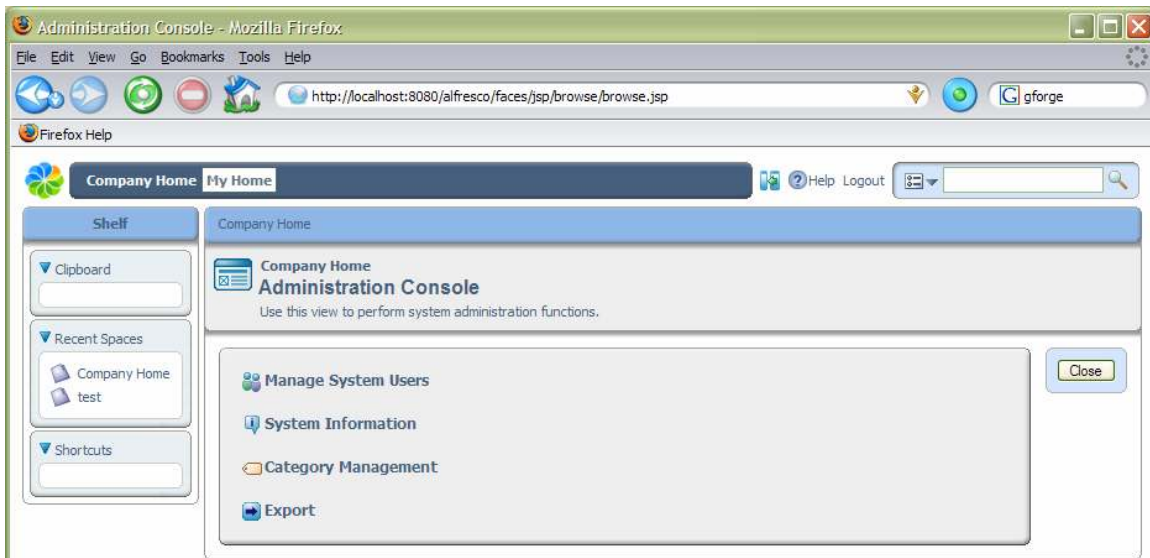
Now fill in 'Users' for the *Name* with any descriptive text in *Description*, and choose an icon to use for the space, then click *Create Space*. We have now created a space.



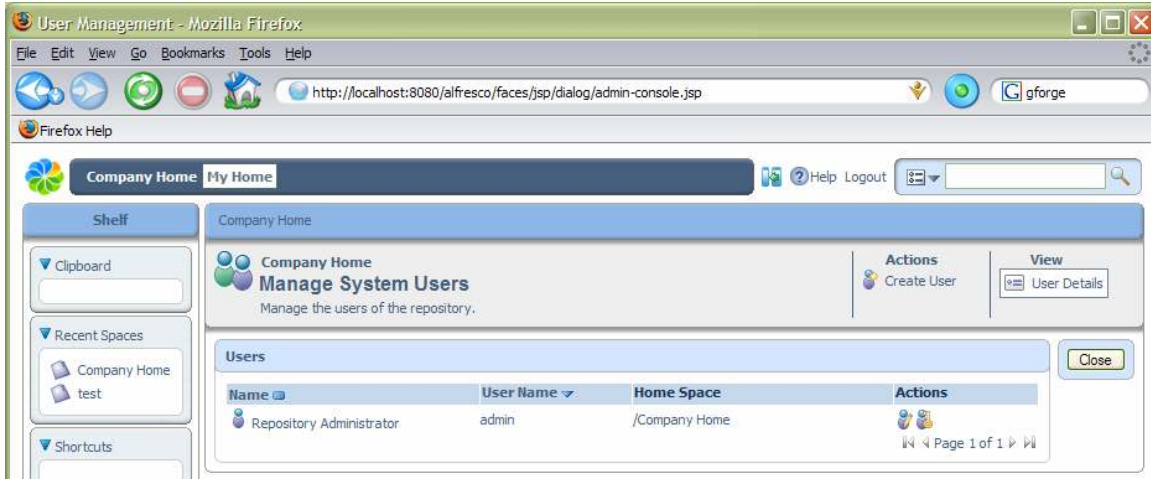
While we are here, create another space named 'Projects' that we will come back to later. Next we want to add a new user. As we are logged in as an administrator, there is an action under the *Actions More* link called *Administrative Console* that we need to use.



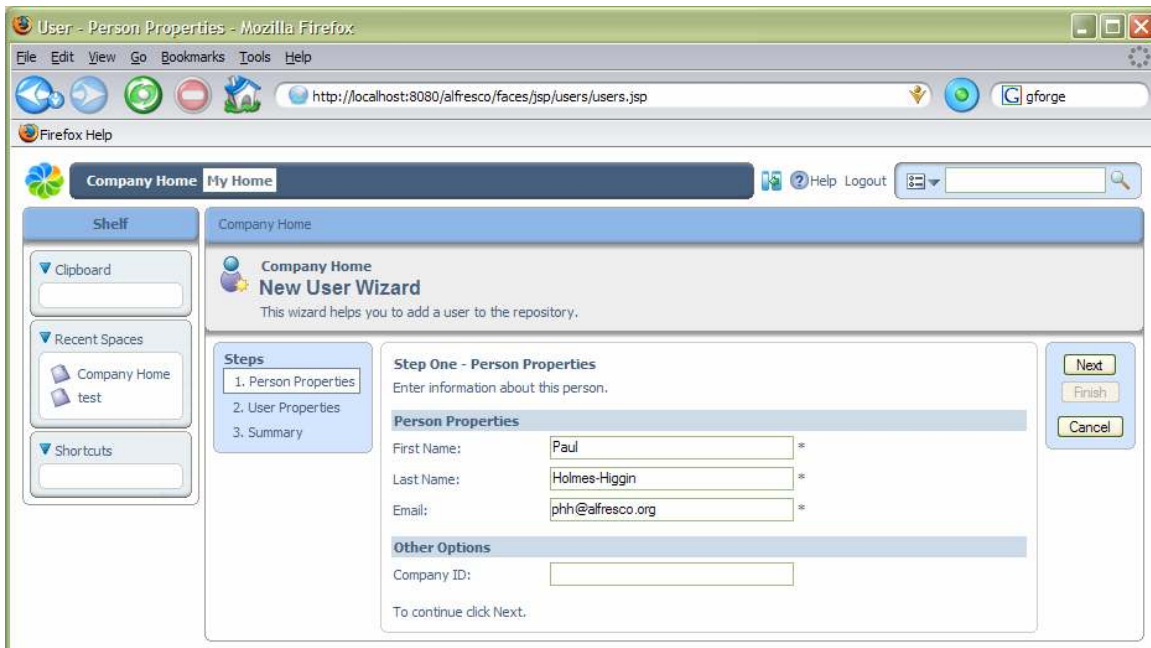
This opens the Administration Console that has a number of options available.



The one we are interested in is *Manage System Users*. Click on this and we will be presented with a list of current users, including the pre-configured 'admin' account. We need to select the *Create User* action, which will take us to the new user wizard.

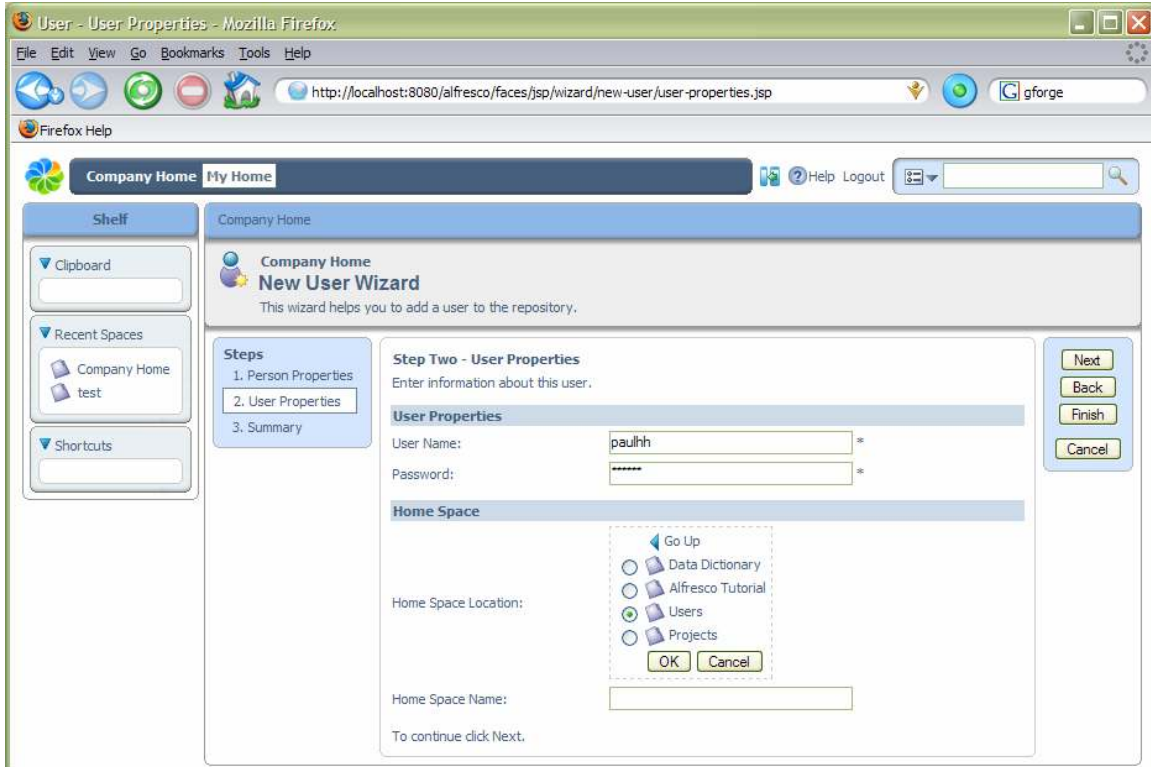


The new user wizard prompts us for details of the person's name and email in the first step.

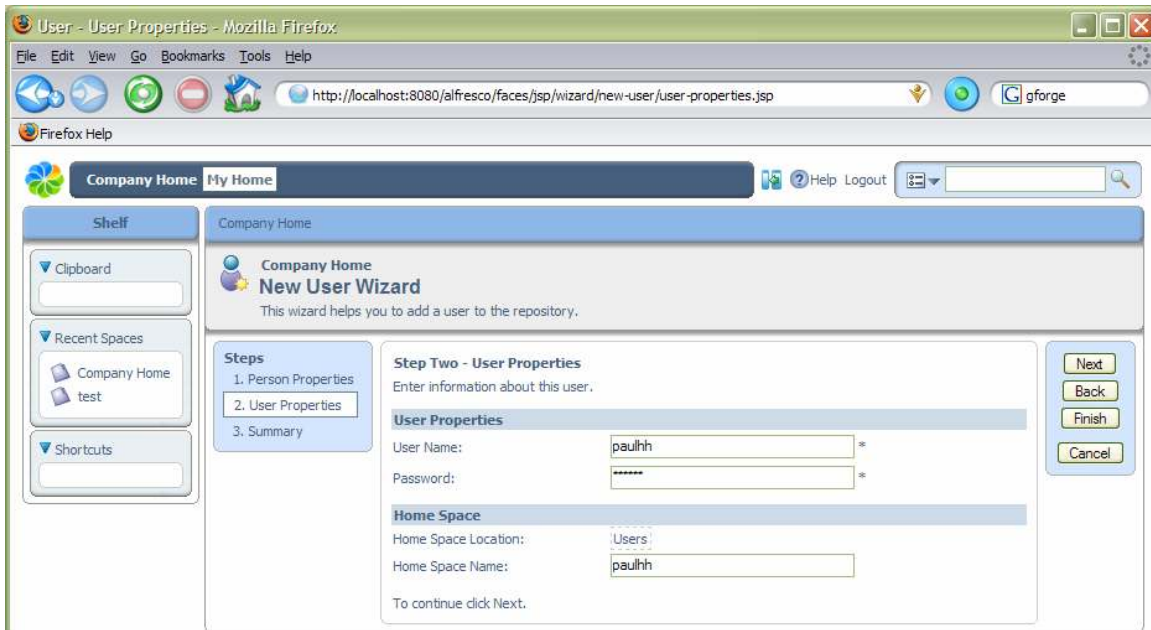


Home Spaces

In the second step we give the username details, as well as the location for where their home space should be created. To use the space selector, navigate the links to move up and down the space hierarchy, selecting the required space's radio button, then click *OK*. For our example, we are going to put the new home space in the 'Users' space we created earlier.



Then give the name for their home space: here we are using 'paulhh'.



We can select *Finish* now, or go to the next step to see a summary of the details we have entered and then finish. This will create the new user and their home space and return us to the list of users. While we are here, we will create another user for later on named 'Joe'.

User Management - Mozilla Firefox

File Edit View Go Bookmarks Tools Help

http://localhost:8080/alfresco/faces/jsp/wizard/new-user/user-properties.jsp

Firefox Help

Company Home My Home

Help Logout

Shelf

Clipboard

Recent Spaces

Company Home test

Shortcuts

Company Home

Manage System Users

Manage the users of the repository.

Actions

Create User

View

User Details

Users

Name	User Name	Home Space	Actions
Repository Administrator	admin	/Company Home	
Paul Holmes-Higgin	paulhh	/Company Home/Users/paulhh	

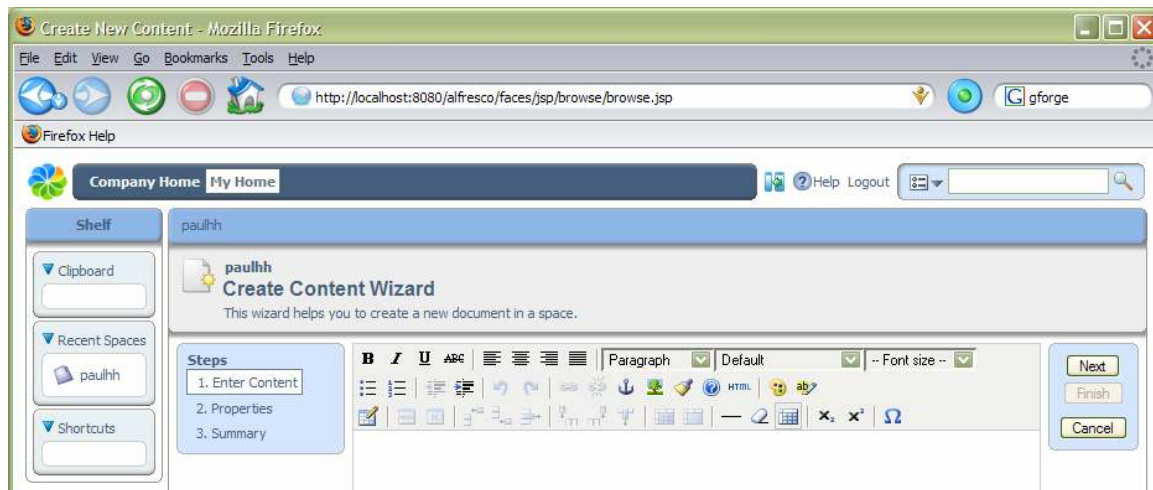
Page 1 of 1

Creating Content

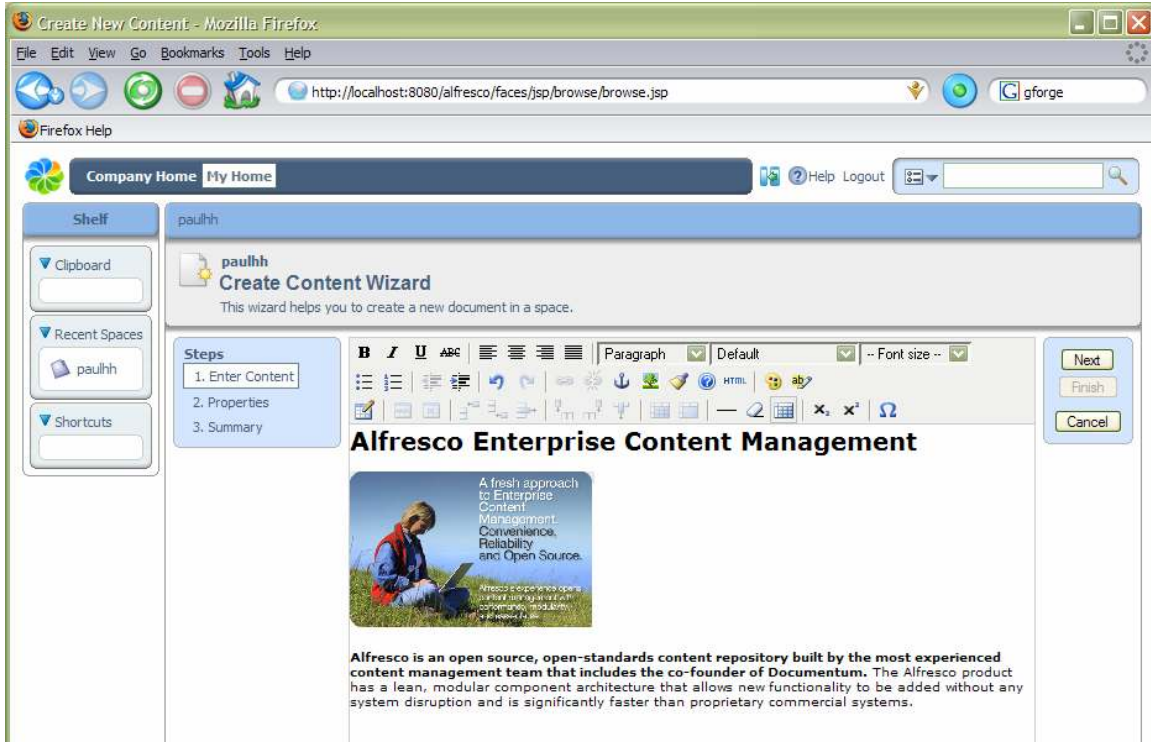
We can now login as the newly created user: click *Logout* from the toolbar and then login using the details for the new user. This time, the user is taken to their Home Space, but they can still easily navigate to the Company Space and elsewhere. All the options to create sub-spaces and add content are available. The first thing we are going to do is see how we can create web content directly in the browser.

In-line Content Editing

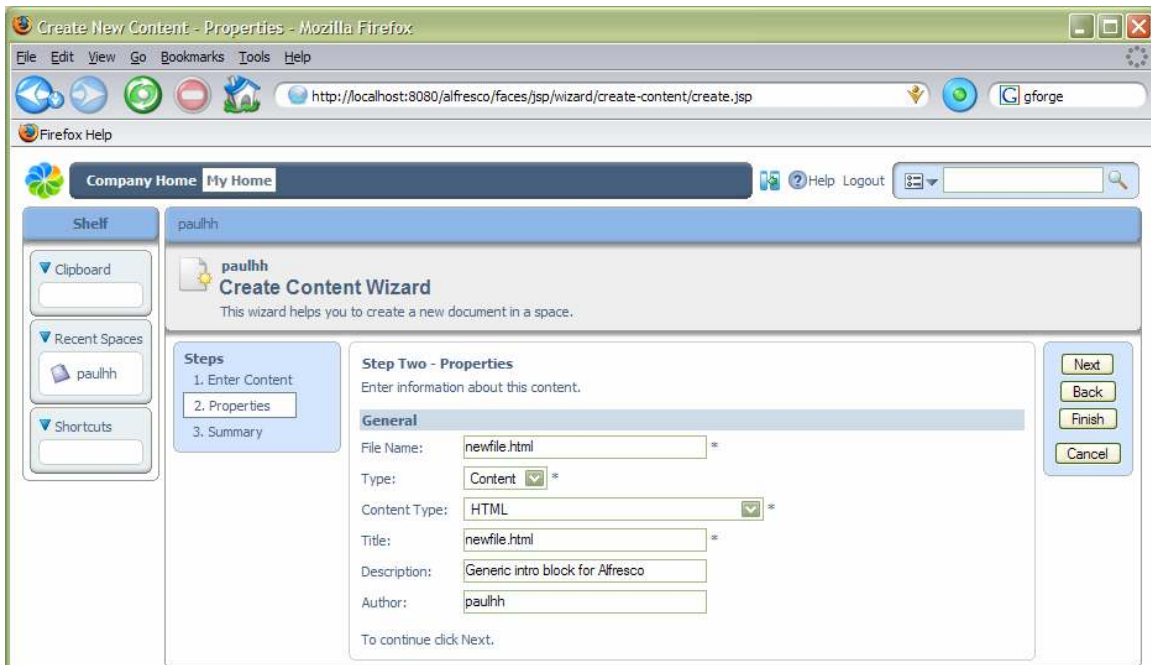
From the *Actions* menu for the user's home space, select *Create Content* (it is available from the More popup). A wizard is started that allows you to create new content.



We can now add some HTML content through the WYSIWYG editor. We will add a web page as an example, including text formatting and images.

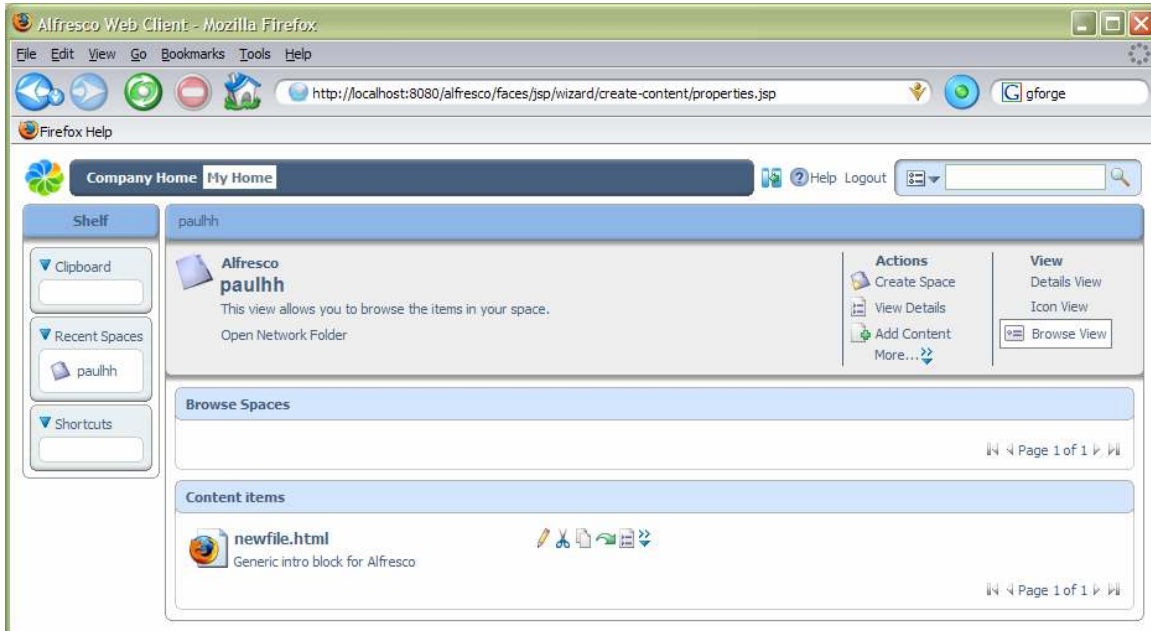


Selecting the *Next* button in the wizard takes us to a step where we can give whatever appropriate properties we want.



We can now either select *Next* to take us to a summary page of what new content is going to be created, or just select *Finish* now. In all Alfresco wizards, the *Finish* button

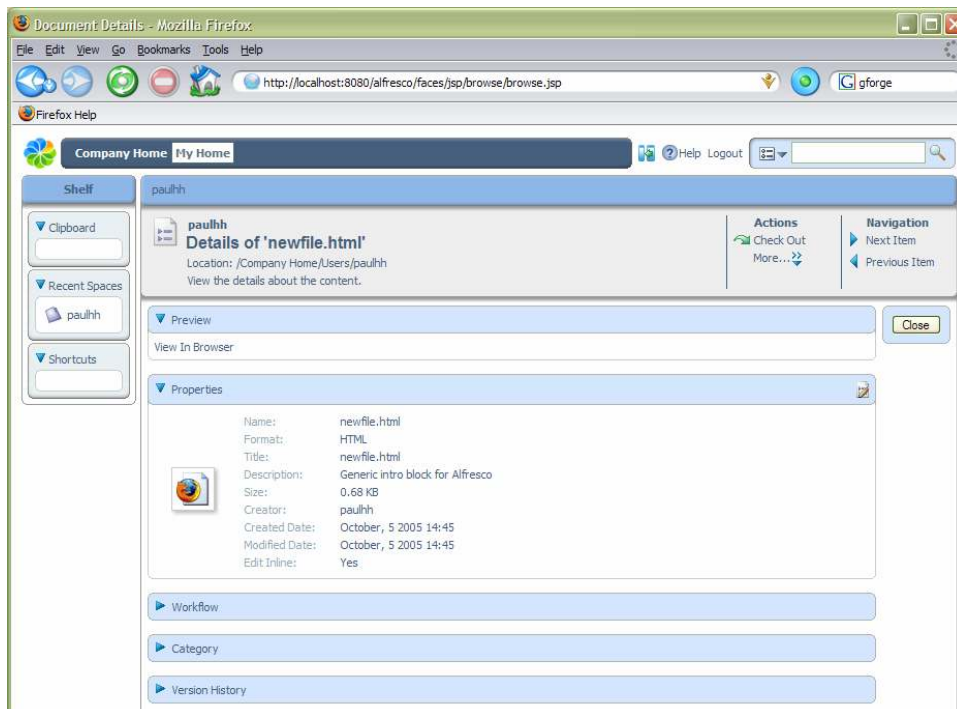
becomes enabled when there is enough information to complete the task, any additional steps are optional.



We have now created our first piece of content in the repository!

Managing Properties and Meta-Data

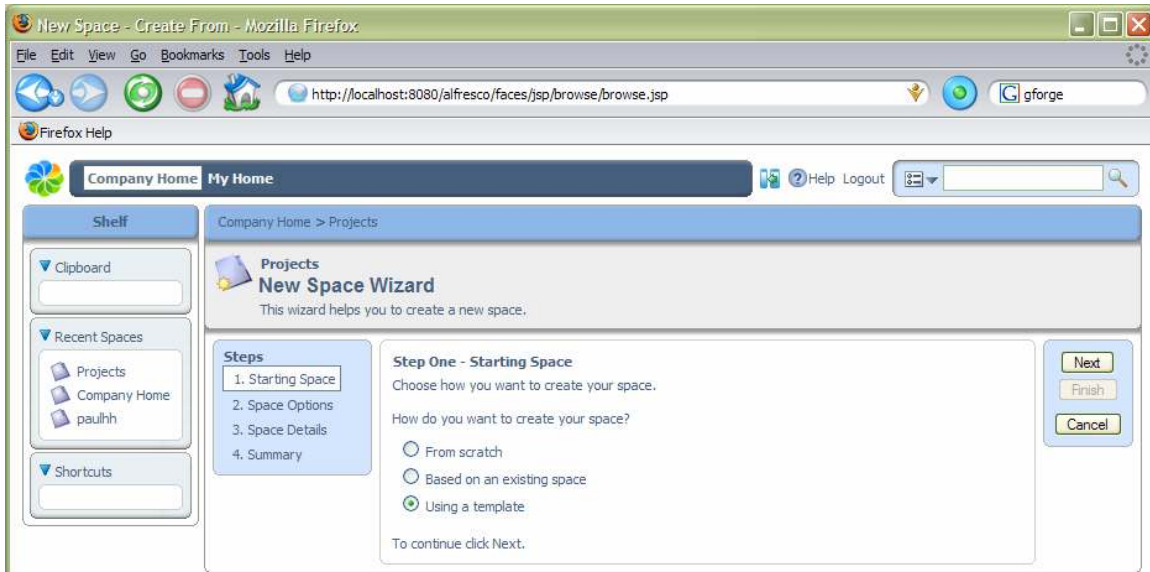
To see the details of the content we can select the *View Details*, one of the icons to the right of the content item (not the space details action in the header).



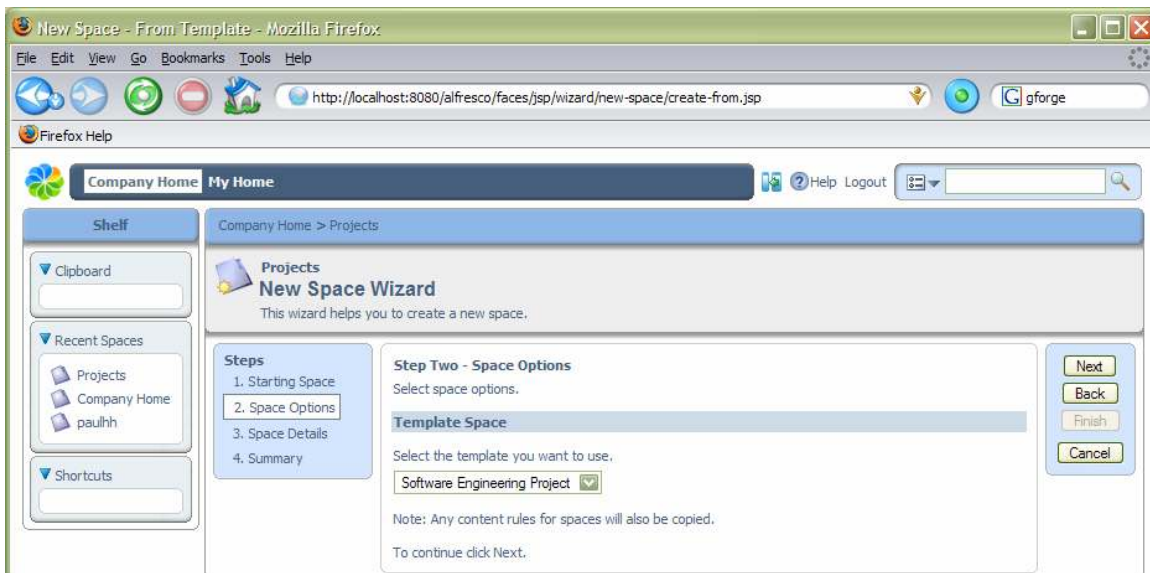
From the content details page, we can change any of the properties by selecting the edit icon for the Properties panel (right-hand side). Selecting the content name in the Preview panel will request the content to be viewed or downloaded through the browser. We may also download the content as a file by selecting the content icon or name in the space browser.

Spaces

Next, we are going to set up a new project space where we can work on some content with other team members. Navigate to the Company Space (either from the breadcrumb or the toolbar) and then into the Projects space we created earlier. This time, rather than create sub-spaces all by hand, we are going to use a template space that contains all the standard elements we need. From the space *Actions*, select *Advanced Space Wizard*.

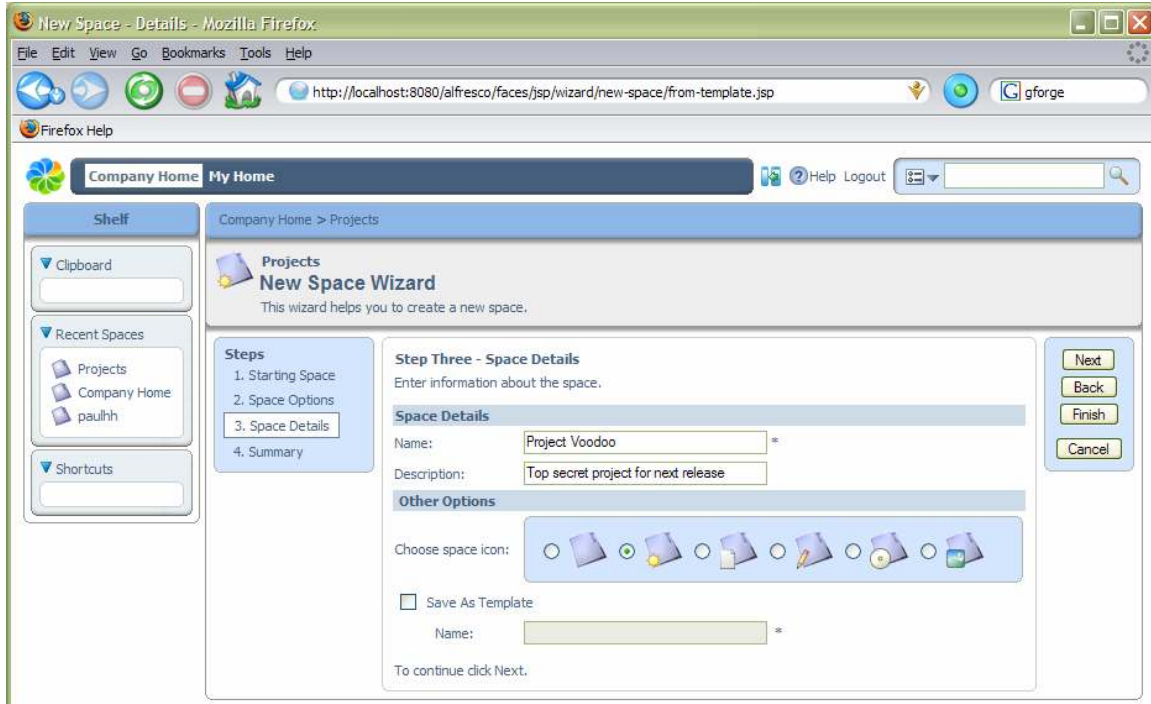


It is possible to create a complete tree of sub-spaces by basing the new space on an existing space or a template. We are going to use a template, so selecting *Next* takes us to a step where we can choose which template.



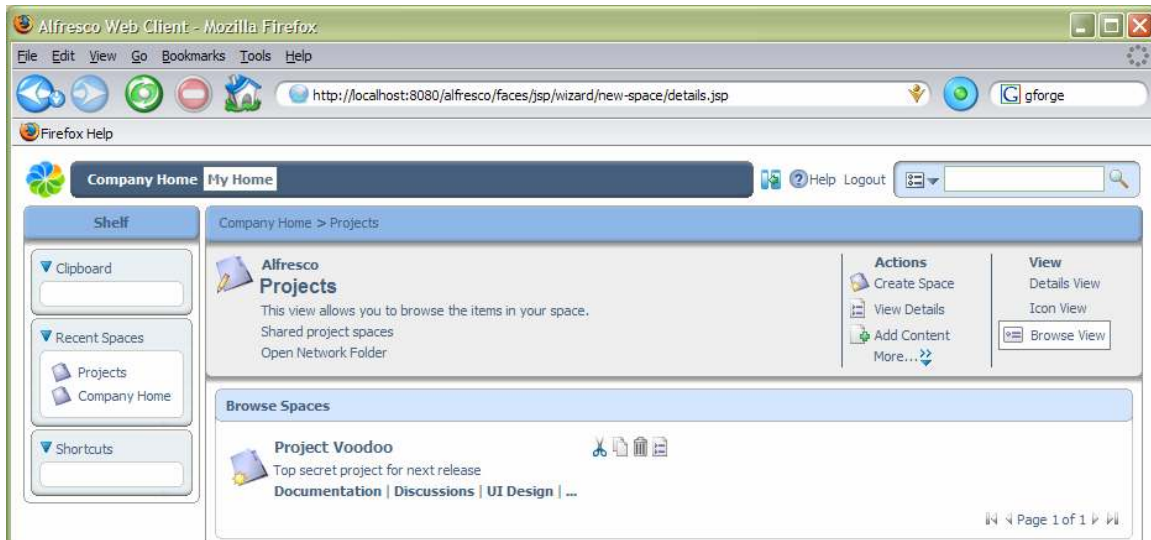
Working with Space Templates

We are going to use the *Software Engineering Project* template, so we choose this and select *Next* to specify the details we want for the new space including its name – in this case ‘Project Voodoo’.



The screenshot shows the 'New Space Wizard' in Step Three: Space Details. The interface includes a sidebar with 'Shelf' (Clipboard, Recent Spaces, Shortcuts) and a main content area. The main area has a 'Steps' list (1. Starting Space, 2. Space Options, 3. Space Details, 4. Summary) and a 'Space Details' section. The 'Space Details' section contains a 'Name' field with the value 'Project Voodoo', a 'Description' field with the value 'Top secret project for next release', and an 'Other Options' section with a 'Choose space icon' row and a 'Save As Template' checkbox. The 'Next' button is highlighted.

Again, we can select *Next* to go to the summary page or select *Finish* now. We can see that a new space has been created with standard sub-spaces for an engineering project.

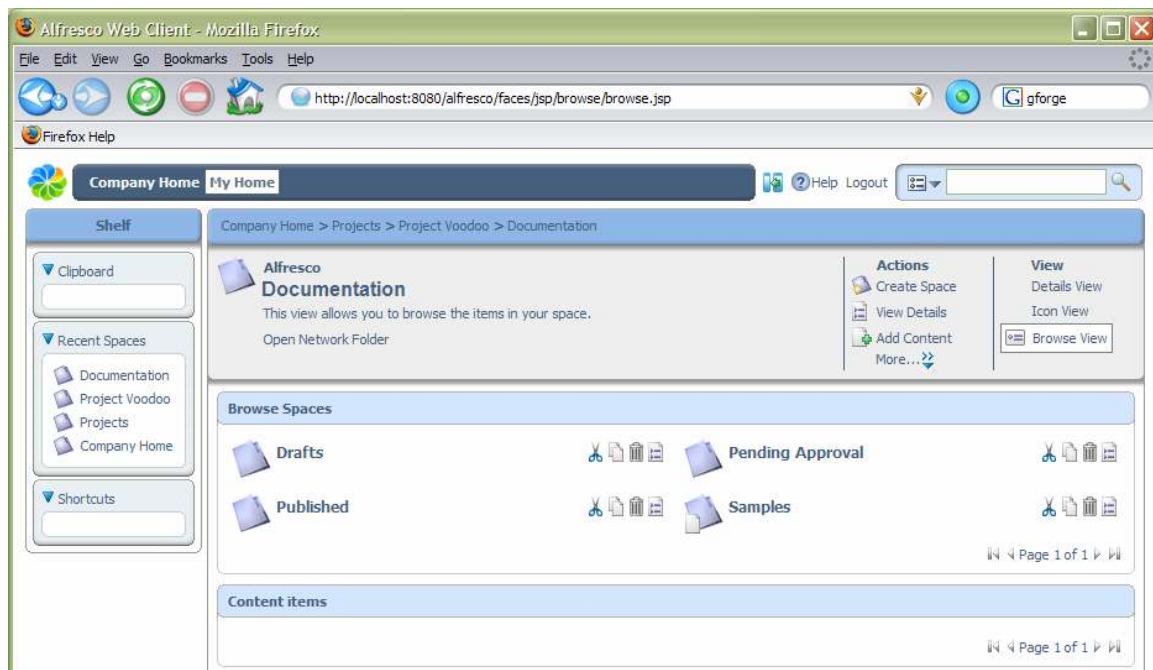


The screenshot shows the 'Alfresco Web Client' displaying the 'Project Voodoo' space. The interface includes a sidebar with 'Shelf' (Clipboard, Recent Spaces, Shortcuts) and a main content area. The main area has a 'Browse Spaces' section showing the 'Project Voodoo' space with the description 'Top secret project for next release' and sub-spaces 'Documentation', 'Discussions', and 'UI Design'. The 'Next' button is highlighted.

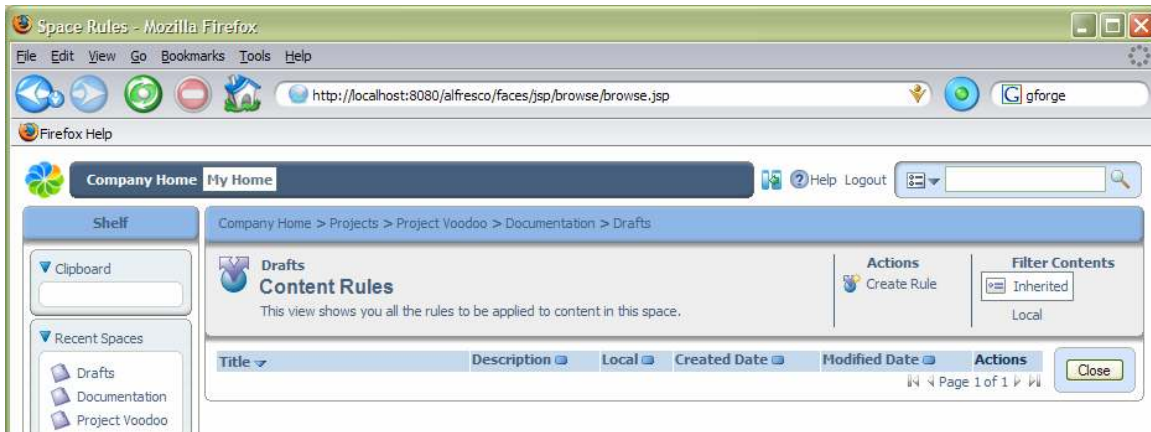
Smart Spaces

One of the key features of Alfresco is the ability to define rules that affect content within a space. These rules can be used to provide all kinds of creative solutions to automation and management of content. Rules are fired when content comes in or out of a space and may also apply to content directly in the space or in sub-spaces. A rule is made up of two main elements: the conditions on the content for the rule to match and the actions that are then performed. Any number of conditions and actions may be defined in a rule.

For now, we are going to add a few rules to illustrate their capabilities. We are going to make part of our new project space work in a more structured and auditable way. First we need to navigate to the Project Voodoo Documentation space.

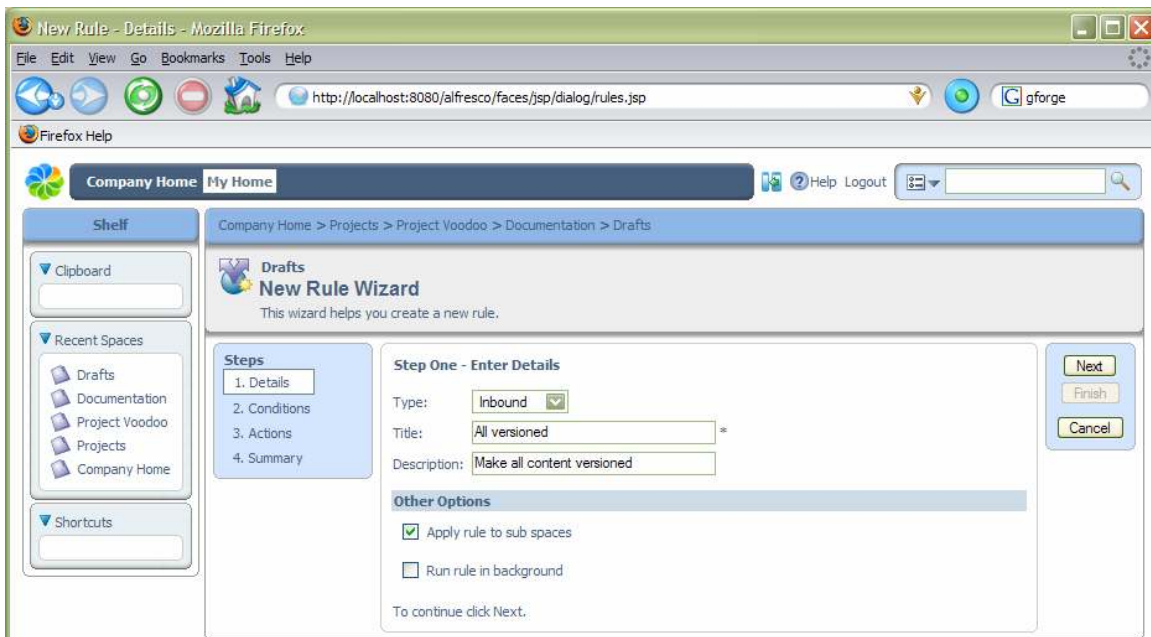


Here we can see 3 spaces that contain the documents in their different stages of completion, as well as a space with sample content. We are going to use the rules to set up a simple workflow that allows the documents to progress through these spaces. Also, since we want to allow several people to work on the documents, plus keep track of the different versions as they are edited and be able to see who changed the documents and when, then we are going to make all the content versioned. Since all the documents are going to start their lives in draft form, we navigate into the Drafts space and select the *Manage Content Rules* action (under More...).

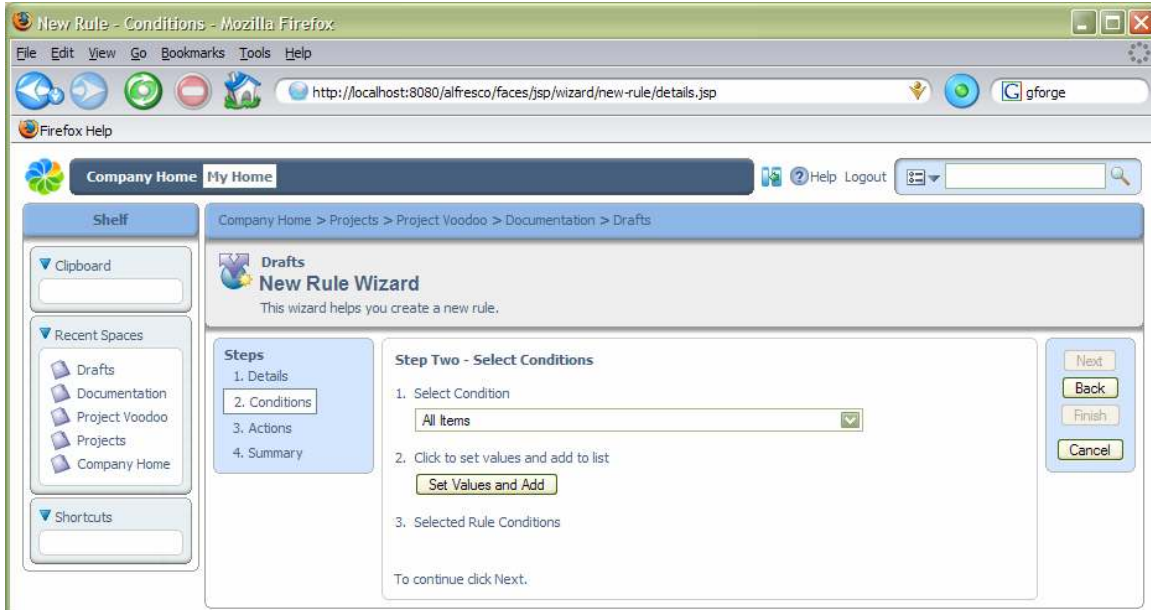


Adding Rules

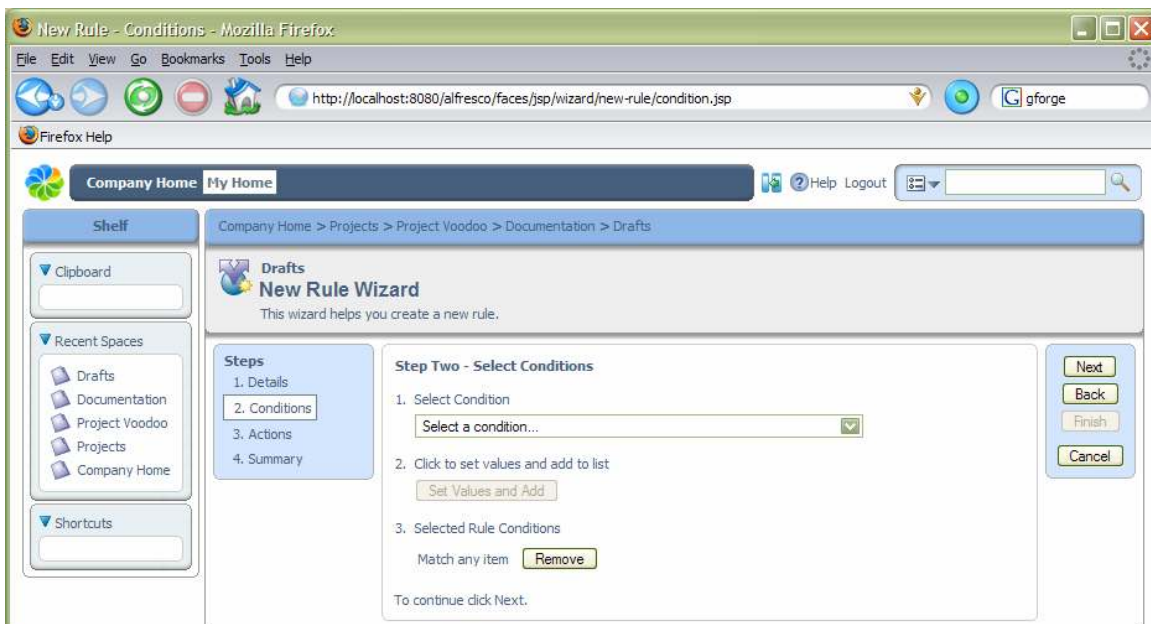
To add a new rule, select the *Create Rule* action, then we will be taken through the rule wizard to define it.



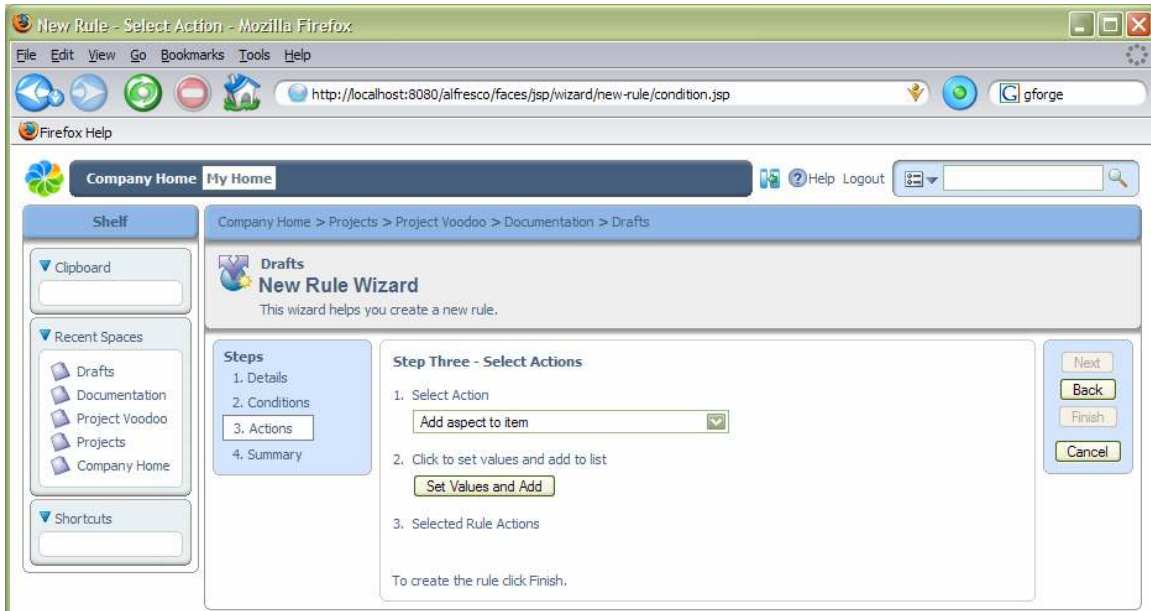
The first step allows us to choose what type of rule it is, that is to say, when the rule gets tested. Currently, the options are *inbound*, which means when content is copied, created or added to the space, and *outbound*, when content is moved or deleted from the space. We can give a title to identify the rule as well as a brief description – in this case we will give it the title ‘All versioned’. We will also enable the rule to be inherited by any sub-spaces in Drafts. The second step allows us to define the conditions that are tested on the content before the action is performed.



In this example, we are going to select *All Items*, so that the action is performed on any content added to the space. We must make sure we click the *Set Values and Add* button to set any condition settings. Since there are no condition settings in this case, the condition is added to the list.

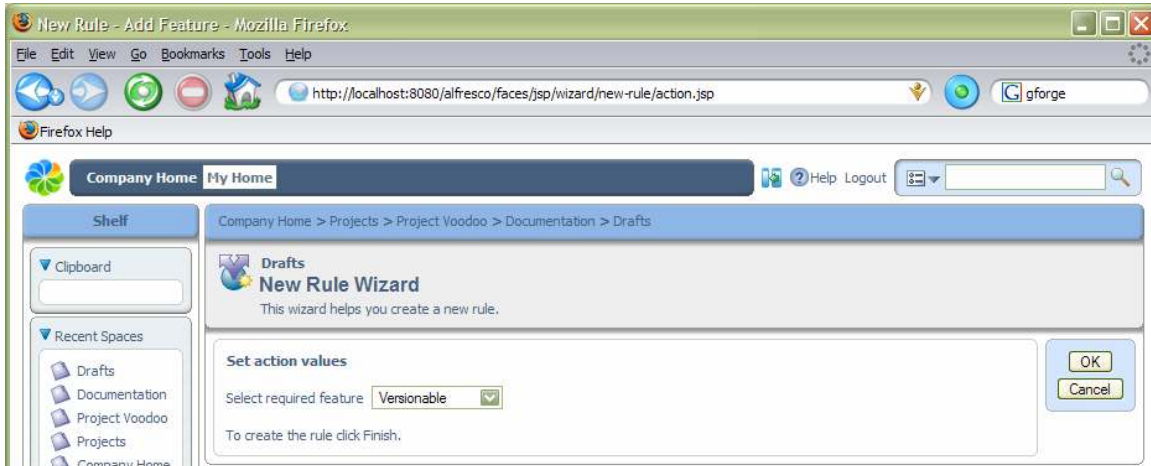


We have no additional conditions to add, so click *Next* to define the actions.

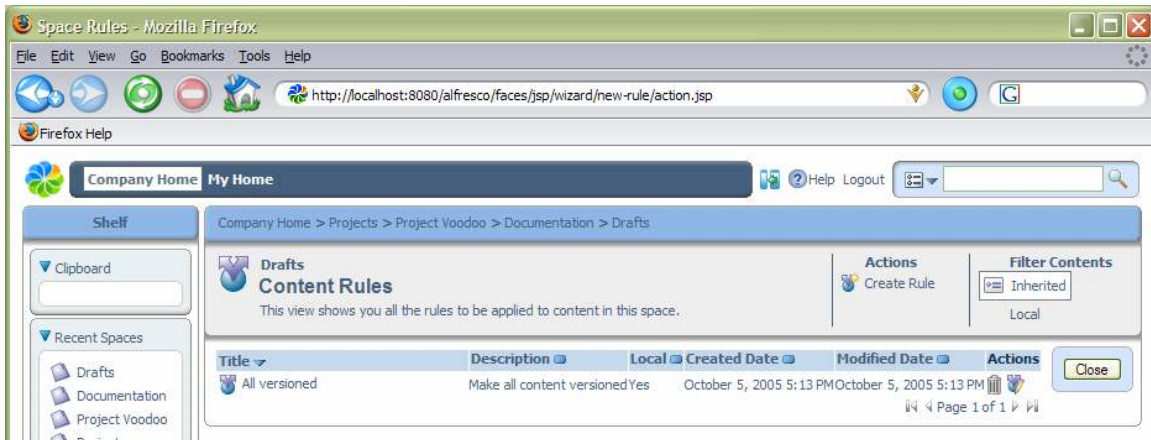


Adding Aspects

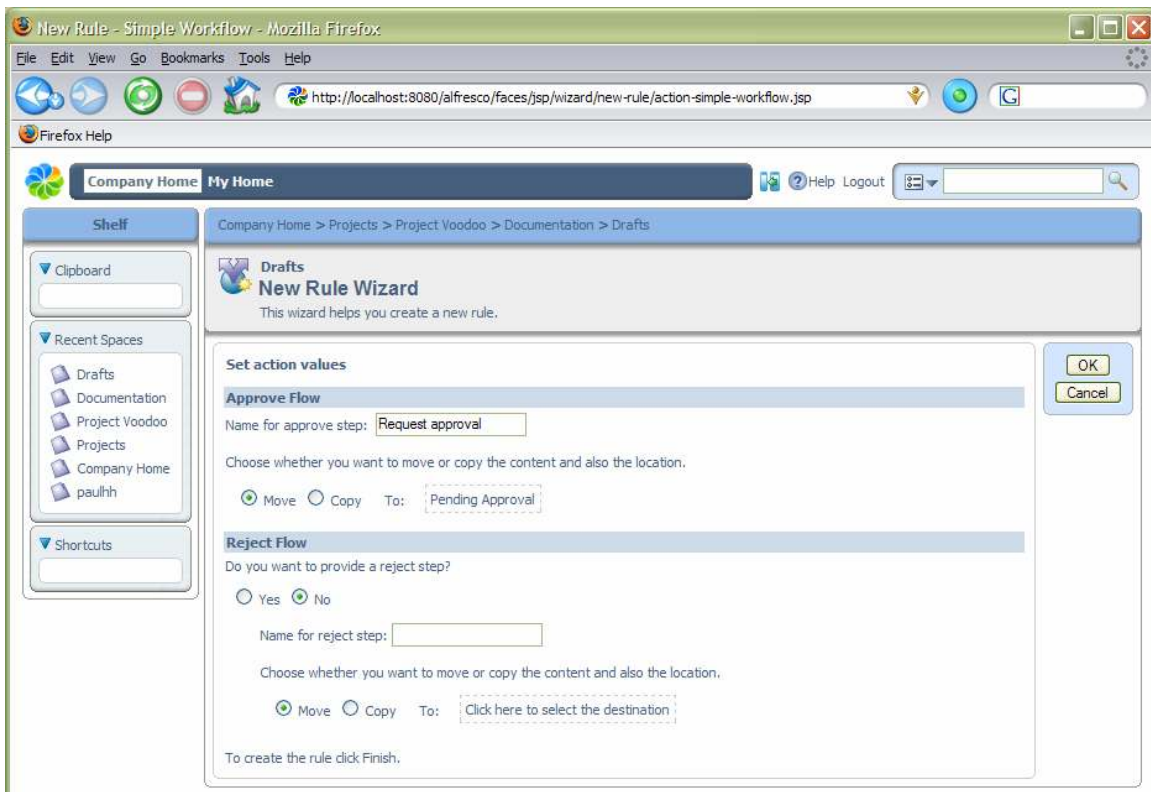
For the action we are going to select *Add aspect to item*, since we want to add the “versionable” aspect to all content. After clicking *Set Values and Add*, we give the relevant action settings, in this case choosing the actual aspect.



After clicking OK, we can now choose to finish the rule wizard, or go to a summary page to check the details of the rule before adding it.



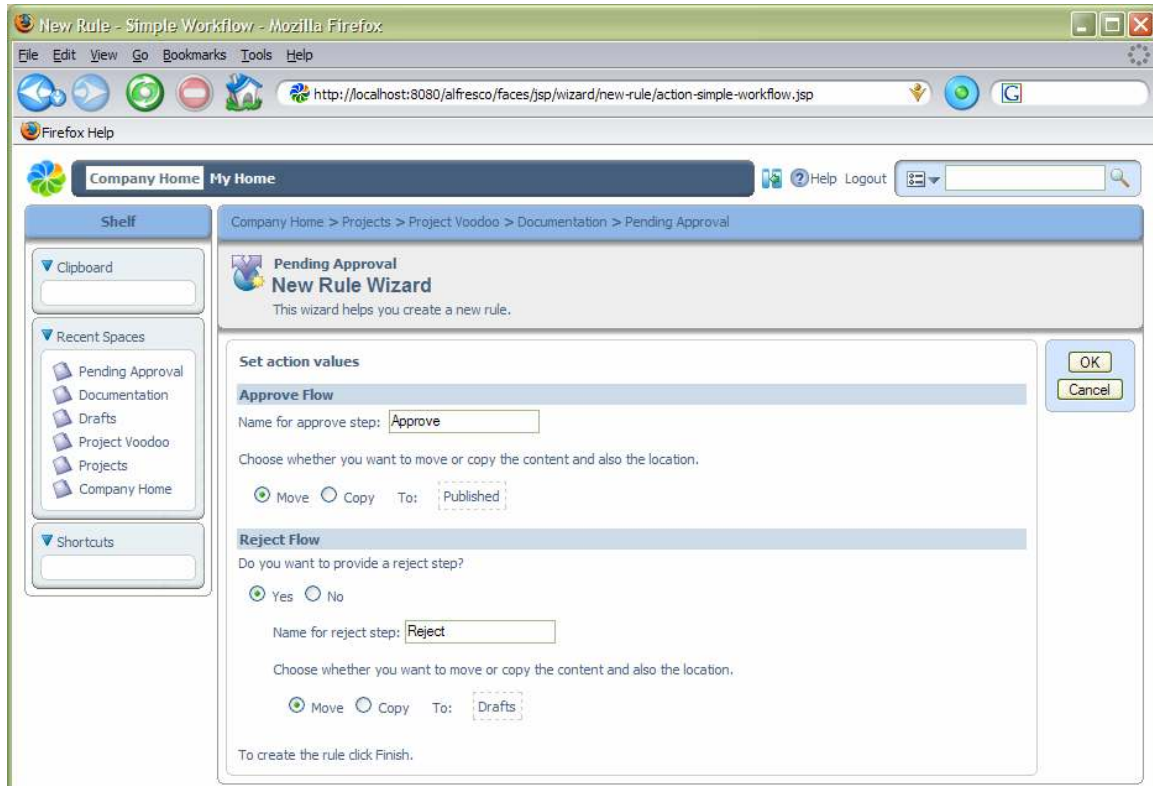
We also want to add a rule that applies a simple workflow to content in this space, so select *Create Rule* again. Going through the wizard, add an inbound rule with title 'All simple workflow', again with a condition of *All Items*. For the actions, select *Add simple workflow to item* and click *Set Values and Add* to fill in settings for the *Approve Flow*. For the name of the approve step, enter 'Request approval', leave the setting to the default of *Move* and then select the space where it should be moved – in this example, 'Pending Approval'. Finally, select *No* for providing a reject step and click *OK*.



You may click *Finish* at this point to complete the wizard. Now we have finished defining rules on the Draft space, we can navigate to the Pending Approval space to add the next step in the workflow. Click the *Close* button from the list of rules or select

Documentation from the location breadcrumb and navigate into Pending Approval. Again, select the *Manage content rules* action and define a simple workflow rule:

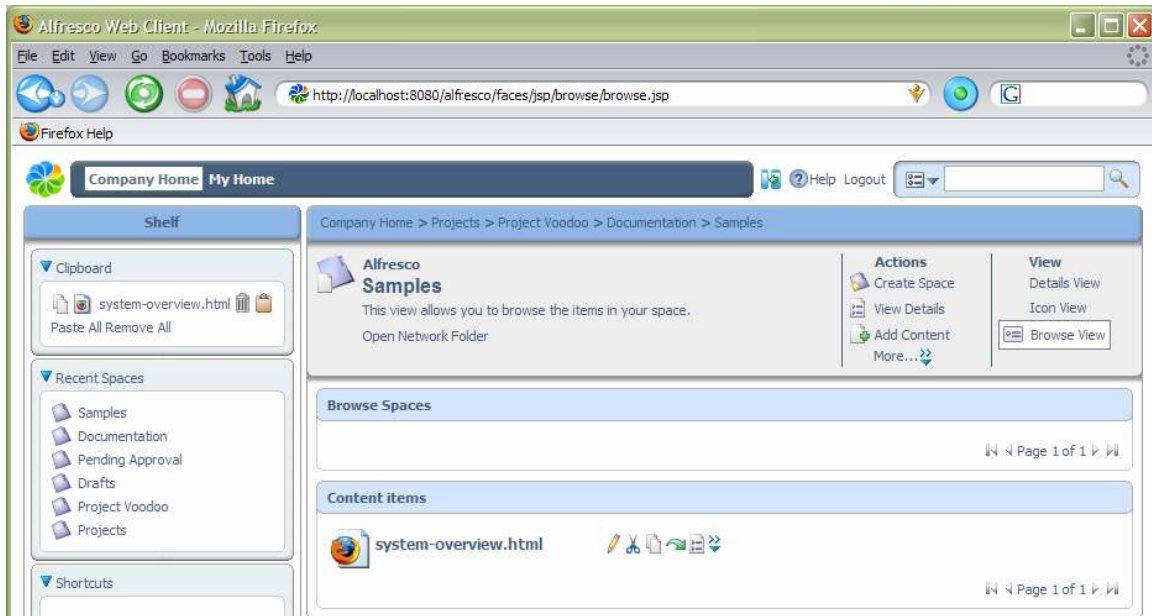
1. Select *Create Rule* and give it a title 'Add simple workflow';
2. Select *All items*
3. Select *Add simple workflow to item*
4. Add 'Publish' as the name for the approve step, leaving it as a *Move* and selecting the 'Published' space in Project Voodoo Documents
5. Say *Yes* to providing a reject step and enter 'Reject' as its name, again leaving it as a *Move* and then selecting the Draft space for it to be returned to.



We can then complete the rule. We do not need to add a rule to make all content versioned, since content should only normally be placed in here if it has been through the Drafts space, in which case it will be versioned already. To see these rules in action, we need to add some content.

Using the Clipboard

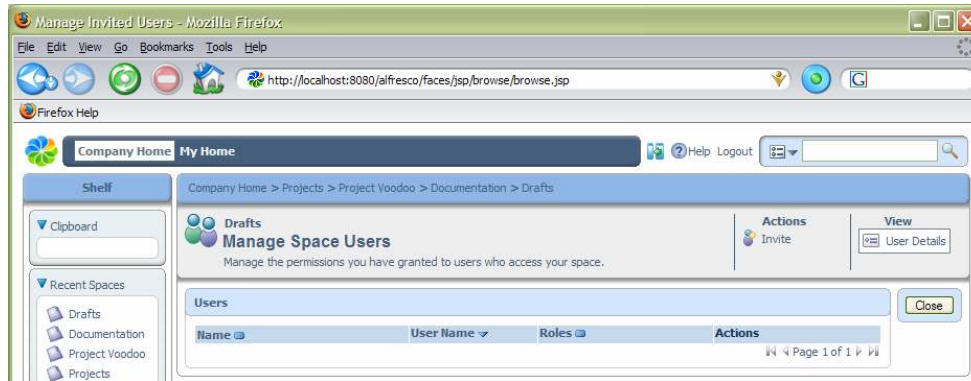
We have a sample software overview document that was created as part of the template we based our project space on, which can be found in the Samples space within Documents. Navigate to the Samples space and select the *Copy* action for 'system-overview.html' using the clipboard icon next to the scissors. This will place the item in the clipboard.



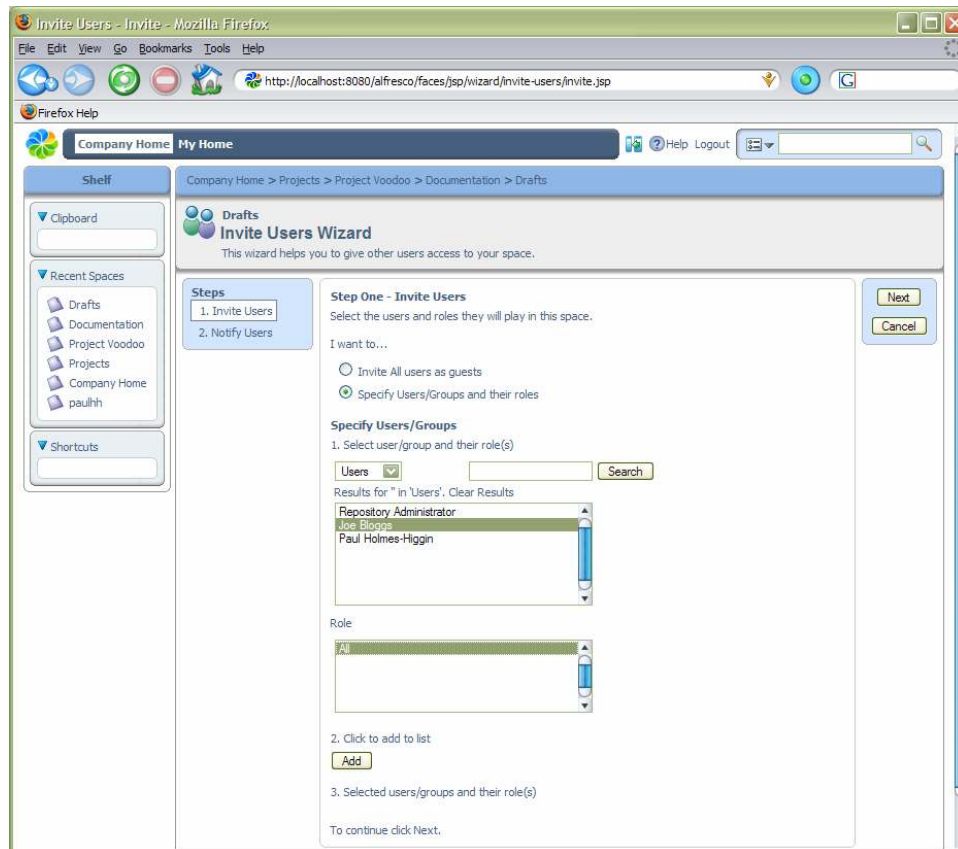
Now navigate back to the Drafts space and select the *Paste* action in the clipboard. This will create a new copy of the content. If we use the *Cut* action for content, a reference to it is placed in the clipboard and the content remains in its original place until we use the *Paste* action, when it is then moved to the new location. The clipboard contents are not retained over login sessions, so if you cut some content and then logout, the content will stay where it was originally.

Collaborating with Other Users

We want to work with other users on this project, so we are going to invite them to the Drafts space. From the More actions menu for the space, select the *Manage Space Users* option. This shows a list of users that have permission to work on content in the space.



Choose the *Invite* action to invite a user to the space. This opens a page to select the users and the role they can play in the space. Currently, the only role available is 'All'. To choose a person we need to search for them and then pick them from the list along with their role and click the *Add* button. As there are not many users in the system, we can just click the *Search* button without giving any text to match their name against.



2. Click to add to list

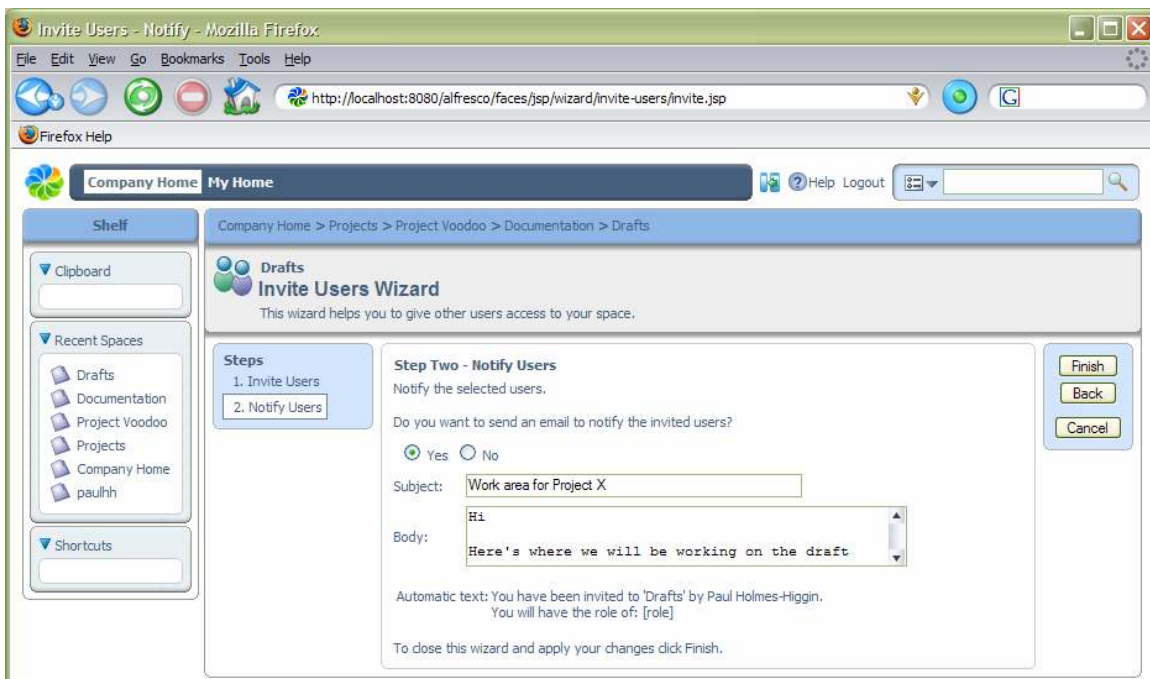
Add

3. Selected users/groups and their role(s)

Joe Bloggs (All) **Remove**

To continue click Next.

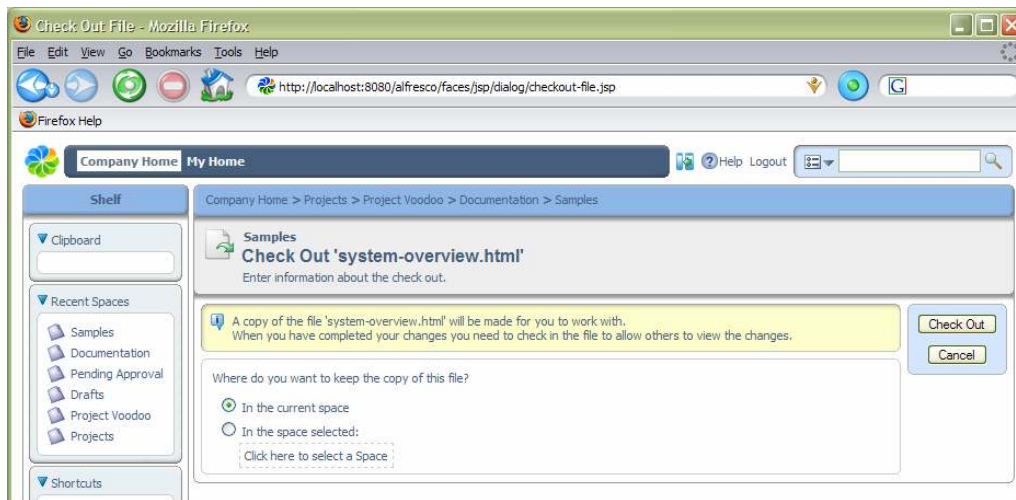
Choose the user 'Joe' and add them with the 'All' role. When we click on *Next*, we are given the option to send the invited users an email telling them about being invited. As we haven't configured email, just select the *No* option and finish.



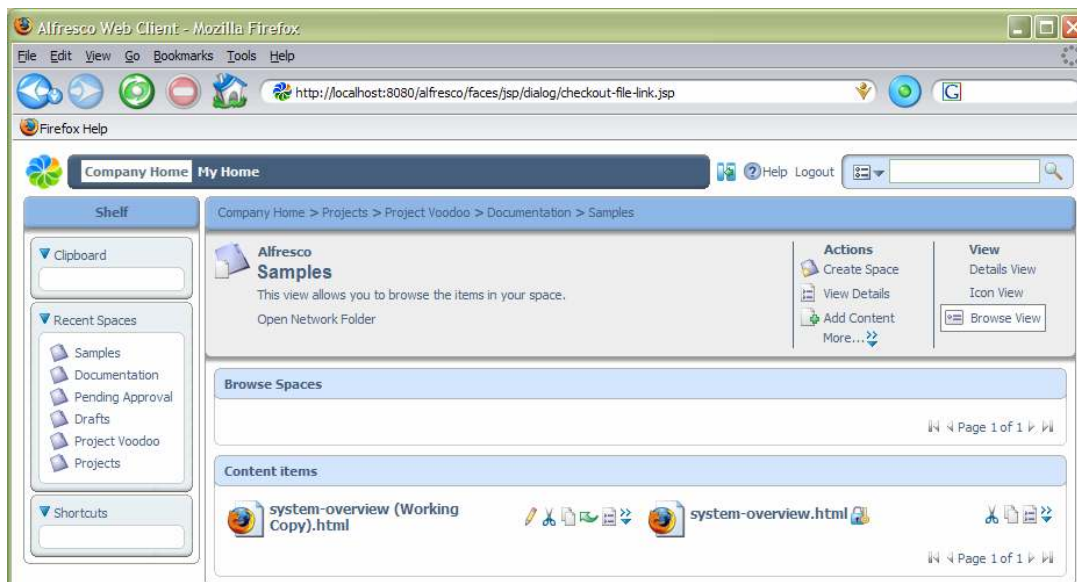
[In the Release Candidate the list of invited users is not shown]. Click the Close button to return to the Drafts space.

Checking Out Content

Since several people may collaborate to work on this content, we will do a “check out” of it to create a working copy, while locking the original. Select the *Check out* action for ‘system-overview.html’ – if you are not sure which icon does what action, hold your mouse over the icon and a tool tip should popup with its name. The check out action is a green downward arrow. This brings up dialog that gives us the choice of checking out the working copy to the same space as the original, or any other space. Some people like to work with one space that contains all their current work-in-progress, so may have created a specific folder in their home space for working copies. We are just going to keep the working copy in the current space.

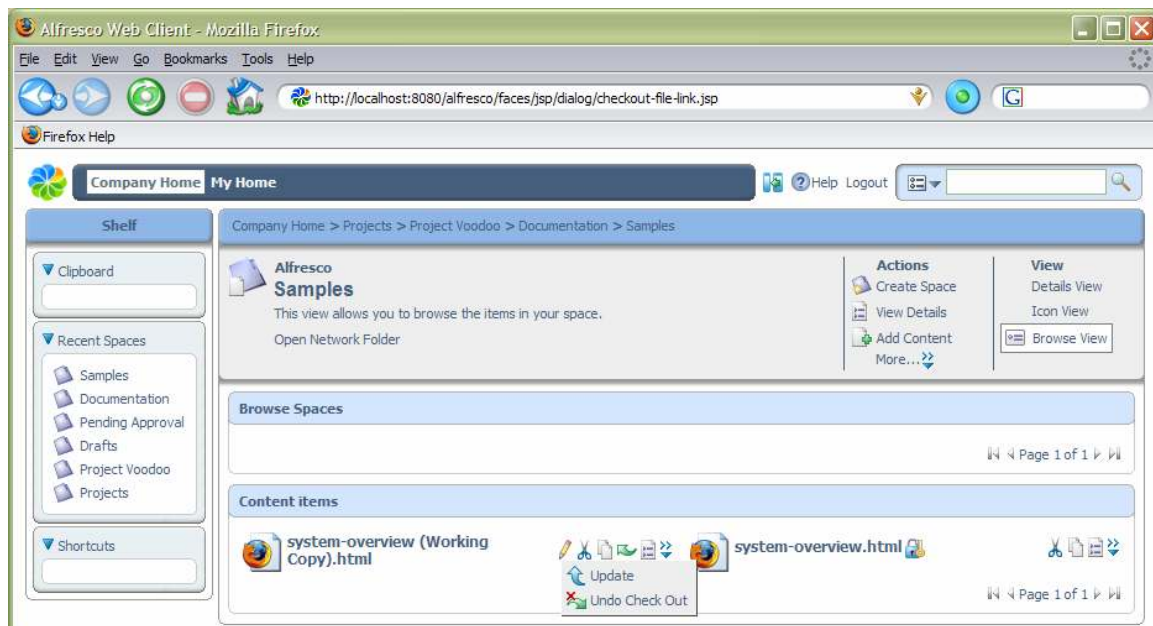


Clicking the *Check Out* button takes us to a page where we can choose to download the content for editing in some other program. Clicking *OK* takes us back to a view of the space, now containing 2 items.

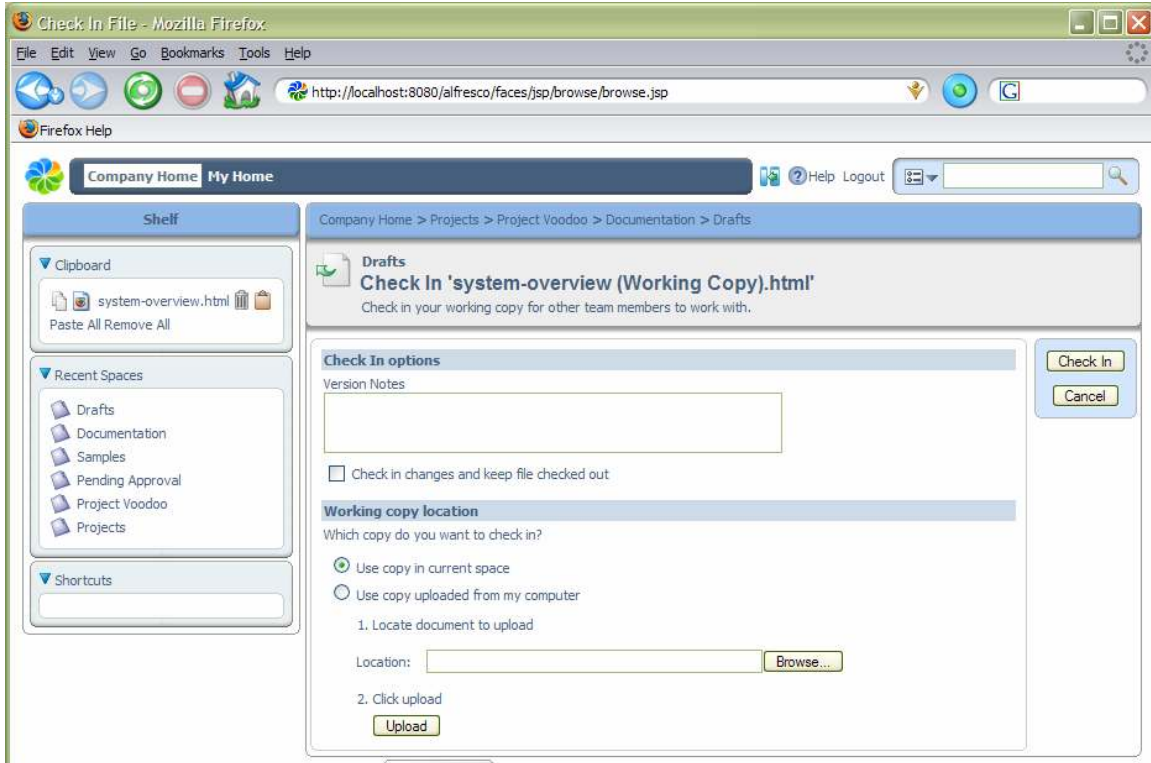


Checking In Content

The lock icon against the original lets us know that we cannot change it. The only way we can modify it is to undo the check out on the working copy, or to “check in” the working copy. If there is a key on the lock it means we are able to check in or cancel the check out. We can see who has checked out the content by hovering the mouse over the lock. First we are going to edit the document and add some minor changes to the text. Once saved, we can now check in the content. Often, content will stay checked out for several days while someone makes their changes to it. It is possible to take a copy of the content onto the desktop and work with it off-line. If we do this, we can always upload any alterations to the working copy using the *Update* action (from the popup menu) without the need to check in.



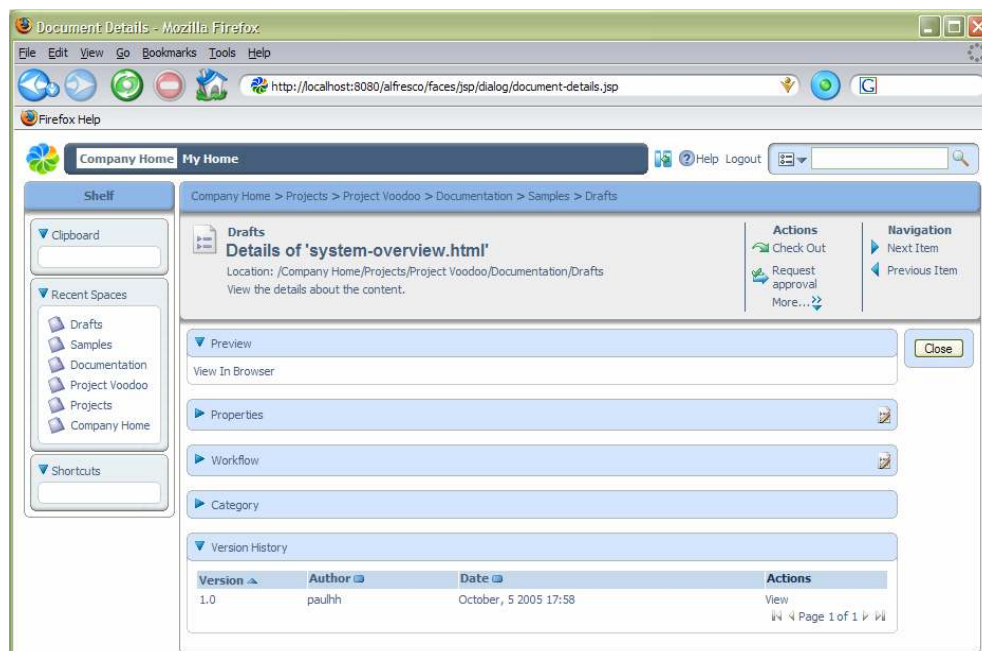
Selecting the *Check In* action will overwrite the original with the updated working copy, making it available for people to edit it again. Make some changes by editing the content (pencil icon) and check in the content. If we had a more up-to-date copy of the content on our desktop, we could choose to upload it at this point and check it in. In this case we are just going to use the copy that is currently in the space, so just click the *Check In* button.



As the content is versioned, then the original content is still available to view from its version history. Select *View Details* for 'system-overview.html'.

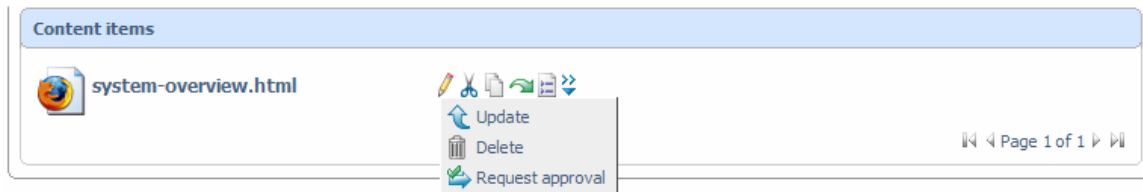
Version History

We can expand and contract the version history block by clicking the triangle alongside *Version History*. The current version is not listed in the history.



Sending Content for Review

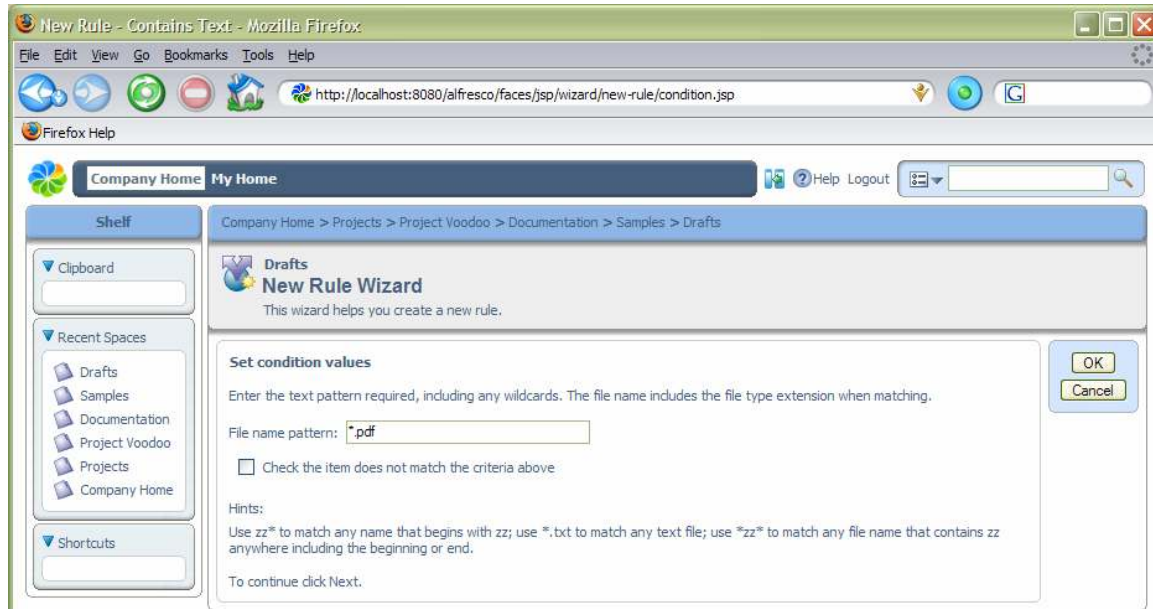
Now that we are happy with our content, we can send it for review. Any workflow steps that are available for an item of content are shown in its actions, either from the popup actions available in the space view, or from the actions on the item's details view. In this example, the only available workflow step is *Request Approval*. Selecting this action will move the content to the Pending Approval space, so it no longer shows in the Drafts space.



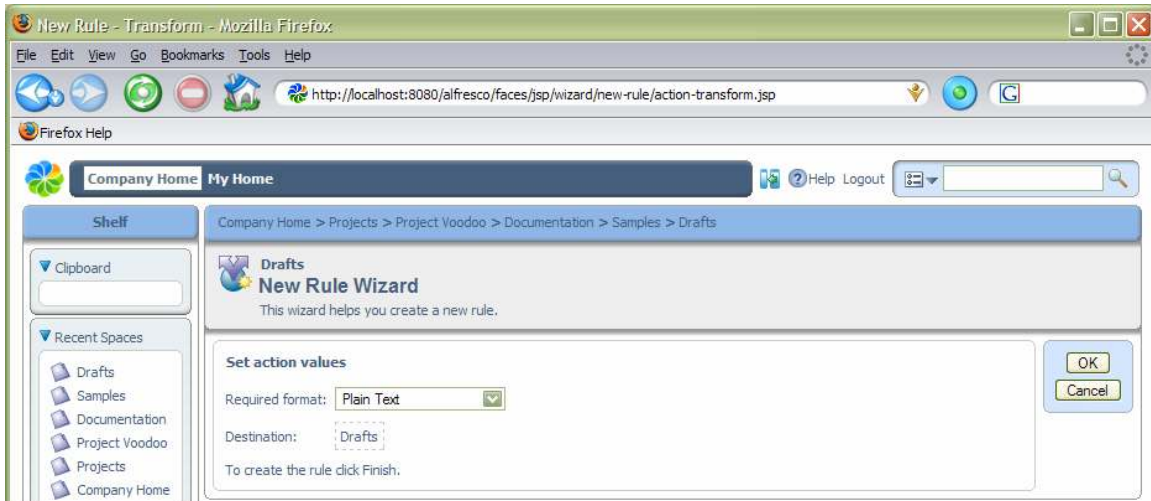
We can define a rule for all content with an action that will allow email alerts to be sent to people, which can be used in this case to let the appropriate person know that there is some content waiting to be approved. If we navigate to the Pending Approval space, we can see the 'system-overview.html' content. This time, if we look at the workflow steps available we see *Publish* and *Reject*, because the rule for this space added these steps when the content was moved here. Selecting the *Publish* action moves the content on to the Published space, whereas selecting the *Reject* action will send it back to the Drafts space.

Uploading and Transforming Content

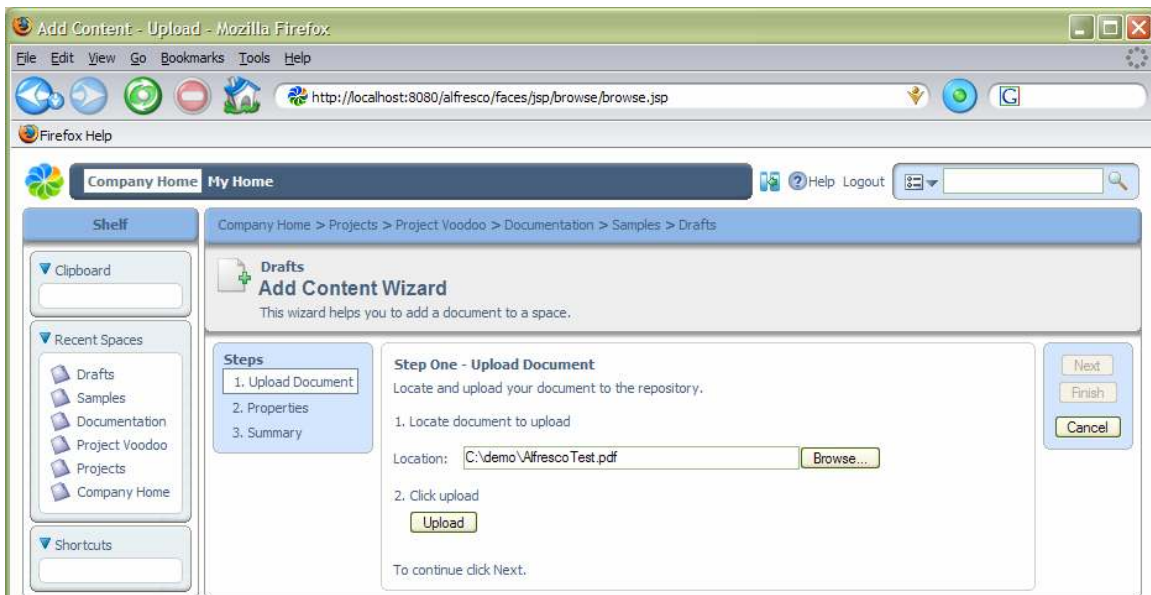
In this next example, we are going to define a transformation rule that will convert content added to a space into a different format. The scenario is that we need to re-use marketing content, which is available in PDF, within some of our software documents, so getting the basic text of the marketing content is very helpful. Navigate back to the Drafts space in Project Voodoo and select the *Manage Content Rules* action. Create a new rule named 'Transform PDFs' and select *Items which contain a specific value in its name* as the condition. For the condition setting, enter a pattern of '*.pdf'.



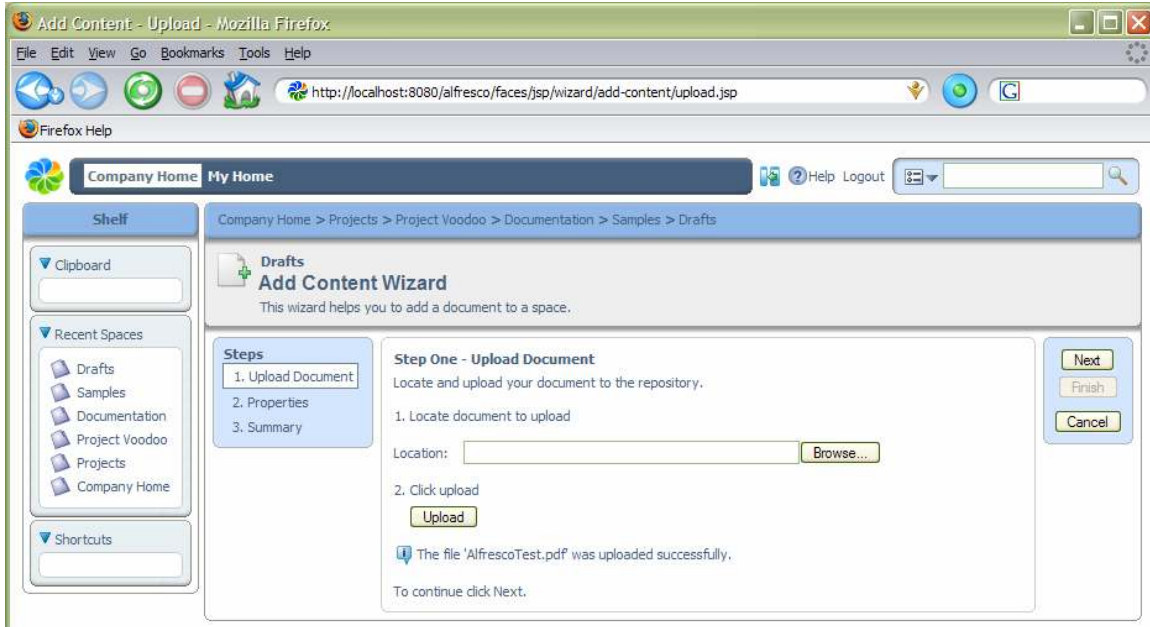
On the action step, choose *Transform and copy content to a specific location* and for the action settings, select *Plain Text*. By default this is the only option unless you have OpenOffice installed (www.openoffice.org), which enables a wide range of transformations to be configured for use. Next select the destination space for the transformed content, in this case we will keep it in the Drafts space.



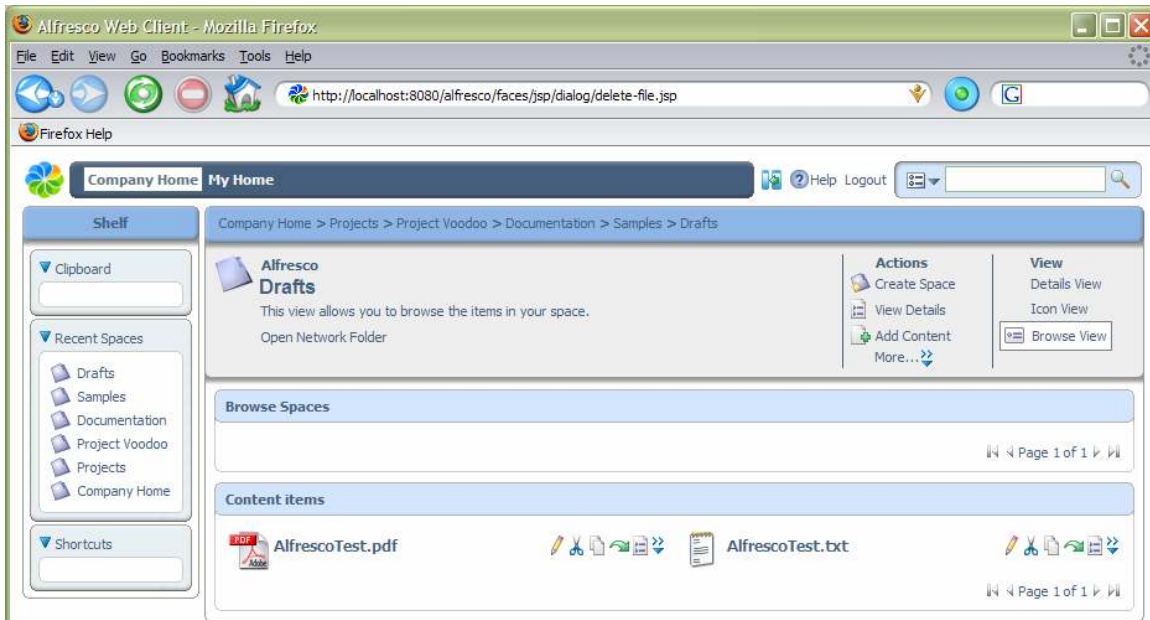
Finish the rule and we will return to the Drafts space. Now we can upload a file to exercise the rule. Select the *Add Content* action within Drafts and browse to a PDF file – a sample file is available in the Alfresco installation folder.



Select the *Upload* button and wait while the file is uploaded to the Alfresco server. A message will appear confirming the upload and then we can click the *Next* button.



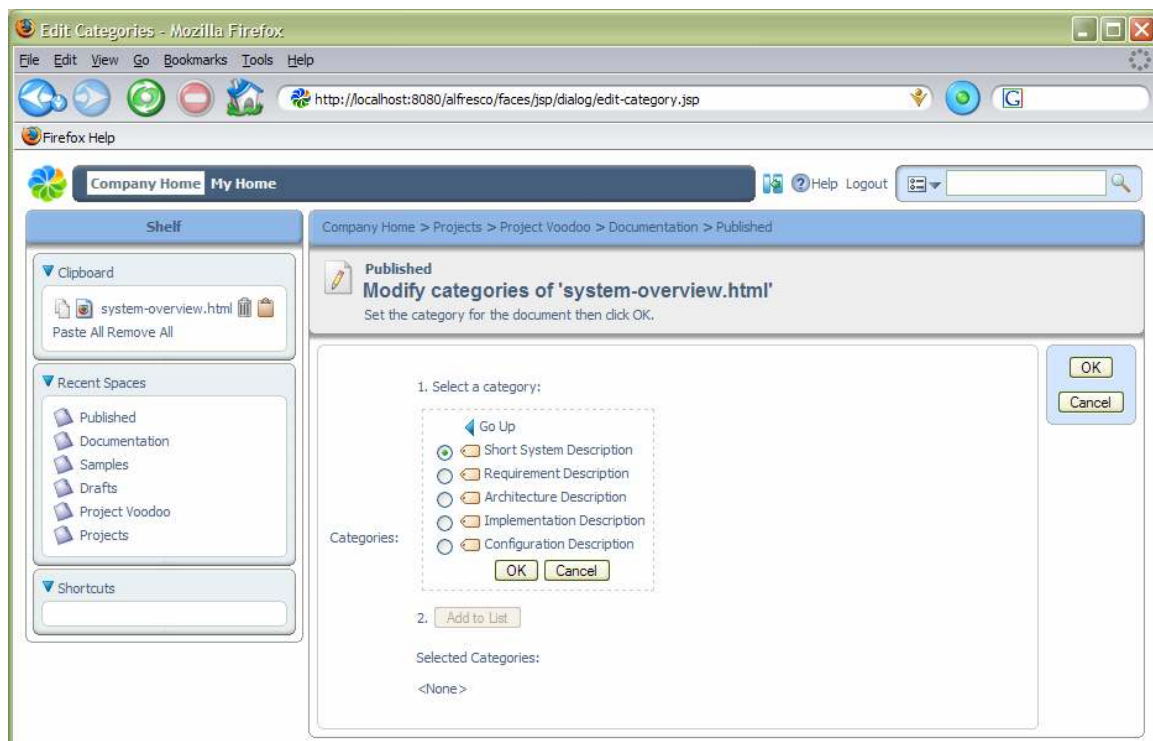
We will get taken to the next step in the wizard, which has the same options as we completed for creating the content within the browser earlier. On finishing the wizard, we will be returned to the Drafts space, but there will be two new documents: the PDF and the text version of it.



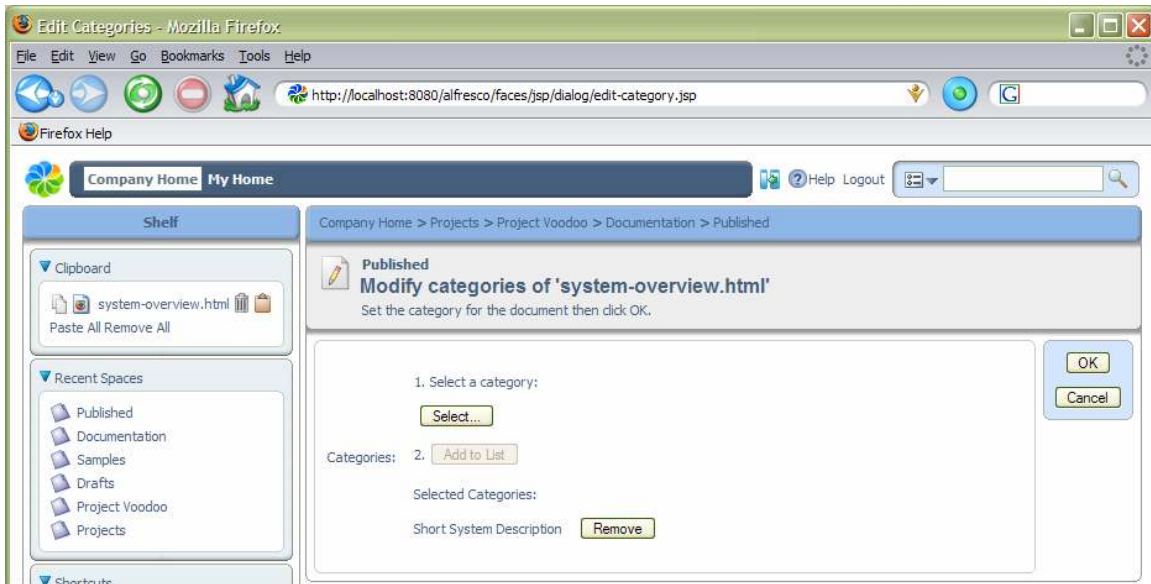
Categories and Advanced Search

One of the other features of Alfresco is the ability to assign categories to items. This allows information to be classified in any number of different ways. With this, we can retrieve items that match combinations of constraints, including categories. The smart thing that categories provide is that they are aware that they are hierarchical, so searching for an item in a higher-level category will also find anything classified below it. In the following example, we are going to add some content to a category and then search for it.

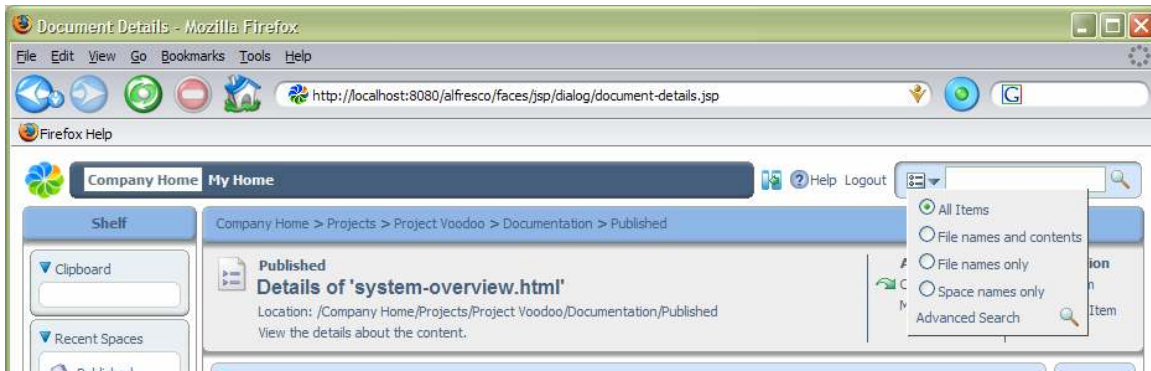
The first step is to make the content able to be categorized, which can be done through the content's properties page. Navigate to the Published space and select the *View Details* action for 'system-overview.html' (one of the icons next to the content, not the space details). If we expand the *Category* block and if the item is not categorized, we can select the *Allow Categorization* action. Now we can choose the *Change Category* icon in the right-hand corner of the block, which opens a view to allow a category to be selected. Select through 'Software Document Classification', 'Software Descriptions', 'Main Software Descriptions' and select 'Short System Description'.



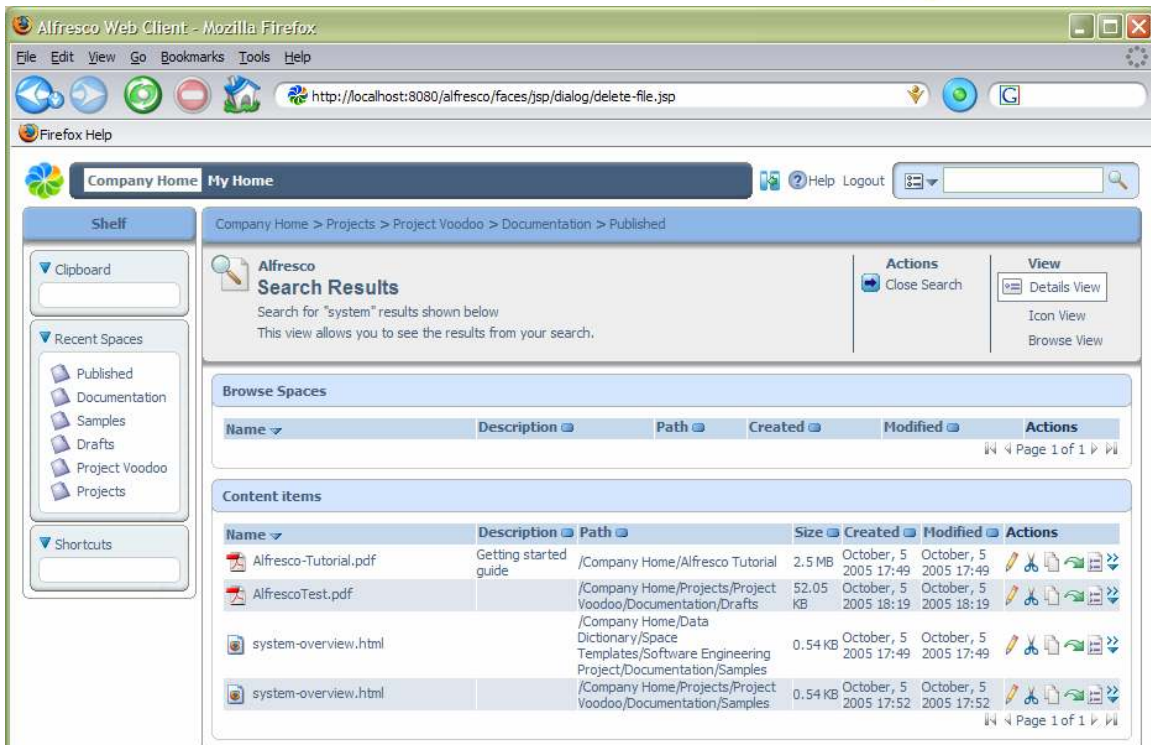
As we can put this content in any number of categories, we need to click 'Add to List' even though we are only going to set one category.



We can now use the advanced search to try and find this content. The advanced search page is opened from the popup menu in the toolbar search. When we enter text in the toolbar search, it will search throughout all available spaces, although we can constrain it to just find the text in names or also the content. Select the *Advanced Search* option.



From this page there are a number of options available, beyond what text to search for. It is possible to specify the starting space for the search, so that only content beneath that space is searched. In this example, we will look for the text 'system' - clicking the *Search* button will start the search. We will get a list of all content that has 'system' in its name, or somewhere in its content. The *Details View* is usually the best for viewing search results. Also, if we view an item's details, we can navigate through the results using the Next Item and Previous Item navigation actions.



Alfresco Web Client - Mozilla Firefox

http://localhost:8080/alfresco/faces/jsp/dialog/delete-file.jsp

Company Home My Home

Shelf

- Clipboard
- Recent Spaces
 - Published
 - Documentation
 - Samples
 - Drafts
 - Project Voodoo
 - Projects
- Shortcuts

Company Home > Projects > Project Voodoo > Documentation > Published

Alfresco Search Results

Search for "system" results shown below
This view allows you to see the results from your search.

Actions: Close Search

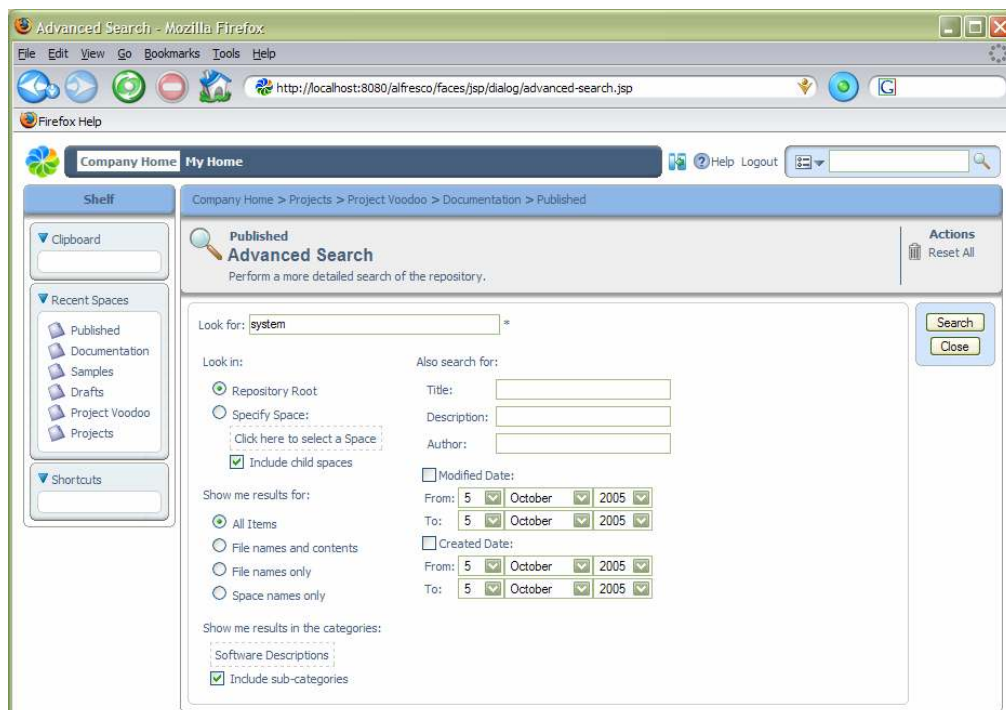
View: Details View, Icon View, Browse View

Browse Spaces

Name	Description	Path	Created	Modified	Actions
Alfresco-Tutorial.pdf	Getting started guide	/Company Home/Alfresco Tutorial	2.5 MB	October, 5 2005 17:49	October, 5 2005 17:49
AlfrescoTest.pdf		/Company Home/Projects/Project Voodoo/Documentation/Drafts	52.05 KB	October, 5 2005 18:19	October, 5 2005 18:19
system-overview.html		/Company Home/Data Dictionary/Space Templates/Software Engineering Project/Documentation/Samples	0.54 KB	October, 5 2005 17:49	October, 5 2005 17:49
system-overview.html		/Company Home/Projects/Project Voodoo/Documentation/Samples	0.54 KB	October, 5 2005 17:52	October, 5 2005 17:52

Page 1 of 1

We can also choose a category in which the content must be in to be found. Run the search again, but set it to look only for content in the 'Software Descriptions' category. For this example, we only have one document that matches this, because 'Short System Description' is within the 'Software Descriptions' category. If we were to choose a different category, such as 'Development Plans', then no content would be found.



Advanced Search - Mozilla Firefox

http://localhost:8080/alfresco/faces/jsp/dialog/advanced-search.jsp

Company Home My Home

Shelf

- Clipboard
- Recent Spaces
 - Published
 - Documentation
 - Samples
 - Drafts
 - Project Voodoo
 - Projects
- Shortcuts

Company Home > Projects > Project Voodoo > Documentation > Published

Published Advanced Search

Perform a more detailed search of the repository.

Look for:

Look in:

- ☒ Repository Root
- ☐ Specify Space:

☒ Include child spaces

Also search for:

Title:

Description:

Author:

☐ Modified Date:

From:

To:

☐ Created Date:

From:

To:

Show me results for:

- ☒ All Items
- ☐ File names and contents
- ☐ File names only
- ☐ Space names only

Show me results in the categories:

-
- ☒ Include sub-categories

Search Close

Summary

We have meandered around much of the Alfresco Preview Release, with a view to giving you some ideas about the approaches Alfresco is taking to managing content. The functionality of the system will be expanded considerably over the following months, providing role-based permissions, more collaborative capabilities and micro-site management.