

Alfresco – A Fresh Approach to Content Management

Tutorial

Overview.....	2
Starting with Alfresco.....	3
Adding New Users.....	5
Home Spaces.....	7
Creating Content.....	9
In-line Content Editing.....	9
Managing Properties and Meta-Data.....	11
Spaces.....	12
Working with Space Templates.....	12
Smart Spaces.....	14
Adding Rules.....	15
Adding Aspects.....	17
Using the Clipboard.....	19
Collaborating with Other Users.....	21
Checking Out Content.....	23
Checking In Content.....	24
Version History.....	25
Sending Content for Review.....	27
Uploading and Transforming Content.....	28
Categories and Advanced Search.....	31
Forums and Discussions.....	35
Summary.....	38

Overview

This document provides an overview tutorial of the Alfresco™ Open Source Content Management System to accompany the download of the system available at: <http://www.alfresco.org/download.html>. You can also access an on-line demo by going to: <http://www.alfresco.org/flash/alfrescov9d.html>.

In this tutorial we will go through the process of starting to work with Alfresco, right from the point after it is installed and running. We will walk through the process of logging in, adding a new user, and creating and managing content. We will also introduce the concept of a Smart Space, which is a collaborative space that uses rules to simplify the handling, management and transformation of content. We will also show how to use additional properties and categories to organize and find content.

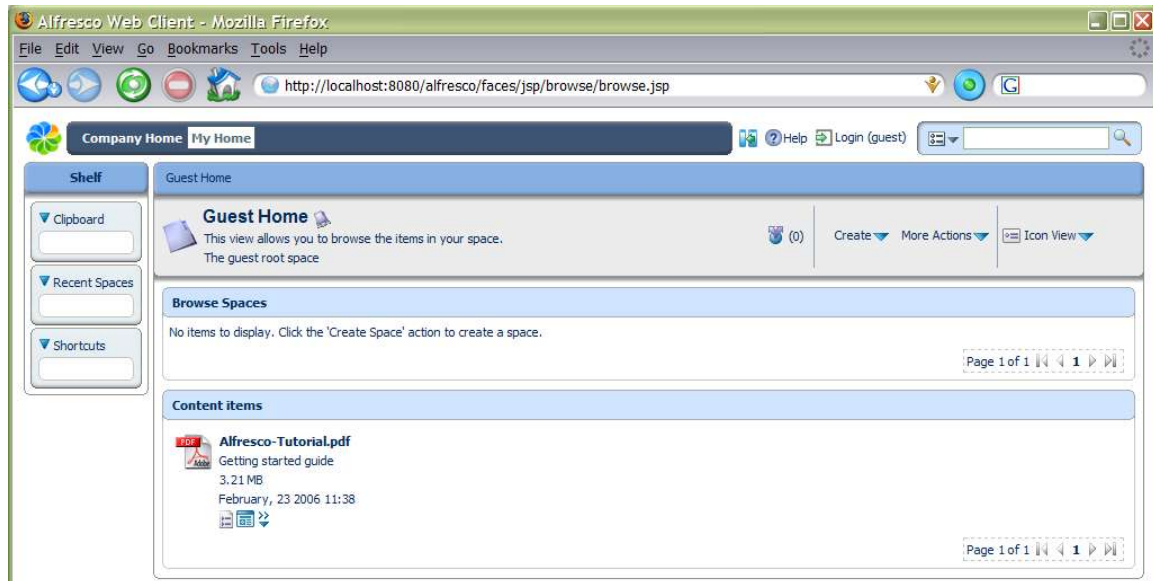
Before starting, make sure that your system has been installed properly. The installation is fast and easy for either Microsoft Windows® or Linux. You can also choose to install it with JBoss® Portal 2.2 or Apache Tomcat. If you have any issues in the installation, you can find help in the Alfresco Forums at: <http://www.alfresco.org/forums/>

To begin, if Alfresco was installed from the Tomcat bundle, start the web client from: <http://localhost:8080/alfresco>

If Alfresco was installed from the JBoss bundle, you may use the same URL as for Tomcat, or start the web client in the portal from: <http://localhost:8080/portal> and navigate to 'web-client' from the Page Menu and then maximize the portlet (top-right-most icon).

Starting with Alfresco

When you open your browser to Alfresco the very first time, you are taken to the *Guest Home*. This space can be used to hold any content that you would like to be available to anyone who has access to your Alfresco server.



First, a bit of orientation. There are 3 main areas in the Alfresco user interface: a toolbar along the top; the Shelf; and the main working area.

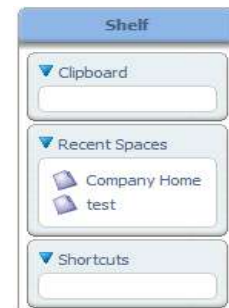
Toolbar



The toolbar contains two main navigation buttons that take us to the *Company Home* or your *Home Space*, as well as search and help capabilities. We can also hide and show the Shelf using the icon to the left of the help.

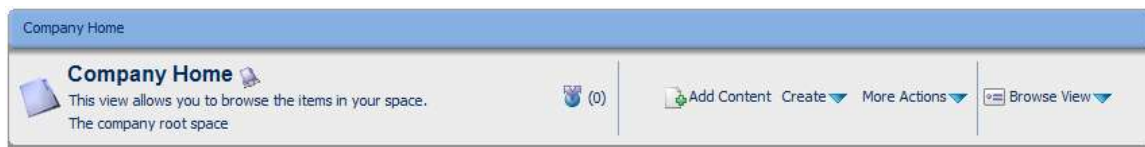
Shelf

The Shelf contains a number of different features to help work with content, such as the Clipboard and Shortcuts. The Recent Spaces provides an easy way to go back to a Space we have recently viewed.

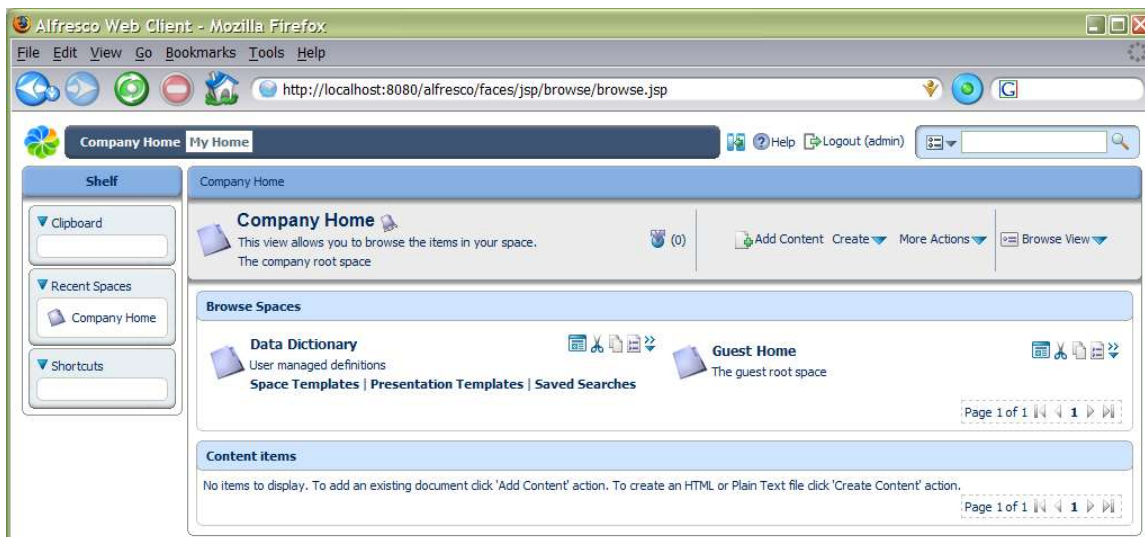


Working Area

The working area will change depending on what information we are looking at or what task we are performing. The top of the working area will always have a navigation breadcrumb that allows us to jump to any part of the breadcrumb path. For information views we will usually have a summary area along with actions or alternative views. The details and options will change depending on what we are looking at and doing, as well as who we are.



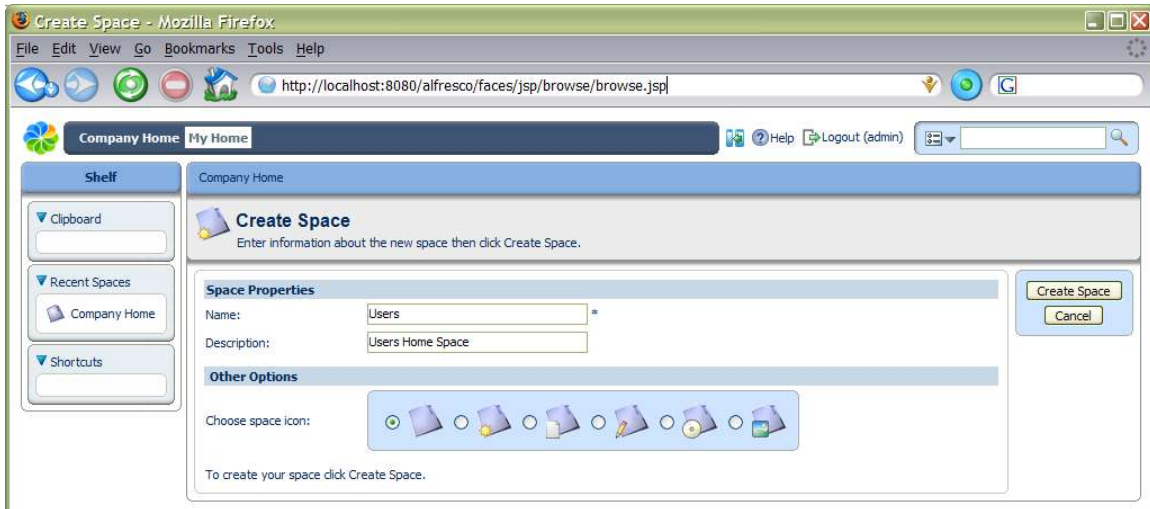
If you want to add and create content, then you will need to login. Click the 'Login' link. When Alfresco is installed, it creates an administration user called 'admin' with a default password of 'admin'. So, let's login and we'll be taken to the *Company Home* as shown in the screen below.



When we have finished using Alfresco, we can just close the browser window without logging out. The next time you go to Alfresco, you will automatically go straight to the login page. If you click 'Logout' in the toolbar and then close the browser window, you will be taken to the Guest Home the next time you access Alfresco.

Adding New Users

Before we add some new users and define their own personal working spaces, we need to decide how we are going to organise our repository and where user home spaces live. For this tutorial we are going to put the user homes all in the same location, so we need to make a space to contain them all. We are going to create a space named 'Users' in the 'Company Home', so, since we are in the right place, we just need to select *Create Space* from the *Create* menu and we will be taken to the Create Space dialog.



Company Home My Home

Shelf

- Clipboard
- Recent Spaces
- Company Home
- Shortcuts

Company Home

Create Space

Enter information about the new space then click Create Space.

Space Properties

Name: Users *

Description: Users Home Space

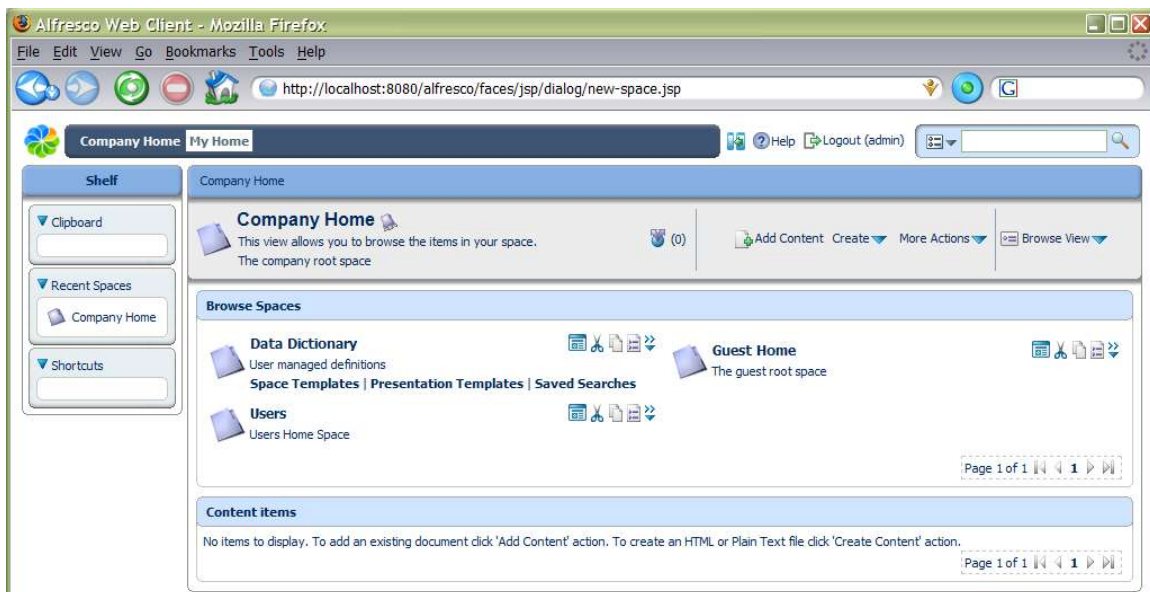
Other Options

Choose space icon:

To create your space click Create Space.

Create Space Cancel

Now fill in 'Users' for the *Name* with any descriptive text in *Description*, and choose an icon to use for the space, then click *Create Space*. We have now created a space.



Alfresco Web Client - Mozilla Firefox

Company Home My Home

Shelf

- Clipboard
- Recent Spaces
- Company Home
- Shortcuts

Company Home

This view allows you to browse the items in your space. (0)

Add Content Create More Actions Browse View

Browse Spaces

- Data Dictionary: User managed definitions
- Guest Home: The guest root space
- Users: Users Home Space

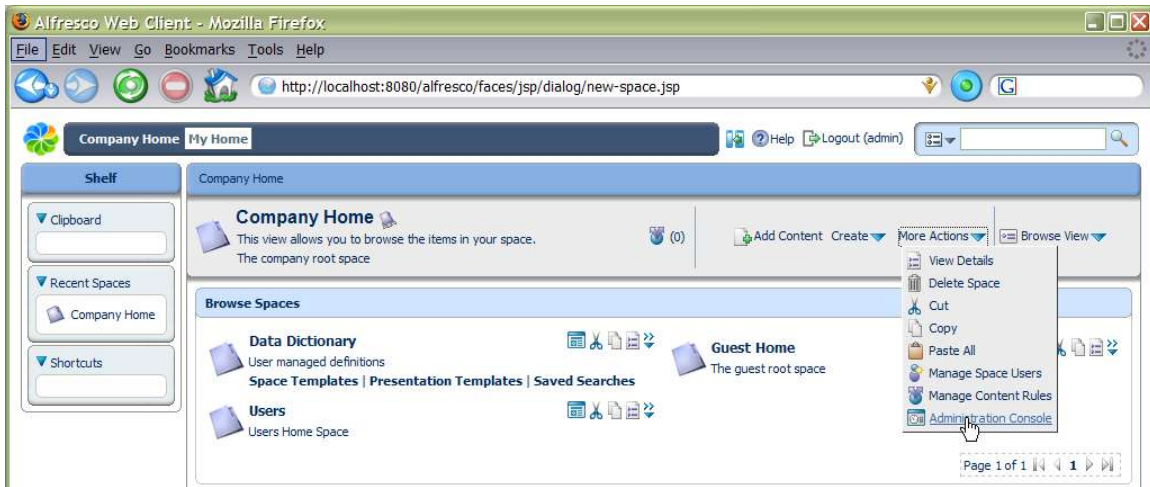
Page 1 of 1

Content items

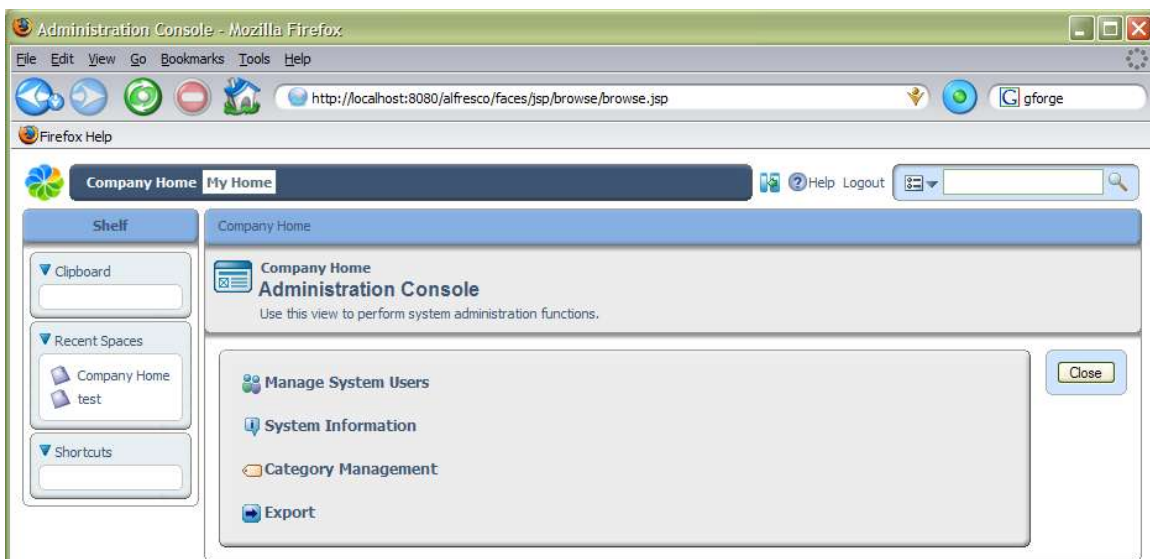
No items to display. To add an existing document click 'Add Content' action. To create an HTML or Plain Text file click 'Create Content' action.

Page 1 of 1

While we are here, create another space named 'Projects' that we will come back to later. Next we want to add a new user. As we are logged in as an administrator, there is an action under the *More Actions* link called *Administrative Console* that we need to use.



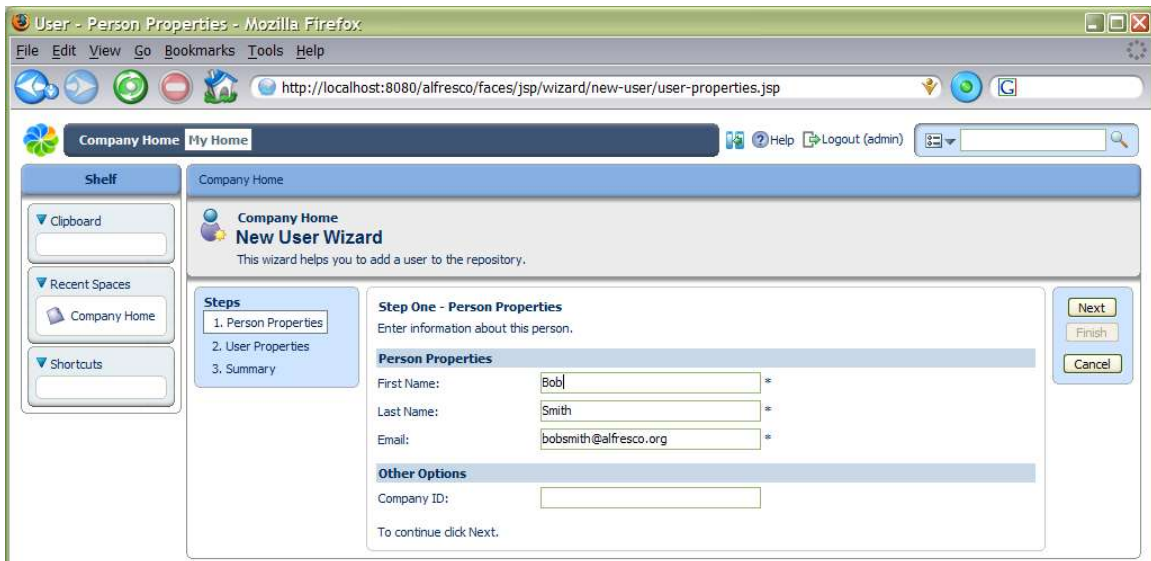
This opens the Administration Console that has a number of options available.



The one we are interested in is *Manage System Users*. Click on this and we will be presented with the dialog, click the *Show All* button to list the current users, including the pre-configured 'admin' account. We need to select the *Create User* action, which will take us to the new user wizard.

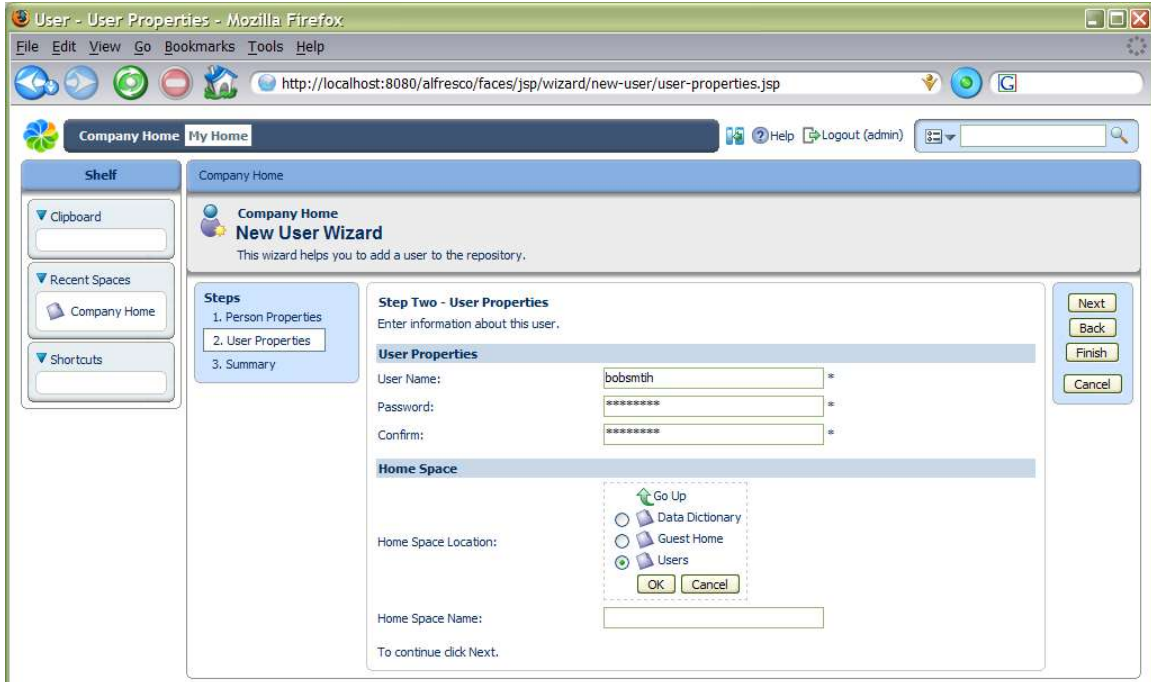


The new user wizard prompts us for details of the person's name and email in the first step.



Home Spaces

In the second step we give the username details, as well as the location for where their home space should be created. To use the space selector, navigate the links to move up and down the space hierarchy, selecting the required space's radio button, then click *OK*. For our example, we are going to put the new home space in the 'Users' space we created earlier.



User - User Properties - Mozilla Firefox
 http://localhost:8080/alfresco/faces/jsp/wizard/new-user/user-properties.jsp

Company Home My Home Help Logout (admin)

Shelf
 Clipboard
 Recent Spaces
 Company Home
 Shortcuts

Company Home
New User Wizard
 This wizard helps you to add a user to the repository.

Steps
 1. Person Properties
 2. User Properties
 3. Summary

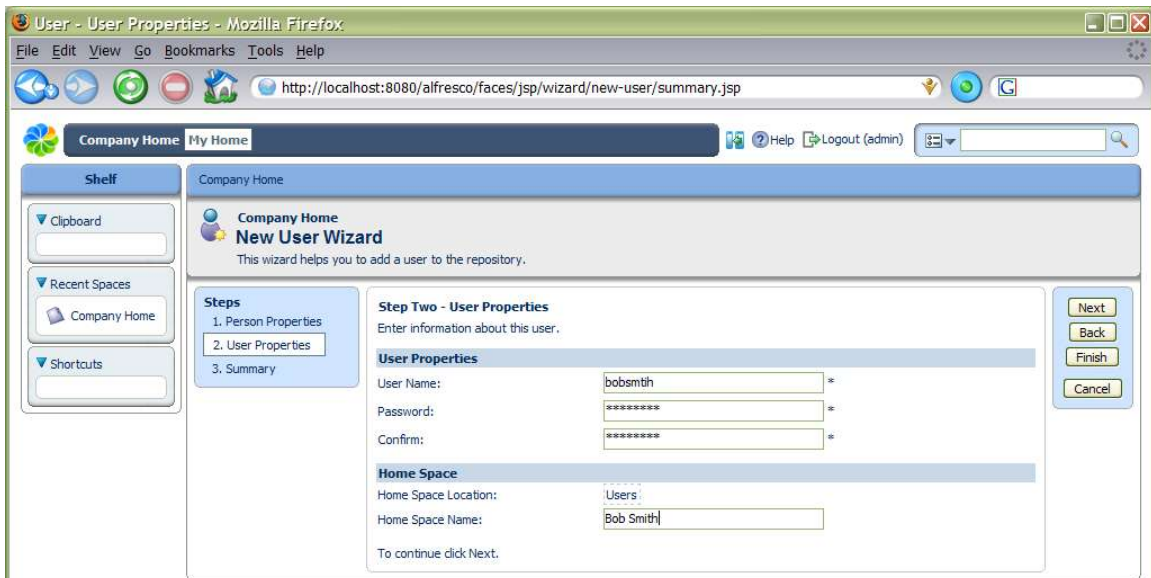
Step Two - User Properties
 Enter information about this user.

User Properties
 User Name: bobsmith *
 Password: ***** *
 Confirm: ***** *

Home Space
 Home Space Location:
 Go Up
 Data Dictionary
 Guest Home
 Users
 OK Cancel
 Home Space Name:
 To continue click Next.

Next
 Back
 Finish
 Cancel

Then give the name for their home space: here we are using 'bobsmith'.



User - User Properties - Mozilla Firefox
 http://localhost:8080/alfresco/faces/jsp/wizard/new-user/summary.jsp

Company Home My Home Help Logout (admin)

Shelf
 Clipboard
 Recent Spaces
 Company Home
 Shortcuts

Company Home
New User Wizard
 This wizard helps you to add a user to the repository.

Steps
 1. Person Properties
 2. User Properties
 3. Summary

Step Two - User Properties
 Enter information about this user.

User Properties
 User Name: bobsmith *
 Password: ***** *
 Confirm: ***** *

Home Space
 Home Space Location: Users
 Home Space Name: Bob Smith
 To continue click Next.

Next
 Back
 Finish
 Cancel

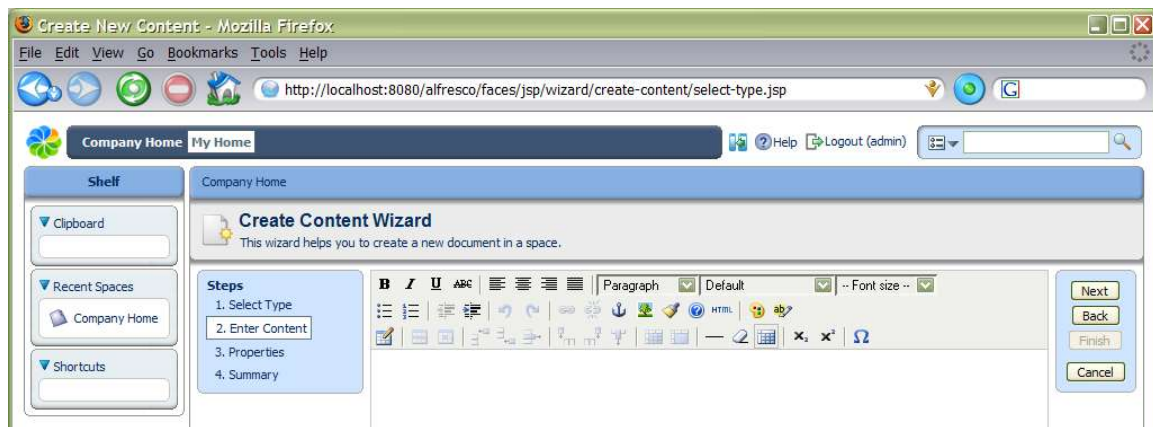
We can select *Finish* now, or go to the next step to see a summary of the details we have entered and then finish. This will create the new user and their home space and return us to the list of users. While we are here, you should create another user for use later on named 'Joe Blogs'.

Creating Content

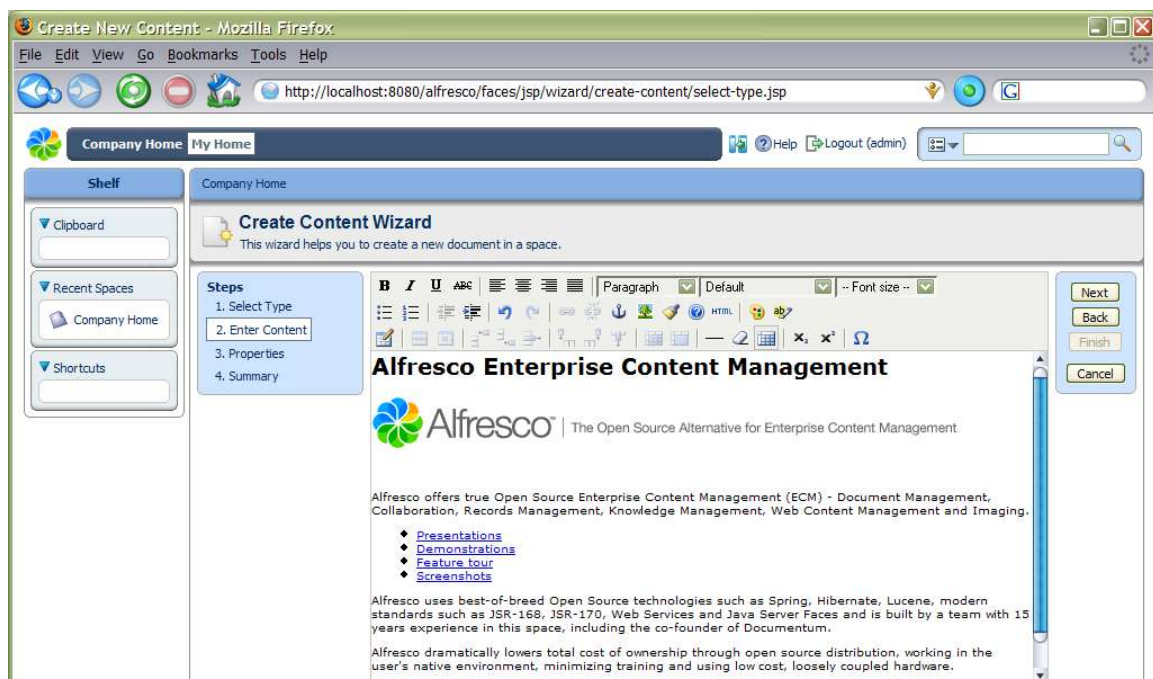
We can now login as the newly created user: click *Logout* from the toolbar and then login using the details for the new user. This time, the user is taken to their Home Space, but they can still easily navigate to the Company Space and elsewhere. All the options to create sub-spaces and add content are available. The first thing we are going to do is see how we can create web content directly in the browser.

In-line Content Editing

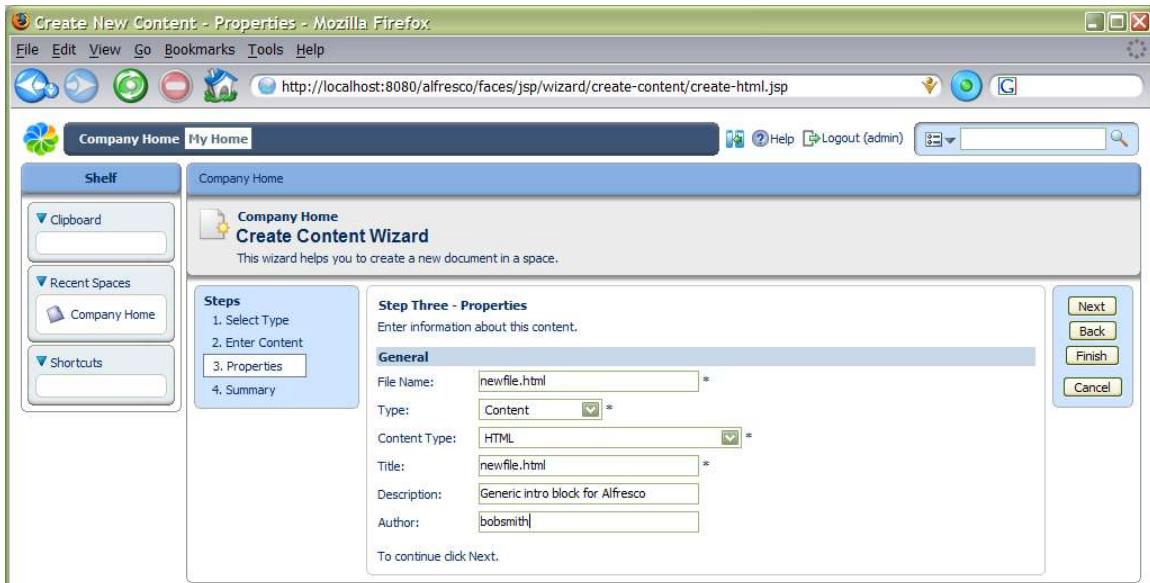
From the *Create* menu for the user's home space, select *Create Content*. A wizard is started that allows you to create new content.



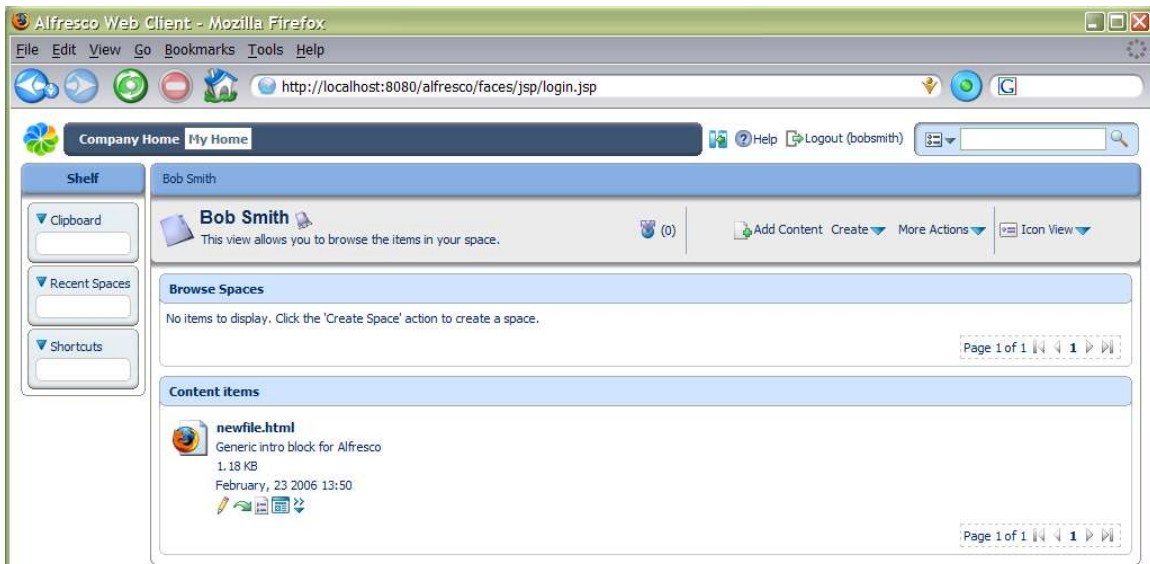
We can now add some HTML content through the WYSIWYG editor. We will add a web page as an example, including text formatting and images.



Selecting the *Next* button in the wizard takes us to a step where we can give whatever appropriate properties we want.



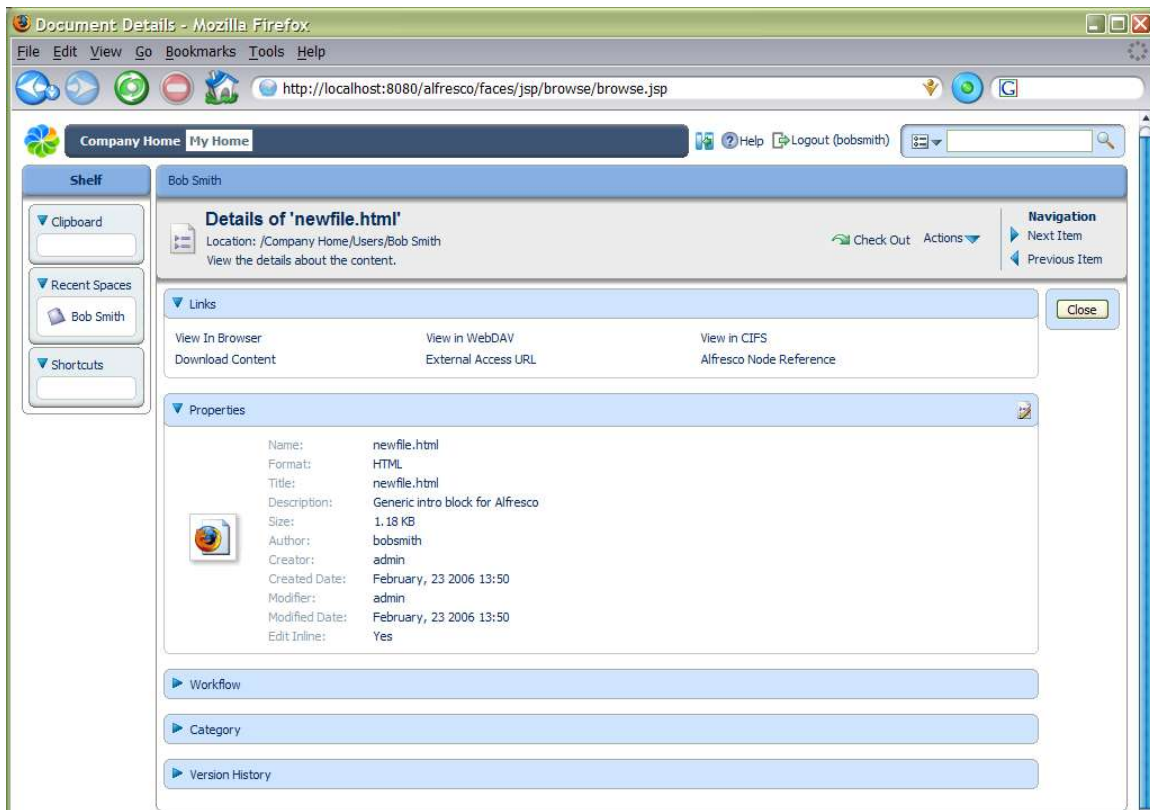
We can now either select *Next* to take us to a summary page of what new content is going to be created, or just select *Finish* now. In all Alfresco wizards, the *Finish* button becomes enabled when there is enough information to complete the task, any additional steps are optional.



We have now created our first piece of content in the repository!

Managing Properties and Meta-Data

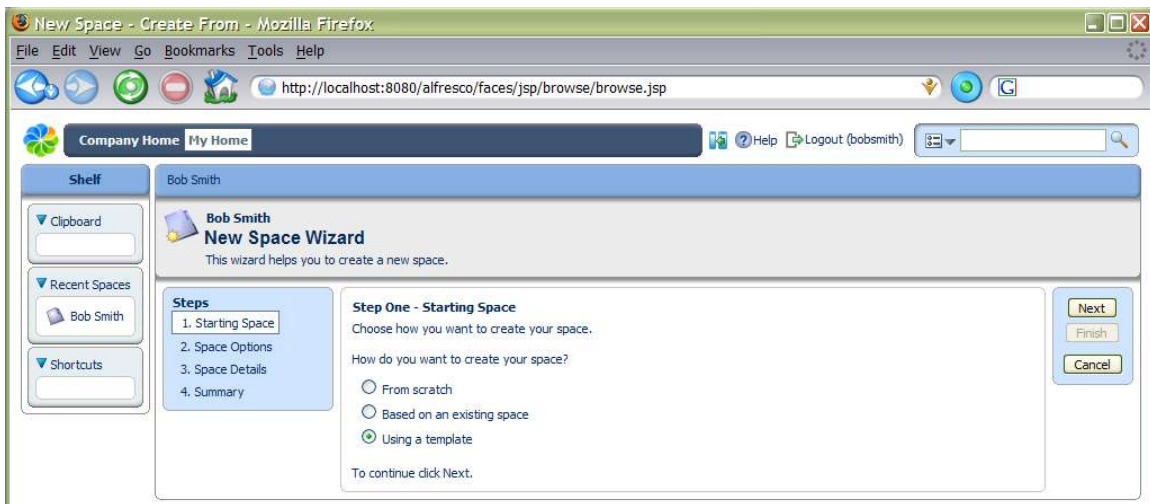
To see the details of the content item we can select the *View Details* action, one of the icons to the right of the content item (not the space details action in the header).



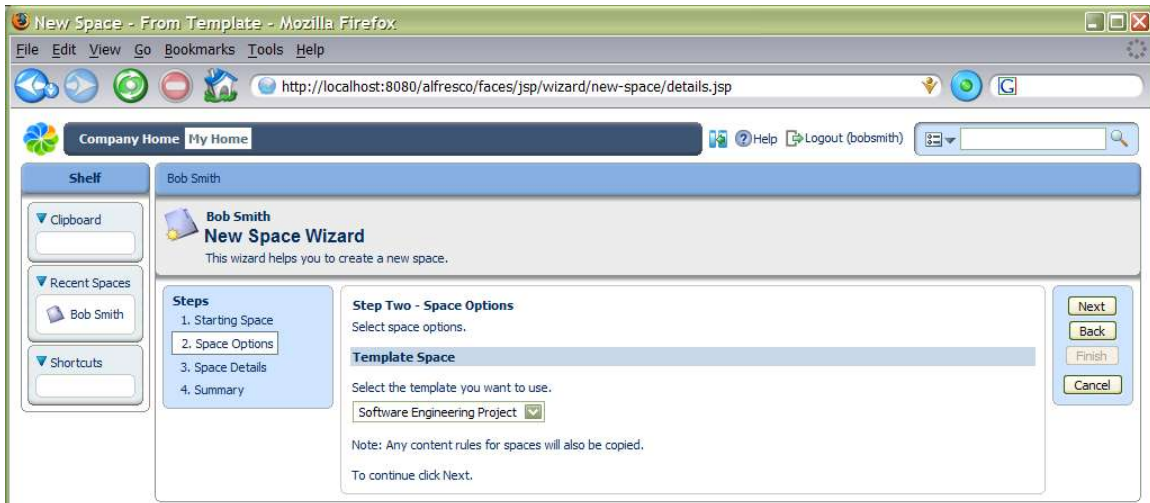
From the content details page, we can change any of the properties by selecting the edit icon for the Properties panel (right-hand side of the blue Properties bar). Selecting the *View In Browser* link in the Links panel will request the content to be viewed or downloaded through the browser. We may also download the content to your local disk as a file by selecting the content icon or name in the space browser.

Spaces

Next, we are going to set up a new project space where we can work on some content with other team members. Navigate to your Home Space (either from the breadcrumb or the toolbar). This time, rather than create sub-spaces all by hand, we are going to use a template space that contains all the standard elements we need. From the *Create* menu, select *Advanced Space Wizard*.

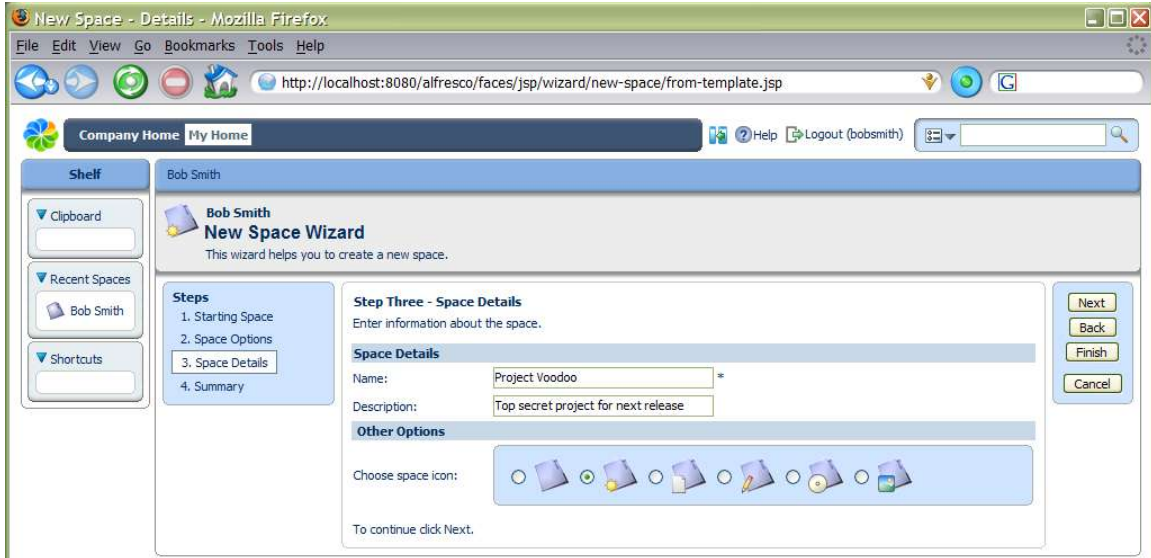


It is possible to create a complete tree of sub-spaces by basing the new space on an existing space or a template. We are going to use a template, so selecting *Next* takes us to a step where we can choose which template.



Working with Space Templates

We are going to use the *Software Engineering Project* template, so we choose this and select *Next* to specify the details we want for the new space including its name – in this case 'Project Voodoo'.



New Space - Details - Mozilla Firefox
 http://localhost:8080/alfresco/faces/jsp/wizard/new-space/from-template.jsp

Company Home My Home Help Logout (bobsmith)

Shelf
 Clipboard
 Recent Spaces
 Bob Smith
 Shortcuts

Bob Smith
New Space Wizard
 This wizard helps you to create a new space.

Steps
 1. Starting Space
 2. Space Options
 3. Space Details
 4. Summary

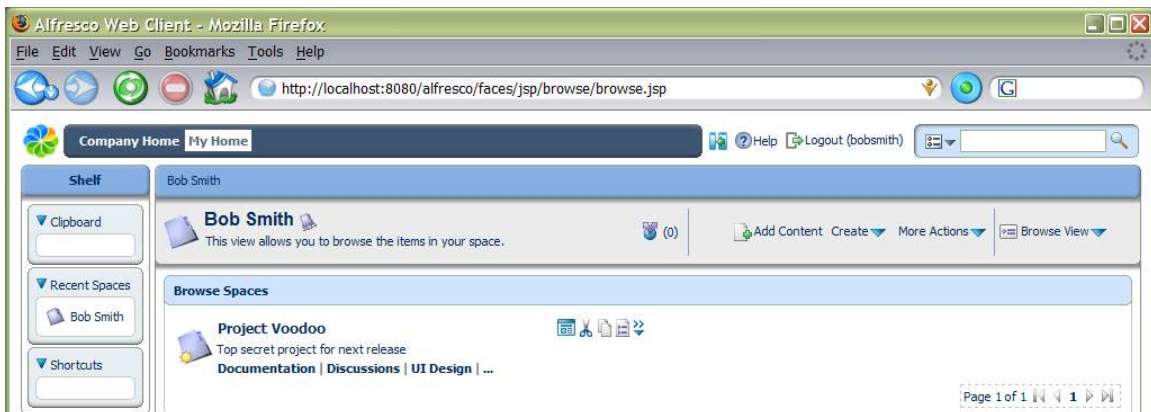
Step Three - Space Details
 Enter information about the space.

Space Details
 Name: Project Voodoo *
 Description: Top secret project for next release

Other Options
 Choose space icon: [Icons]
 To continue click Next.

Next Back Finish Cancel

Again, we can select *Next* to go to the summary page or select *Finish* now. We can see that a new space has been created with standard sub-spaces for an engineering project.



Alfresco Web Client - Mozilla Firefox
 http://localhost:8080/alfresco/faces/jsp/browse/browse.jsp

Company Home My Home Help Logout (bobsmith)

Shelf
 Clipboard
 Recent Spaces
 Bob Smith
 Shortcuts

Bob Smith
 This view allows you to browse the items in your space. (0) Add Content Create More Actions Browse View

Browse Spaces

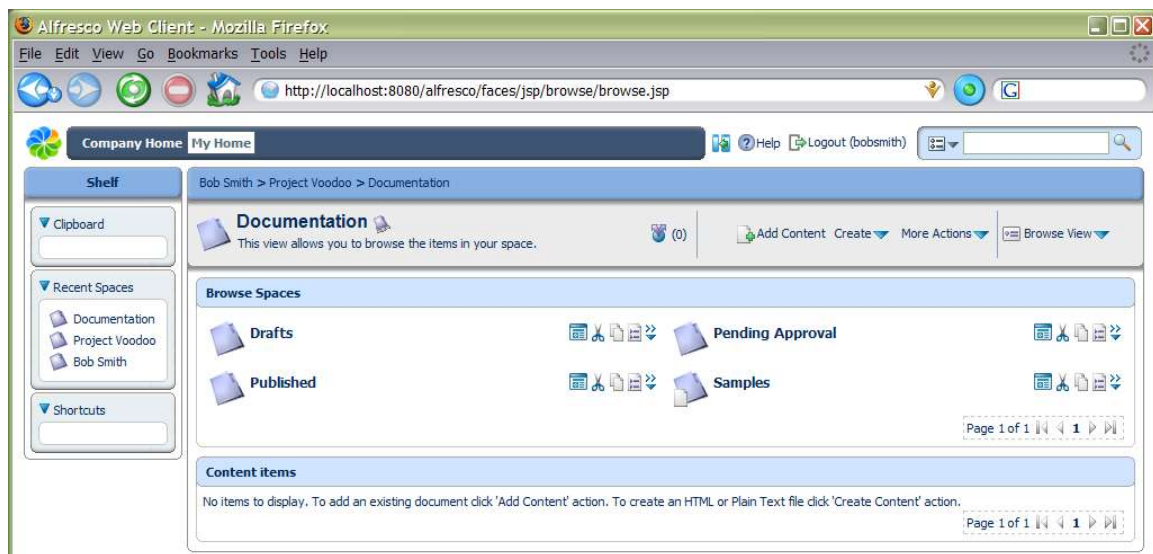
Project Voodoo
 Top secret project for next release
 Documentation | Discussions | UI Design | ...

Page 1 of 1

Smart Spaces

One of the key features of Alfresco is the ability to define rules that affect content within a space. These rules can be used to provide all kinds of creative solutions to automation and management of content. Rules are fired when content comes in or out of a space and may also apply to content directly in the space or in sub-spaces. A rule is made up of two main elements: the conditions on the content for the rule to match and the actions that are then performed. Any number of conditions and actions may be defined in a rule.

For now, we are going to add a few rules to illustrate their capabilities. We are going to make part of our new project space work in a more structured and auditable way. First we need to navigate to the Project Voodoo Documentation space.

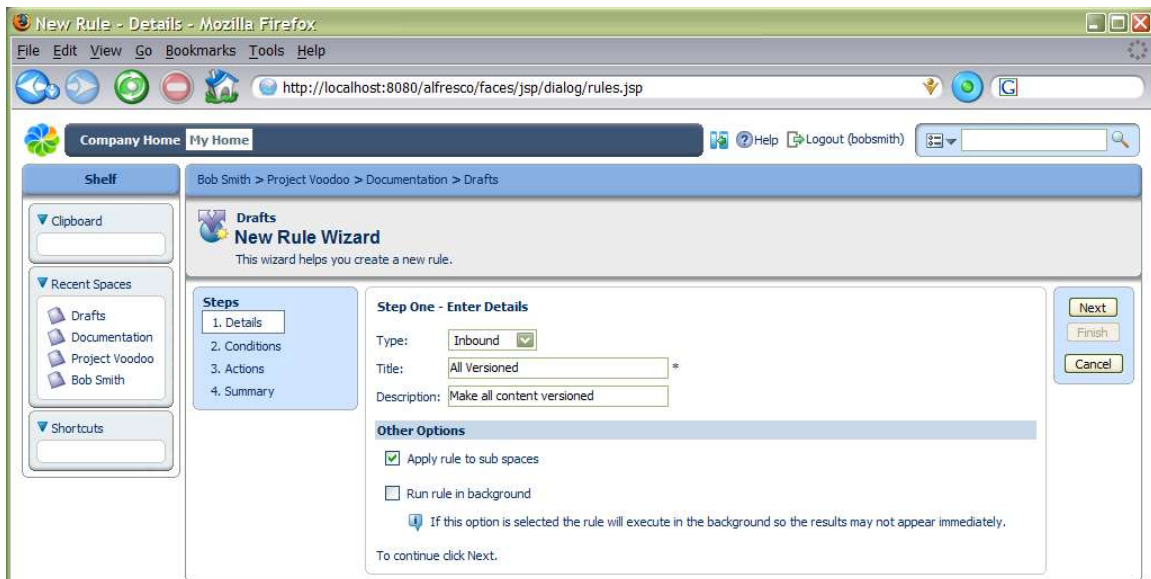


Here we can see 4 spaces that contain the documents in their different stages of completion, as well as a space with sample content. We are going to use the rules to set up a simple workflow that allows the documents to progress through these spaces. Also, since we want to allow several people to work on the documents, plus keep track of the different versions as they are edited and be able to see who changed the documents and when, then we are going to make all the content versioned. Since all the documents are going to start their lives in draft form, we navigate into the Drafts space and select the *Manage Content Rules* action (under *More Actions*).

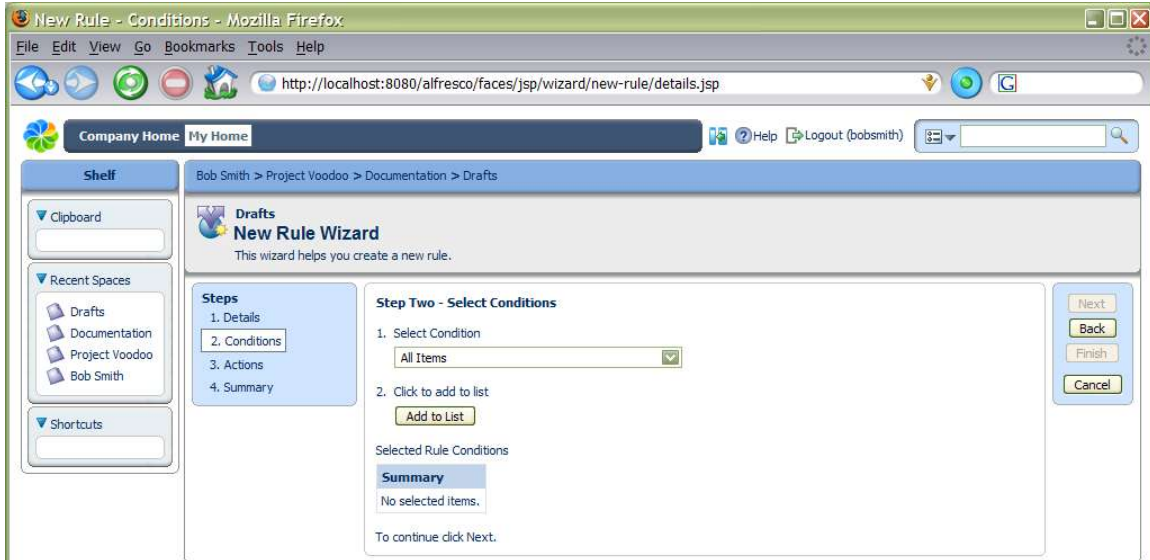


Adding Rules

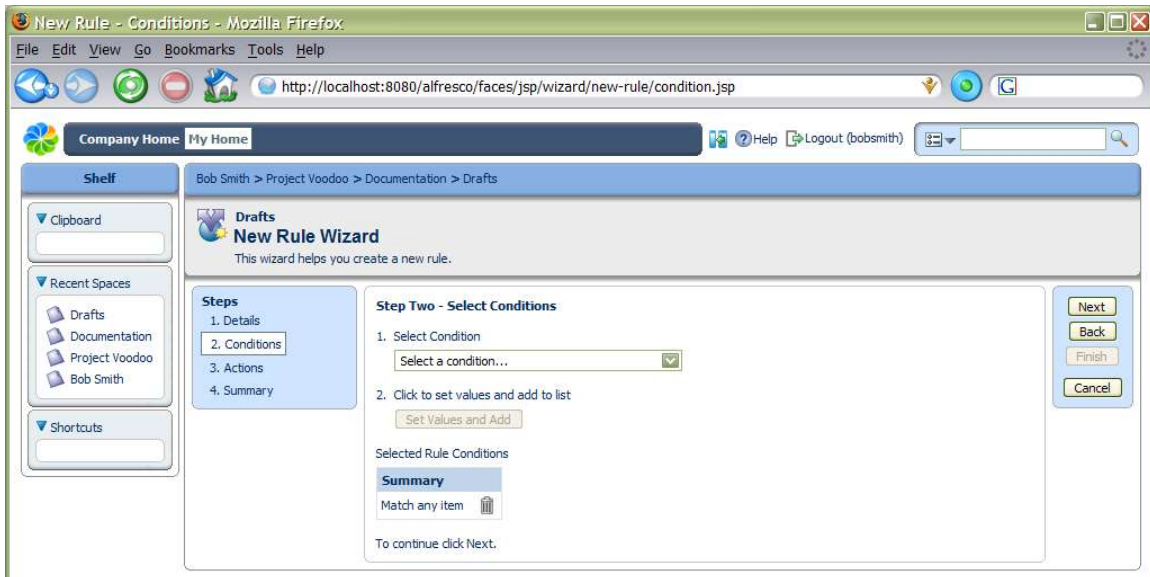
To add a new rule, select the *Create Rule* action, then we will be taken through the rule wizard to define it.



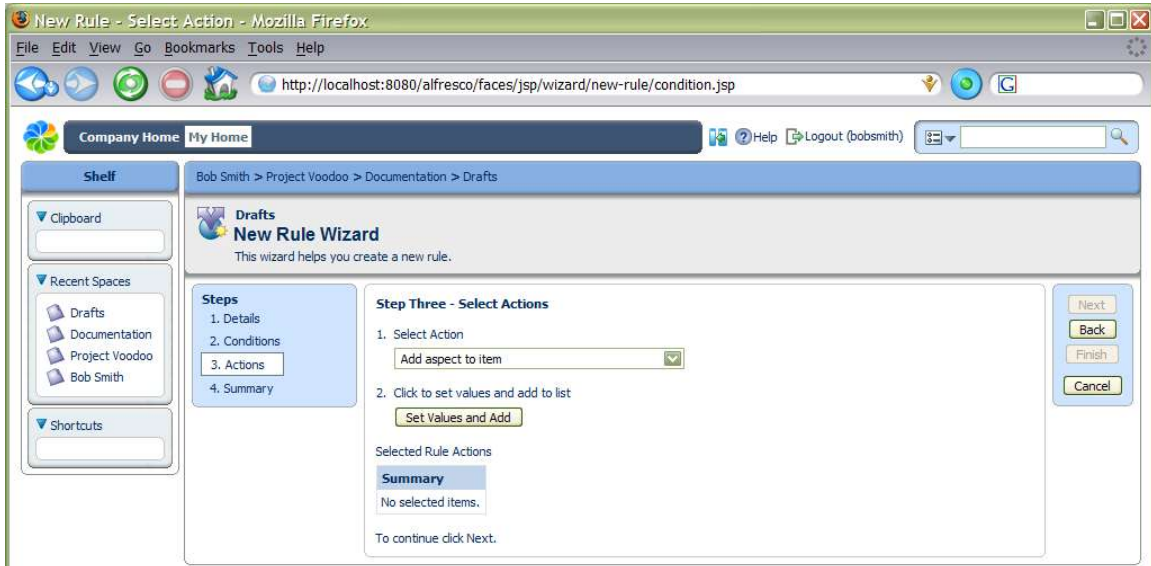
The first step allows us to choose what type of rule it is, that is to say, when the rule gets tested. Currently, the options are *inbound*, which means when content is copied, created or added to the space, and *outbound*, when content is moved or deleted from the space. We can give a title to identify the rule as well as a brief description – in this case we will give it the title ‘All versioned’. We will also enable the rule to be inherited by any sub-spaces in Drafts. The second step allows us to define the conditions that are tested on the content before the action is performed.



In this example, we are going to select *All Items*, so that the action is performed on any content added to the space. We must make sure we click the *Add To List* button to set any condition settings. Since there are no condition settings in this case, the condition is added to the list.

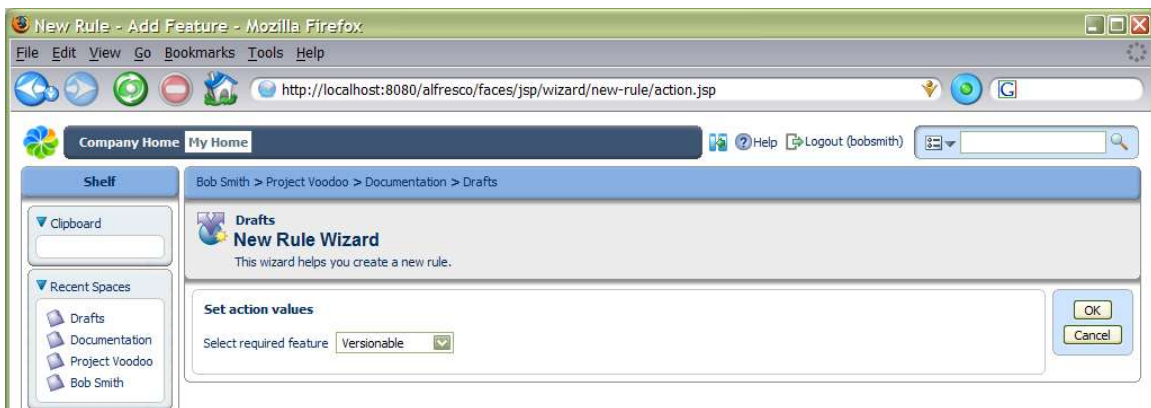


We have no additional conditions to add, so click *Next* to define the actions.

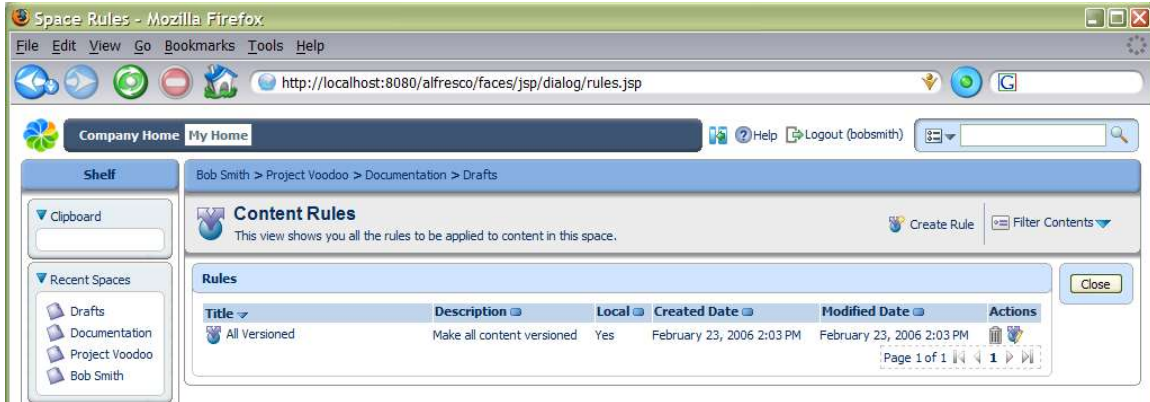


Adding Aspects

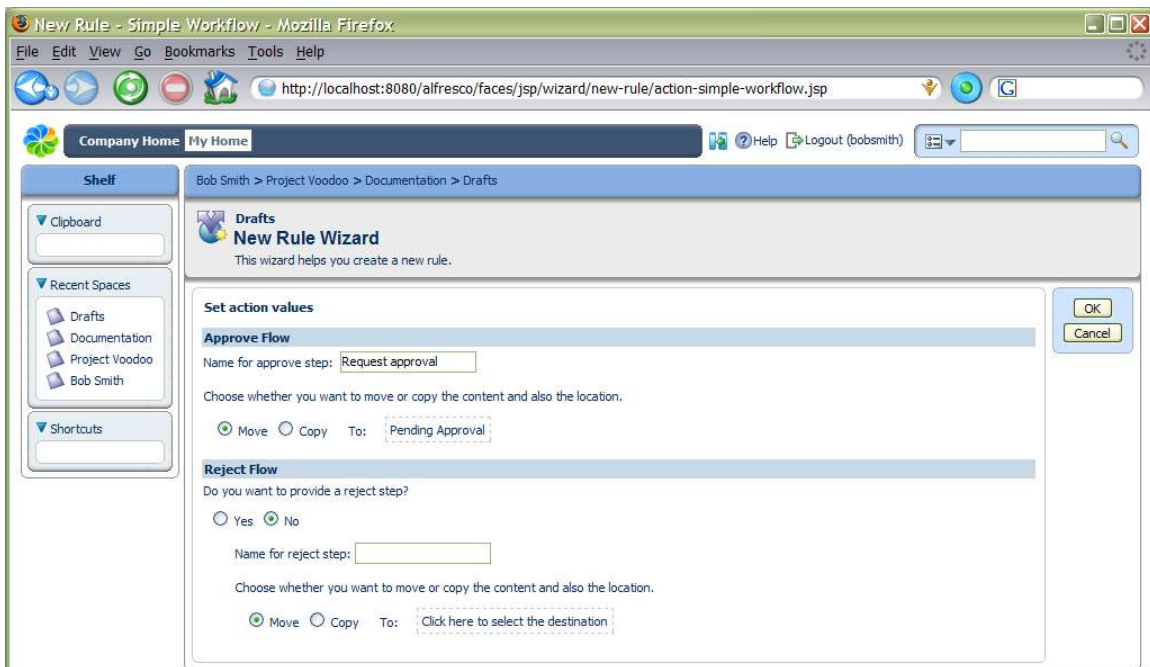
For the action we are going to select *Add aspect to item*, since we want to add the “versionable” aspect to all content. After clicking *Set Values and Add*, we give the relevant action settings, in this case choosing the actual aspect.



After clicking OK, we can now choose to finish the rule wizard, or go to a summary page to check the details of the rule before adding it.



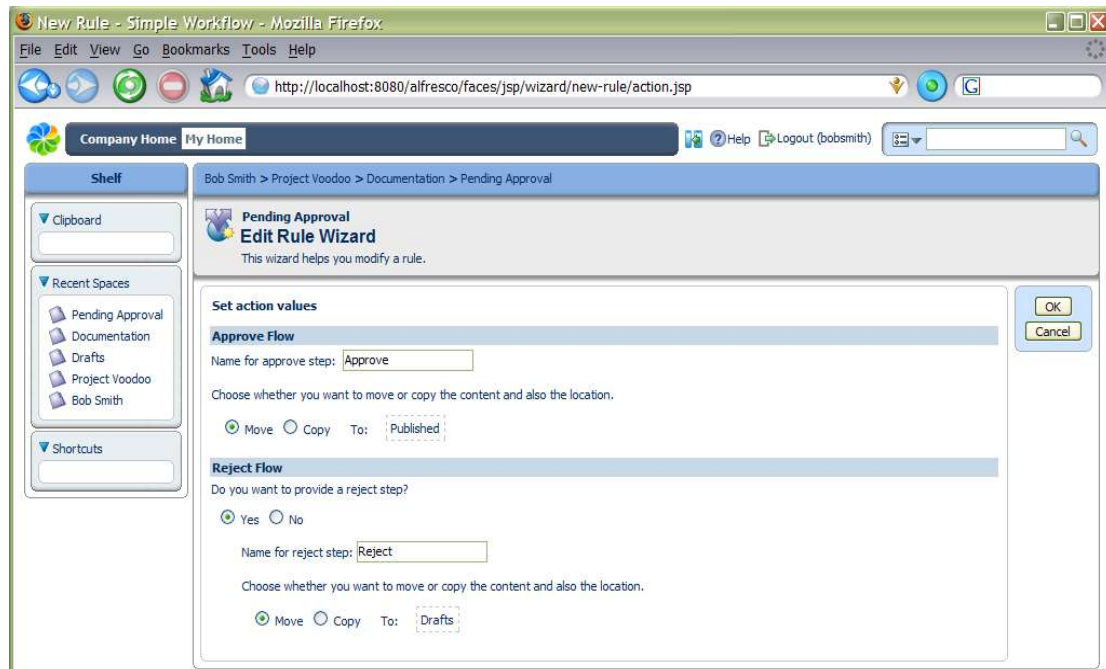
We also want to add a rule that applies a simple workflow to content in this space, so select *Create Rule* again. Going through the wizard, add an inbound rule with title ‘All simple workflow’, again with a condition of *All Items*. For the actions, select *Add simple workflow to item* and click *Set Values and Add* to fill in settings for the *Approve Flow*. For the name of the approve step, enter ‘Request approval’, leave the setting to the default of *Move* and then select the space where it should be moved – in this example, ‘Pending Approval’. Finally, select *No* for providing a reject step and click *OK*.



You may click *Finish* at this point to complete the wizard. Now we have finished defining rules on the Draft space, we can navigate to the Pending Approval space to add the next step in the workflow. Click the *Close* button from the list of rules or select *Documentation* from the location breadcrumb and navigate into Pending Approval. Again, select the *Manage content rules* action and define a simple workflow rule:

1. Select *Create Rule* and give it a title ‘Add simple workflow’;
2. Select *All items*

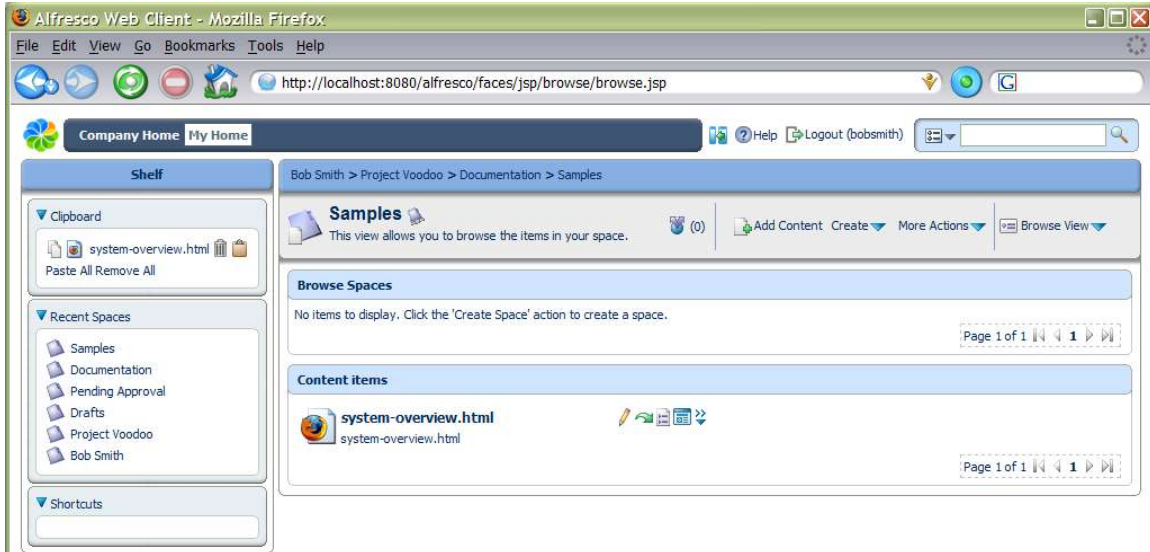
3. Select *Add simple workflow to item*
4. Add 'Publish' as the name for the approve step, leaving it as a *Move* and selecting the 'Published' space in Project Voodoo Documents
5. Say *Yes* to providing a reject step and enter 'Reject' as its name, again leaving it as a *Move* and then selecting the Draft space for it to be returned to.



We can then complete the rule. We do not need to add a rule to make all content versioned, since content should only normally be placed in here if it has been through the Drafts space, in which case it will be versioned already. To see these rules in action, we need to add some content.

Using the Clipboard

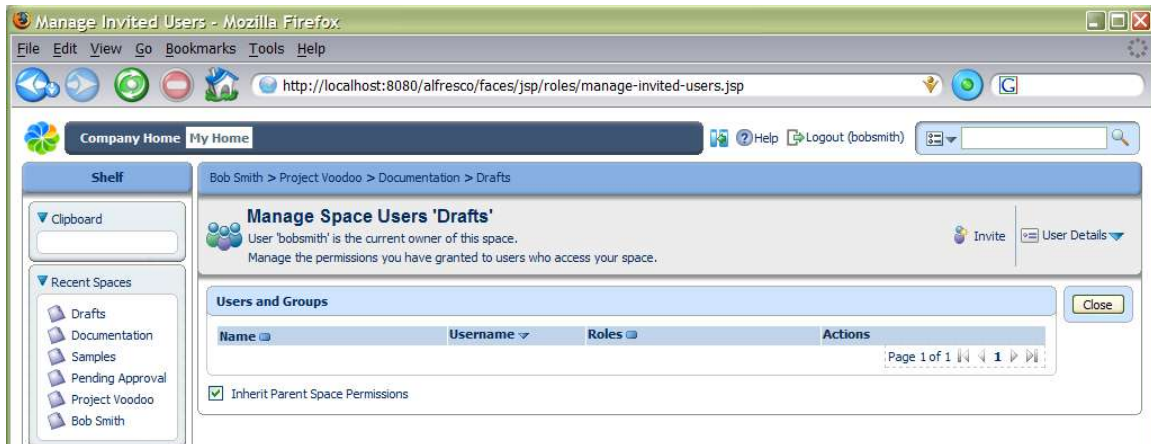
We have a sample software overview document that was created as part of the template we based our project space on, which can be found in the Samples space within Documents. Navigate to the Samples space and select the *Copy* action for 'system-overview.html' using the clipboard icon next to the scissors. This will place the item in the clipboard.



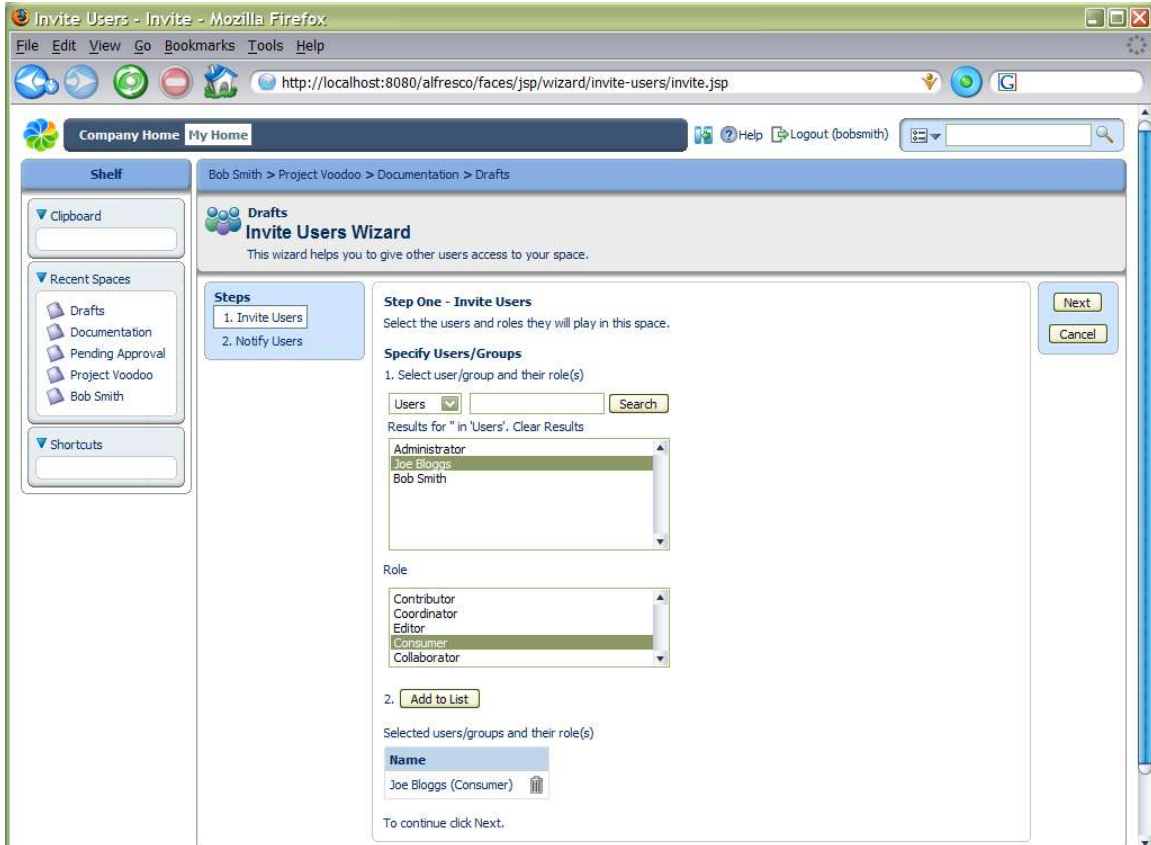
Now navigate back to the *Drafts* space and select the *Paste* action in the clipboard. This will create a new copy of the content. If we use the *Cut* action for content, a reference to it is placed in the clipboard and the content remains in its original place until we use the *Paste* action, when it is then moved to the new location. The clipboard contents are not retained over login sessions, so if you cut some content and then logout, the content will stay where it was originally.

Collaborating with Other Users

We want to work with other users on this project, so we are going to invite them to the Drafts space. From the More actions menu for the space, select the *Manage Space Users* option. This shows a list of users that have permission to work on content in the space.



Choose the *Invite* action to invite a user to the space. This opens a page to select the users and the role they can play in the space. To choose a person we need to search for them and then pick them from the list along with their role and click the *Add* button. As there are not many users in the system, we can just click the *Search* button without giving any text to match their name against.

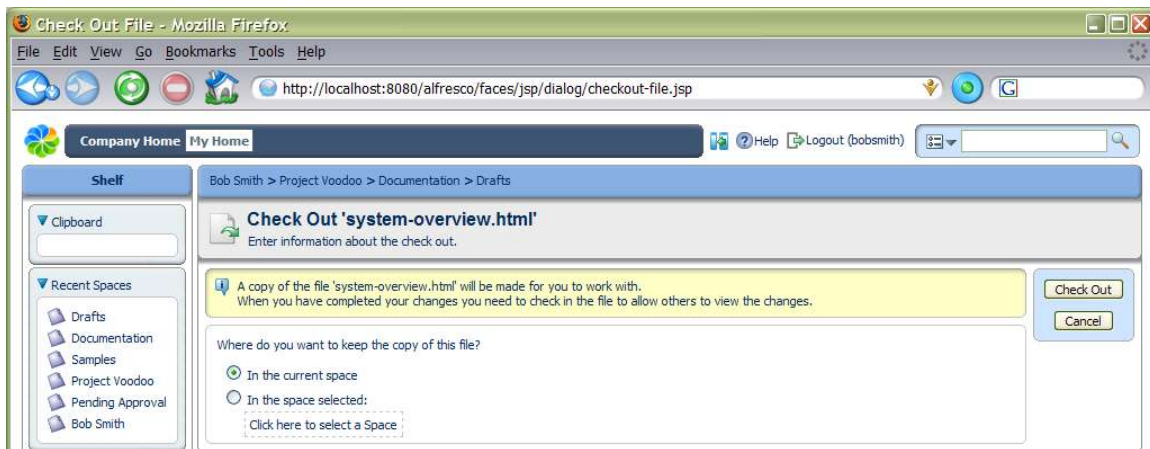


Choose the user 'Joe' and add them with the 'All' role. When we click on *Next*, we are given the option to send the invited users an email telling them about being invited. As we haven't configured email, just select the *No* option and finish.

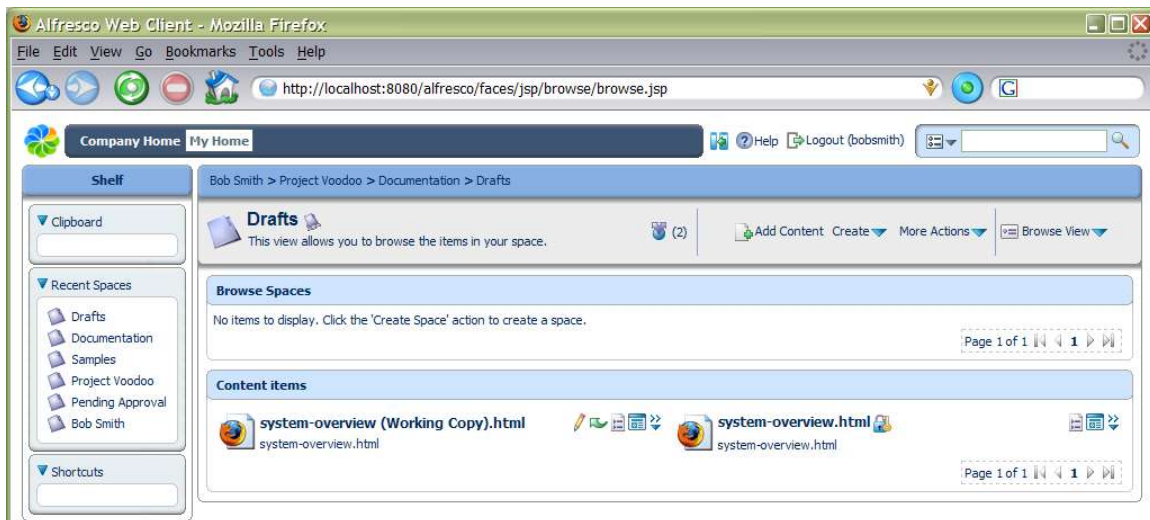
Click the Close button to return to the Drafts space.

Checking Out Content

Since several people may collaborate to work on this content, we will do a “check out” of it to create a working copy, while locking the original. Select the *Check out* action for ‘system-overview.html’ – if you are not sure which icon does what action, hold your mouse over the icon and a tool tip should popup with its name. The check out action is a green downward arrow. This brings up dialog that gives us the choice of checking out the working copy to the same space as the original, or any other space. Some people like to work with one space that contains all their current work-in-progress, so may have created a specific folder in their home space for working copies. We are just going to keep the working copy in the current space.

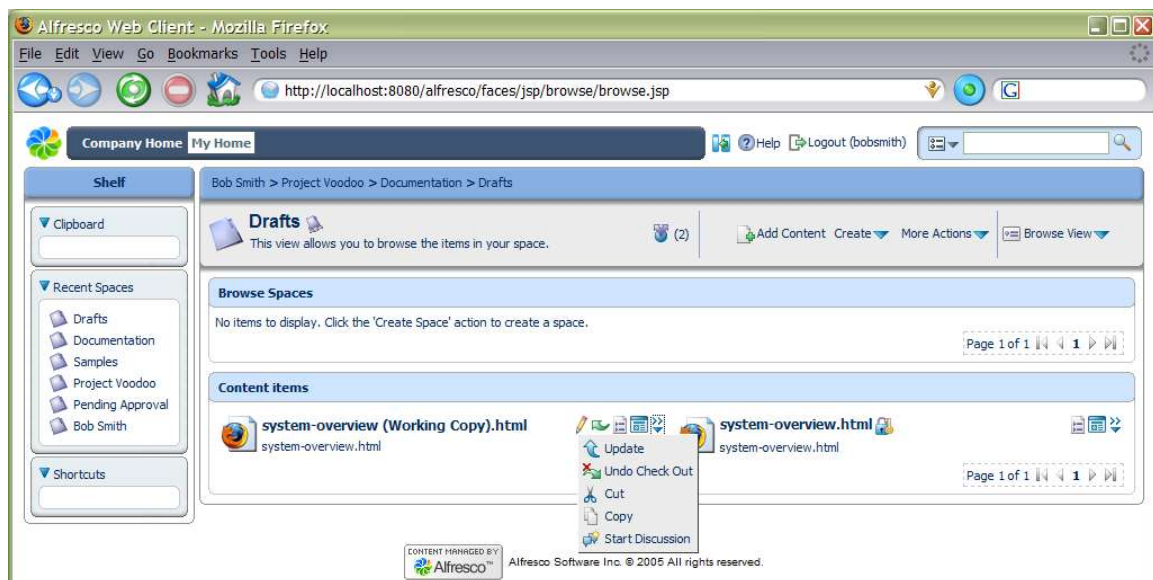


Clicking the *Check Out* button takes us to a page where we can choose to download the content for editing in some other program. Clicking *OK* takes us back to a view of the space, now containing 2 items.

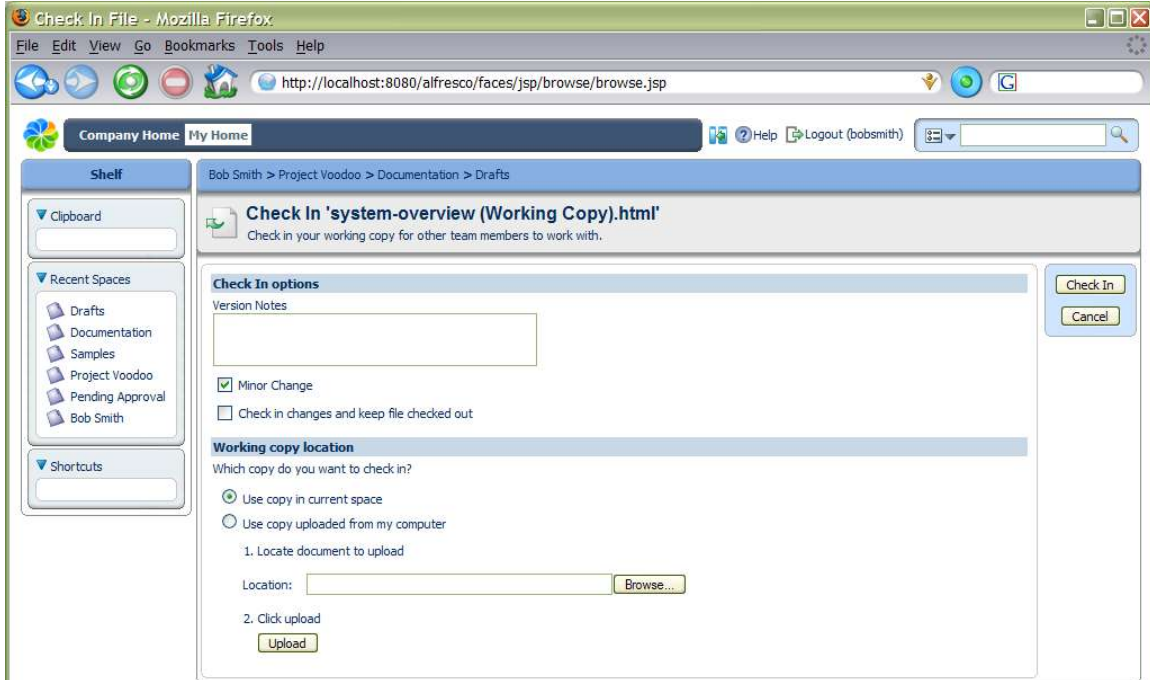


Checking In Content

The lock icon against the original lets us know that we cannot change it. The only way we can modify it is to undo the check out on the working copy, or to “check in” the working copy. If there is a key on the lock it means we are able to check in or cancel the check out. We can see who has checked out the content by hovering the mouse over the lock. First we are going to edit the document and add some minor changes to the text. Once saved, we can now check in the content. Often, content will stay checked out for several days while someone makes their changes to it. It is possible to take a copy of the content onto the desktop and work with it off-line. If we do this, we can always upload any alterations to the working copy using the *Update* action (from the popup menu) without the need to check in.



Selecting the *Check In* action will overwrite the original with the updated working copy, making it available for people to edit it again. Make some changes by editing the content (pencil icon) and check in the content. If we had a more up-to-date copy of the content on our desktop, we could choose to upload it at this point and check it in. In this case we are just going to use the copy that is currently in the space, so just click the *Check In* button.



As the content is versioned, then the original content is still available to view from its version history. Select *View Details* for 'system-overview.html'.

Version History

We can expand and contract the version history block by clicking the triangle alongside *Version History*. The current version is also listed in the history.

Document Details - Mozilla Firefox

File Edit View Go Bookmarks Tools Help

http://localhost:8080/alfresco/faces/jsp/dialog/document-details.jsp

- Drafts
- Documentation
- Samples
- Project Voodoo
- Pending Approval
- Bob Smith

Shortcuts


Links

View In Browser View in WebDAV View in CIFS

Download Content External Access URL Alfresco Node Reference

Close

Properties


Name: system-overview.html
Format: HTML
Title: System Overview
Description: system-overview.html
Size: 0.54 KB
Version Label: 1.1
Auto Version: Yes
Creator: bobsmith
Created Date: February, 23 2006 14:28
Modifier: bobsmith
Modified Date: February, 23 2006 14:31

This document is not inline editable.

Allow Inline Editing

Workflow

Category

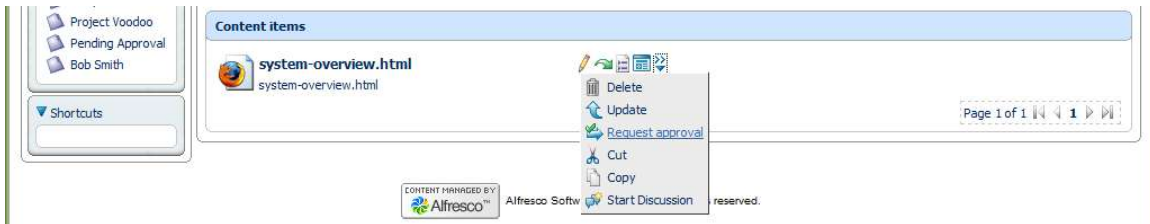
Version History

Version	Notes	Author	Date	Actions
1.0		bobsmith	February, 23 2006 14:28	View
1.1		bobsmith	February, 23 2006 14:31	View

Page 1 of 1

Sending Content for Review

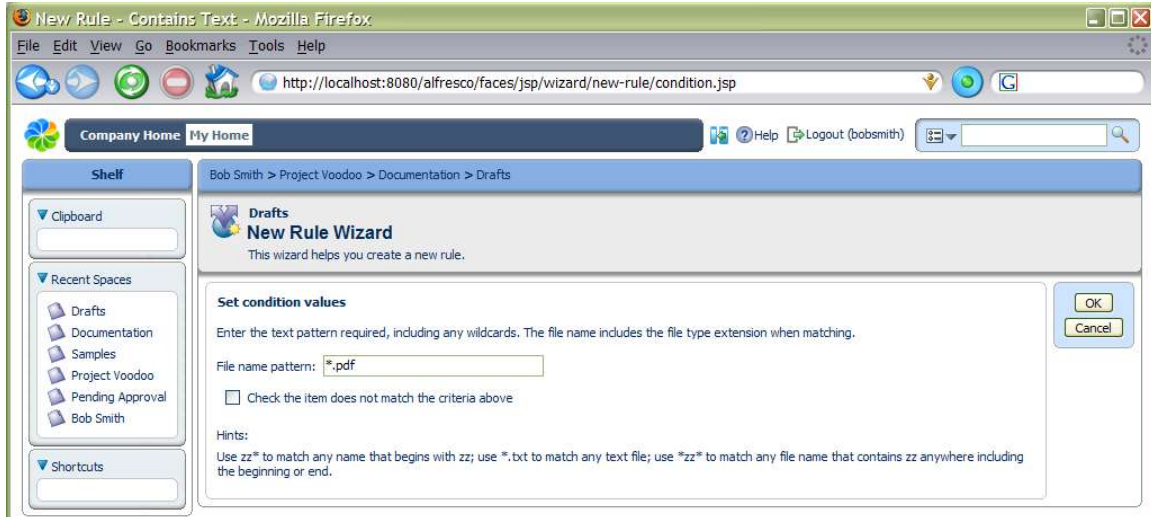
Now that we are happy with our content, we can send it for review. Any workflow steps that are available for an item of content are shown in its actions, either from the popup actions available in the space view, or from the actions on the item's details view. In this example, the only available workflow step is *Request Approval*. Select this action to move the content to the Pending Approval space, so it no longer shows in the Drafts space.



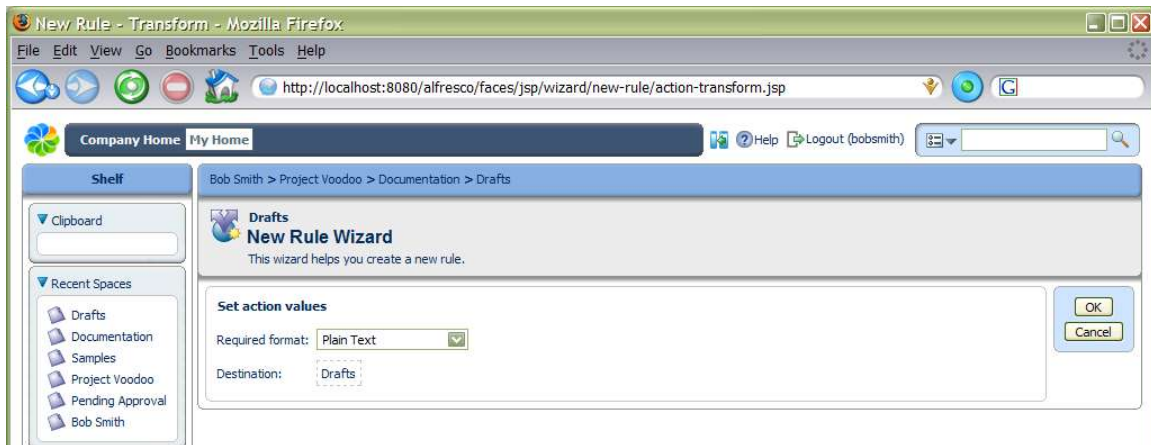
We can define a rule for all content with an action that will allow email alerts to be sent to people, which can be used in this case to let the appropriate person know that there is some content waiting to be approved. If we navigate to the Pending Approval space, we can see the 'system-overview.html' content. This time, if we look at the workflow steps available we see *Publish* and *Reject*, because the rule for this space added these steps when the content was moved here. Select the *Publish* action to move the content on to the Published space, whereas if we had selected the *Reject* action it would have been sent back to the Drafts space.

Uploading and Transforming Content

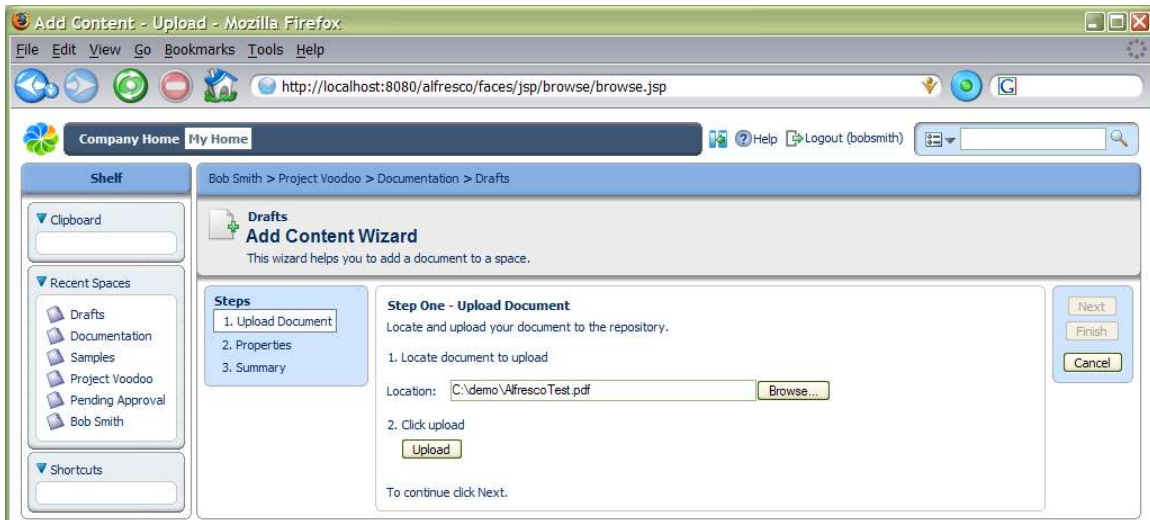
In this next example, we are going to define a transformation rule that will convert content added to a space into a different format. The scenario is that we need to re-use marketing content, which is available in PDF, within some of our software documents, so getting the basic text of the marketing content is very helpful. Navigate back to the Drafts space in Project Voodoo and select the *Manage Content Rules* action. Create a new rule named 'Transform PDFs' and select *Items which contain a specific value in its name* as the condition. For the condition setting, enter a pattern of '*.pdf'.



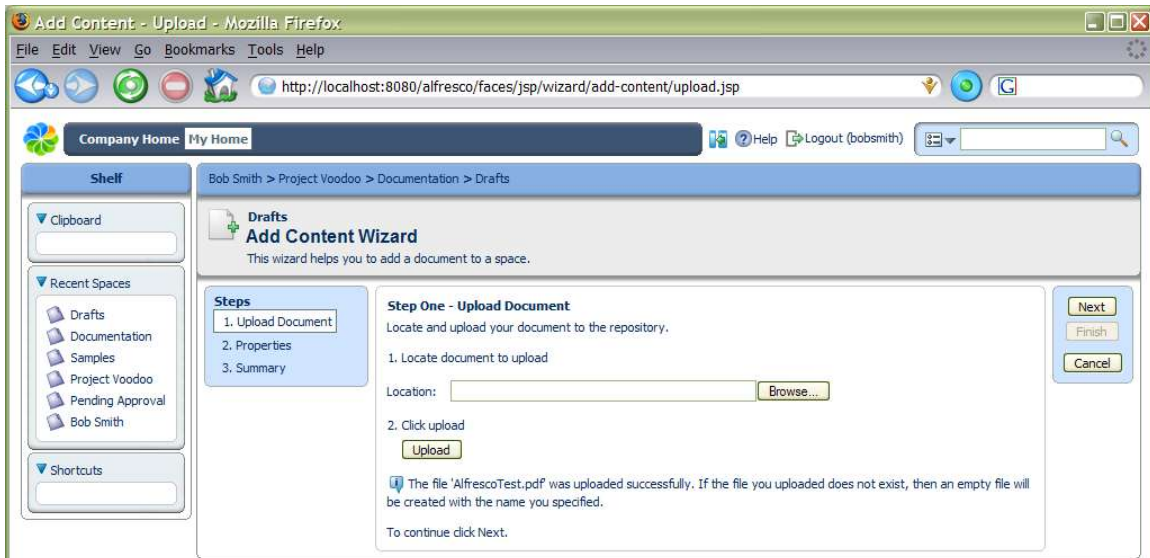
On the action step, choose *Transform and copy content to a specific space* and for the action settings, select *Plain Text*. By default this is the only option unless you have OpenOffice installed (www.openoffice.org), which enables a wide range of transformations to be configured for use. Next select the destination space for the transformed content, in this case we will keep it in the Drafts space.



Finish the rule and we will return to the Drafts space. Now we can upload a file to exercise the rule. Select the *Add Content* action within Drafts and browse to a PDF file – a sample file is available in the Alfresco installation folder.



Select the *Upload* button and wait while the file is uploaded to the Alfresco server. A message will appear confirming the upload and then we can click the *Next* button.



We will get taken to the next step in the wizard, which has the same options as we completed for creating the content within the browser earlier. On finishing the wizard, we will be returned to the Drafts space, but there will be two new documents: the PDF and the text version of it.

Alfresco Web Client - Mozilla Firefox

File Edit View Go Bookmarks Tools Help

http://localhost:8080/alfresco/faces/jsp/wizard/add-content/properties.jsp

Company Home My Home Help Logout (bobsmith)

Shelf

Clipboard

Recent Spaces

- Drafts
- Documentation
- Samples
- Project Voodoo
- Pending Approval
- Bob Smith

Shortcuts

Bob Smith > Project Voodoo > Documentation > Drafts

Drafts

This view allows you to browse the items in your space. (3)











Add Content Create More Actions Browse View

Browse Spaces

No items to display. Click the 'Create Space' action to create a space.

Page 1 of 1

Content items

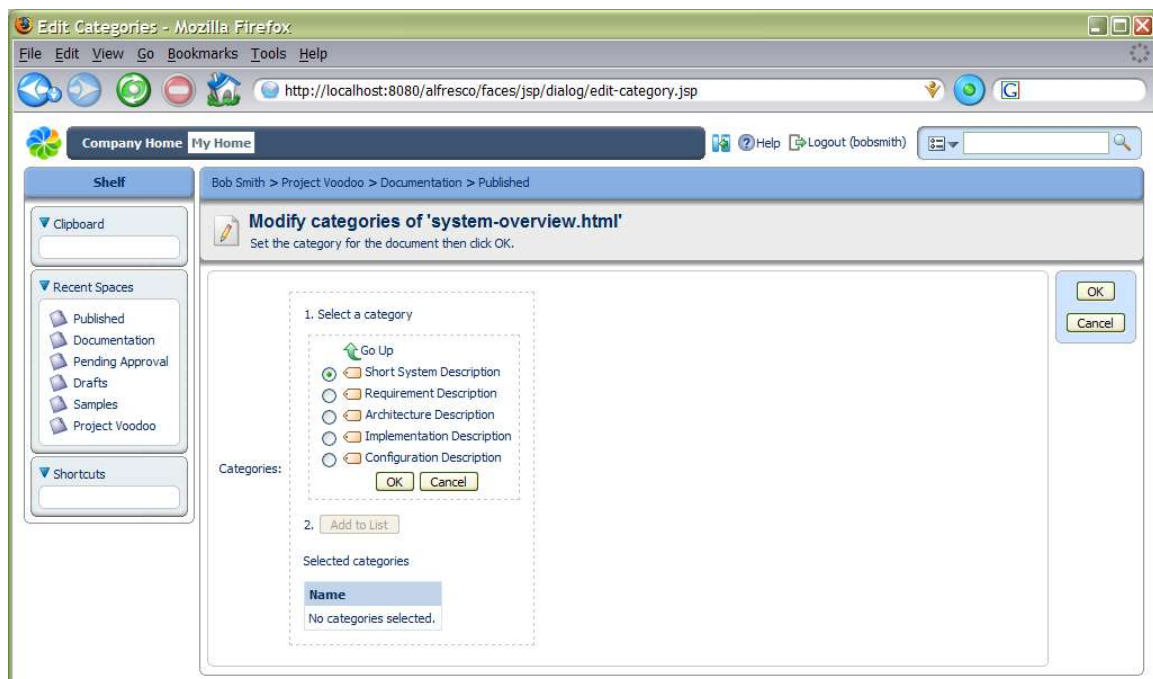
 AlfrescoTest.pdf	  	 AlfrescoTest.txt	  
 system-overview.html system-overview.html	  		

Page 1 of 1

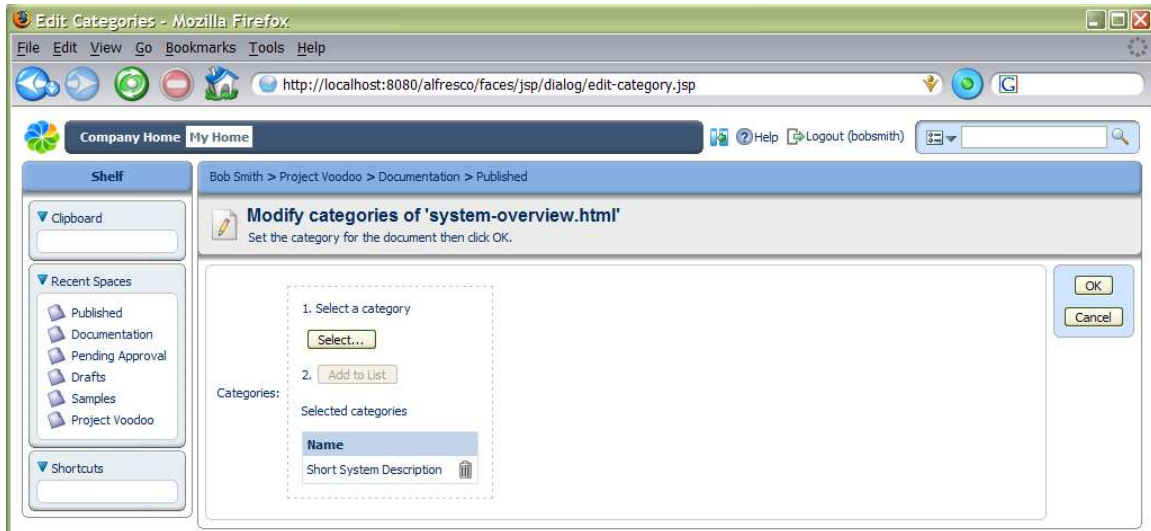
Categories and Advanced Search

One of the other features of Alfresco is the ability to assign categories to items. This allows information to be classified in any number of different ways. With this, we can retrieve items that match combinations of constraints, including categories. The smart thing that categories provide is that they are aware that they are hierarchical, so searching for an item in a higher-level category will also find anything classified below it. In the following example, we are going to add some content to a category and then search for it.

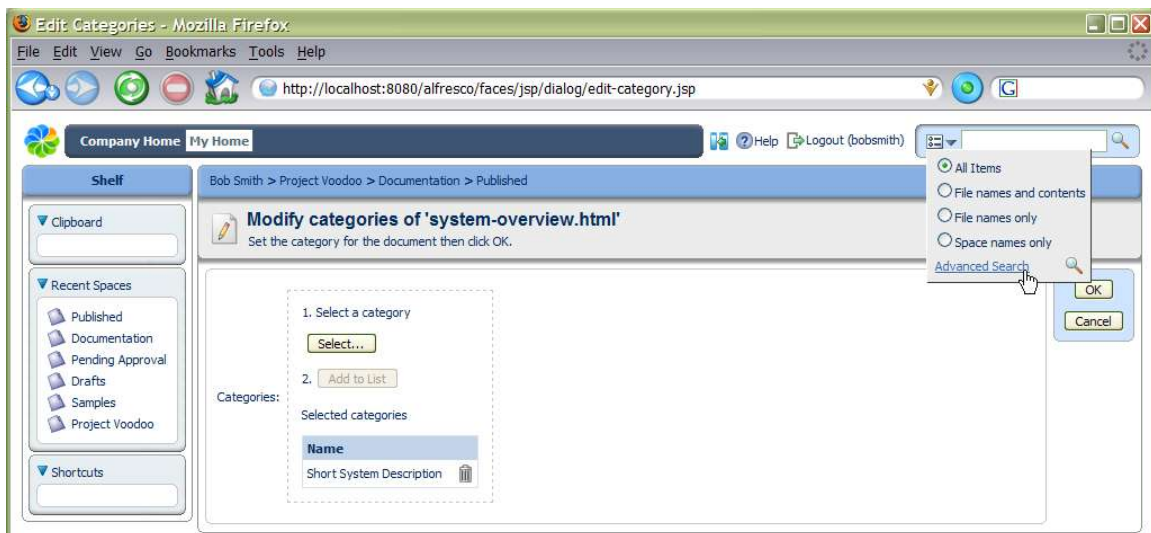
The first step is to make the content able to be categorized, which can be done through the content's properties page. Navigate to the Published space and select the *View Details* action for 'system-overview.html' (one of the icons next to the content, not the space details). If we expand the *Category* block and if the item is not categorized, we can select the *Allow Categorization* action. Now we can choose the *Change Category* icon in the right-hand corner of the block, which opens a view to allow a category to be selected. Select through 'Software Document Classification', 'Software Descriptions', 'Main Software Descriptions' and select 'Short System Description'.



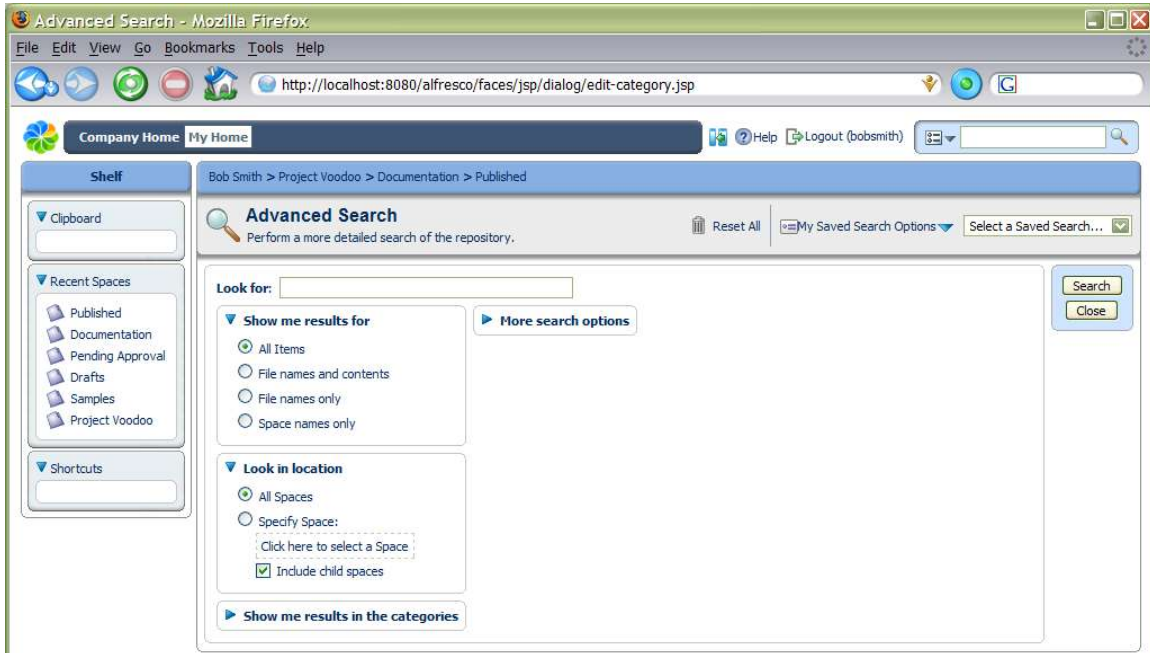
As we can put this content in any number of categories, we need to click 'Add to List' even though we are only going to set one category.



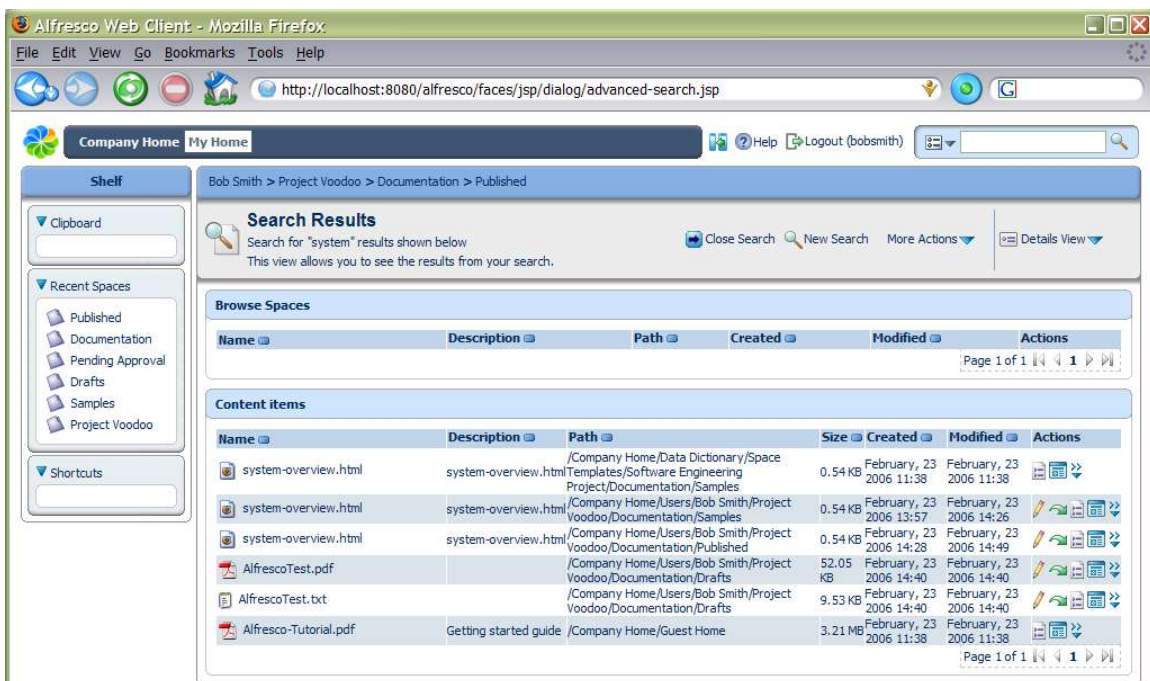
We can now use the advanced search to try and find this content. The advanced search page is opened from the popup menu in the toolbar search. When we enter text in the toolbar search, it will search throughout all available spaces, although we can constrain it to just find the text in names or also the content. Select the *Advanced Search* option.



From this page there are a number of options available, beyond what text to search for. It is possible to specify the starting space for the search, so that only content beneath that space is searched. In this example, we will look for the text 'system' - clicking the *Search* button will start the search. We will get a list of all content that has 'system' in its name, or somewhere in its content.



The *Details View* is usually the best for viewing search results. Also, if we view an item's details, we can navigate through the results using the Next Item and Previous Item navigation actions.



We can also choose a category in which the content must be in to be found. Run the search again, but set it to look only for content in the 'Software Descriptions' category. For this example, we only have one document that matches this, because 'Short System

Description' is within the 'Software Descriptions' category. If we were to choose a different category, such as 'Development Plans', then no content would be found. We can also include other options for the search, such as the kind of document we are looking for, or a range of dates for its creation or modification.

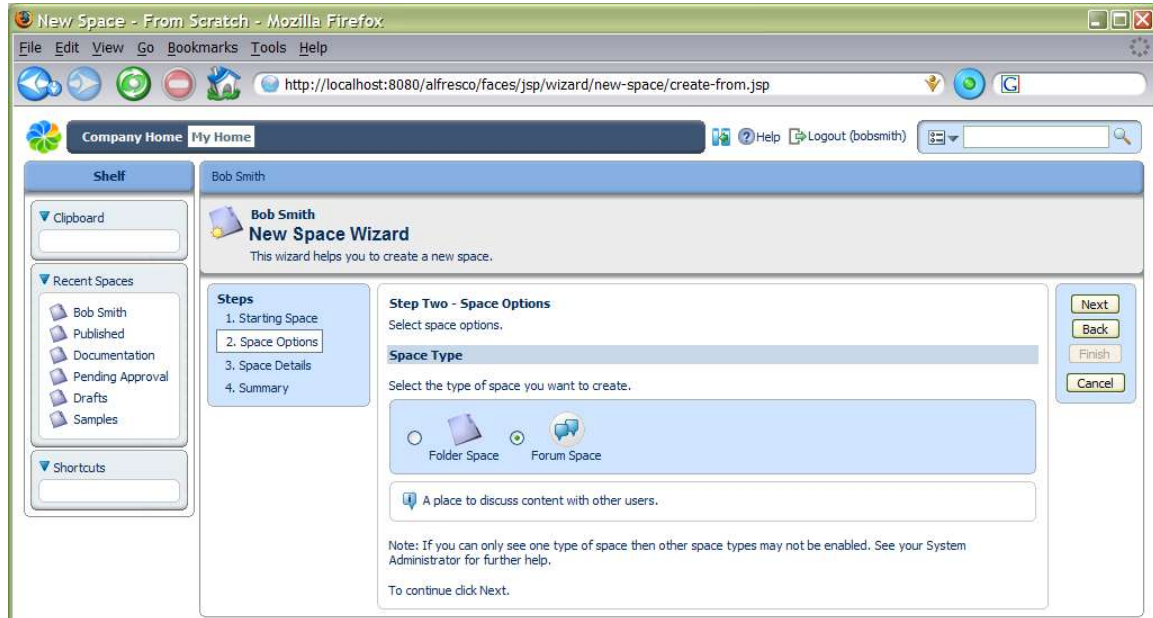


The screenshot displays the Alfresco search interface with the following elements:

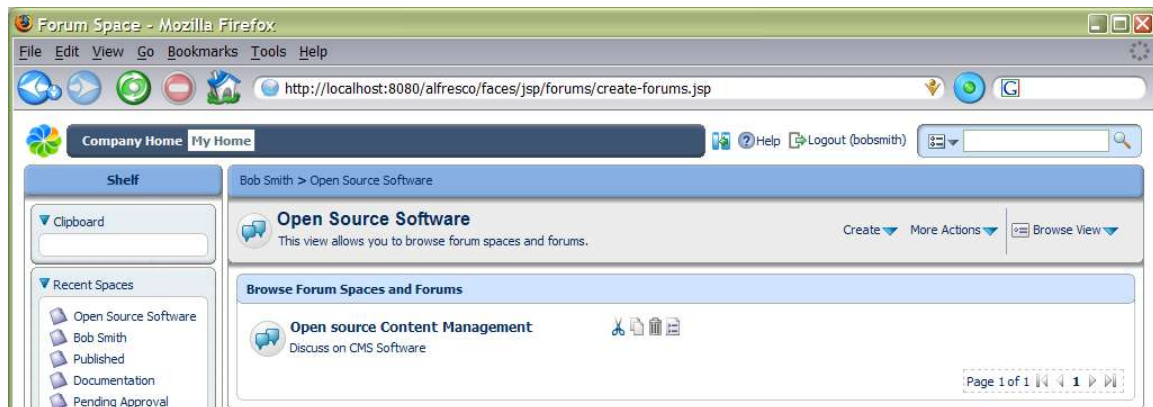
- Look for:** A text input field containing the word "system".
- Show me results for**: A button with a right-pointing triangle icon.
- Look in location**: A button with a right-pointing triangle icon.
- Show me results in the categories**: A section containing:
 - A list box with "Software Descriptions" selected.
 - A checked checkbox labeled "Include sub-categories".
 - An "Add to List" button.
 - A table with two columns: "Category" and "Include sub-categories". It contains one row: "Software Descriptions" and "Yes".
- More search options**: A section with a downward-pointing triangle icon, containing:
 - Content Type:** A dropdown menu set to "Content".
 - Content Format:** A dropdown menu set to "All Formats".
 - Title:** An empty text input field.
 - Description:** An empty text input field.
 - Author:** An empty text input field.
 - Modified Date:** A section with an unchecked checkbox and two date pickers. Both "From" and "To" are set to "23 February 2006".
 - Created Date:** A section with an unchecked checkbox and two date pickers. Both "From" and "To" are set to "23 February 2006".
- Additional options**: A button with a right-pointing triangle icon.

Forums and Discussions

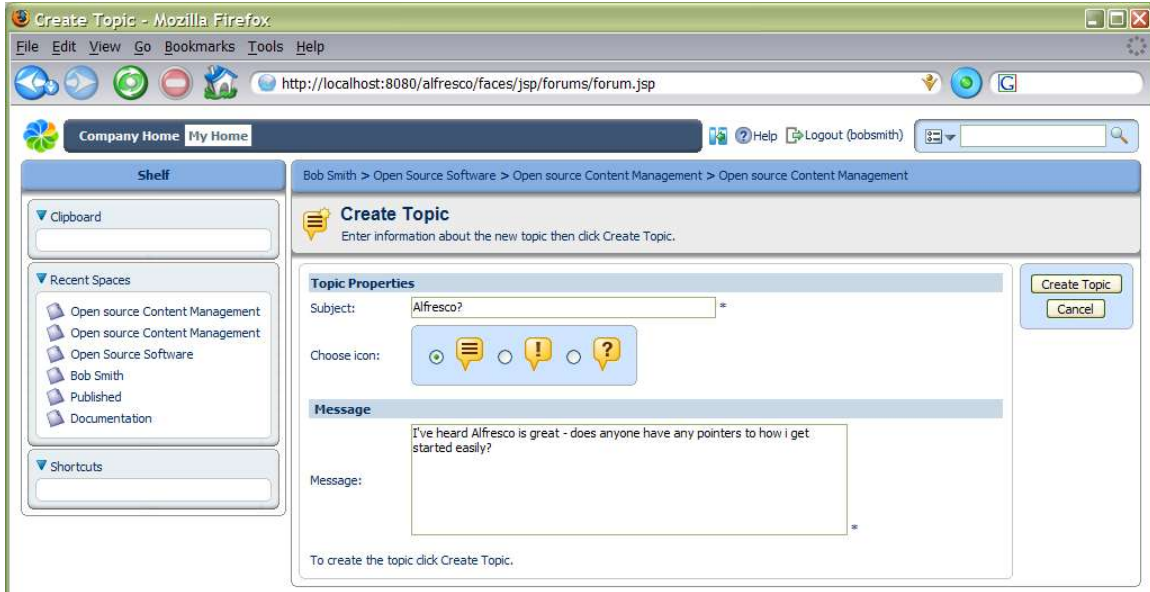
Alfresco provides an easy way for people to collaborate using forums and discussions. Forums contain *topics* of discussion and topics contain *posts* from different users. A forum space is used to contain a collection of forums, so the first step needed is to use the New Space Wizard to create a forum space.



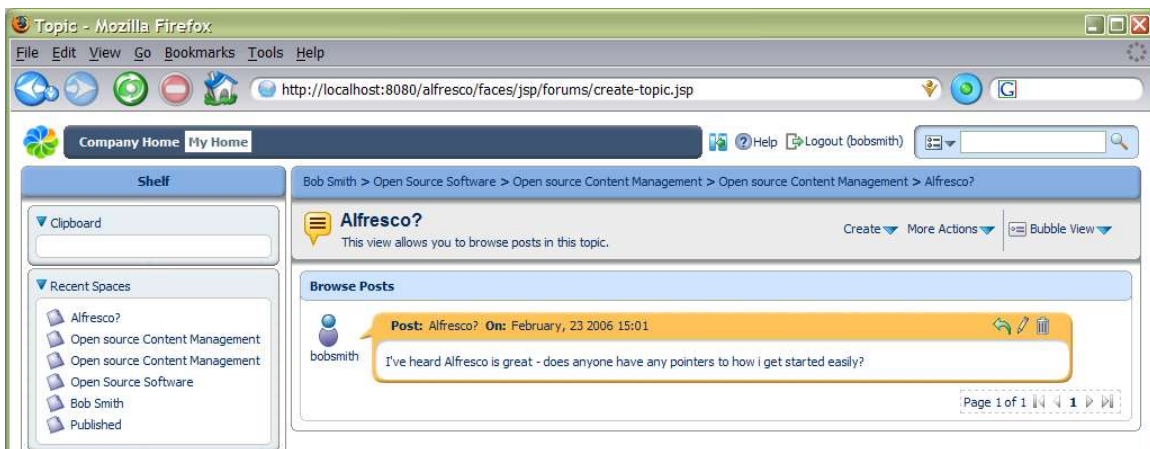
A forum space can contain any number of forums, or even other forum spaces if wanted. Select the Create Forum action a forum.



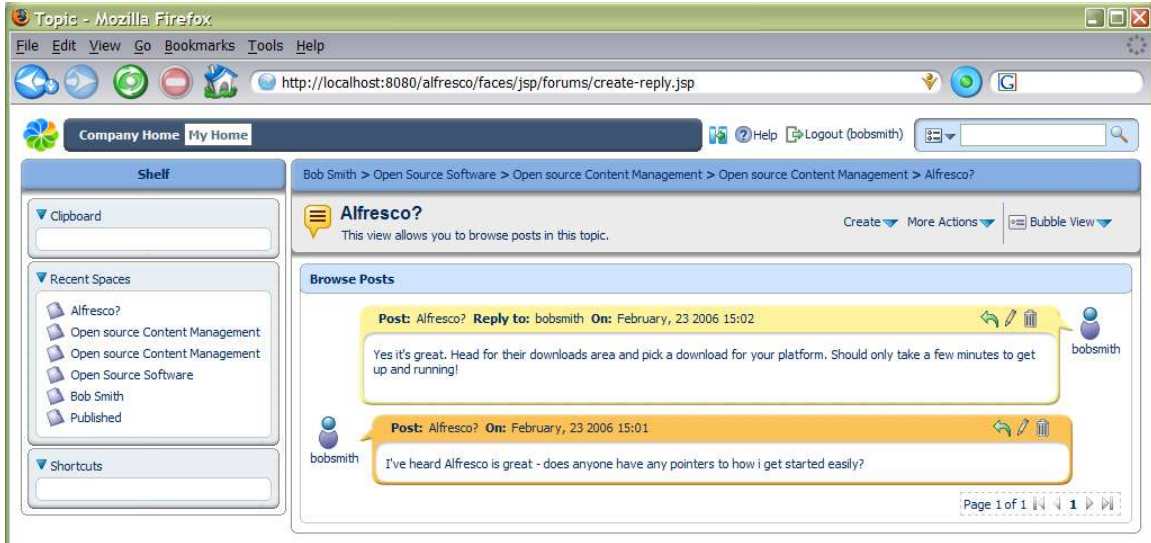
From within a forum, select the Create Topic action to add a new topic and the first post to it. You can choose a different icon for the post to highlight the type of posting.



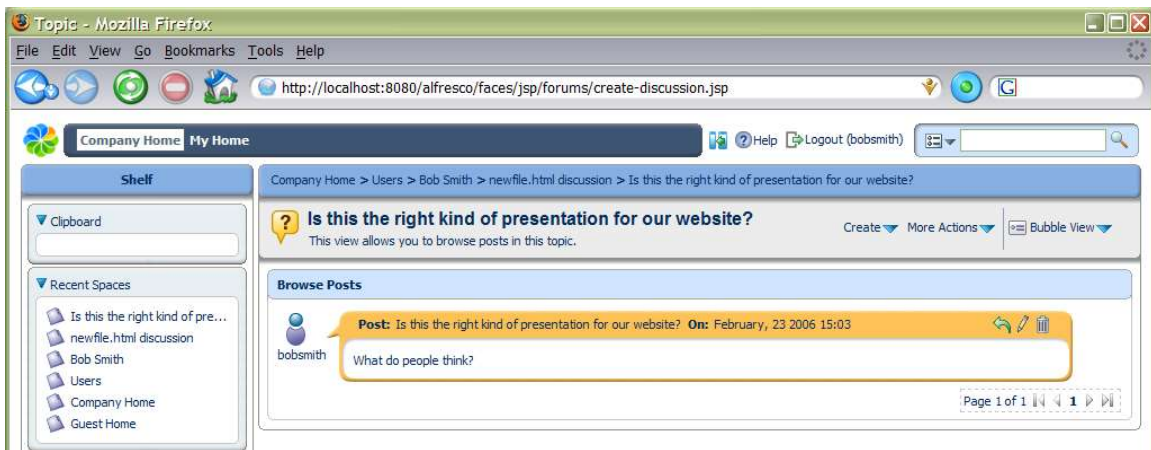
Once a post is created, it is always possible to edit and change it, or even delete it (the icons on a post determine what actions you are allowed to take).



Now any other user with the right permissions will be able to reply to the post (using the green reply icon). By default, the most recent post is at the top, but this can be changed.



Discussions are just like a forum attached to a piece of content. Where ever the document is moved, the discussion goes with it. They provide an ideal way to record decisions or annotations about a document without changing the content. To start a discussion on an item, select the Start Discussion action from its more actions menu. Once a discussion has been started, other additional topics for discussion can be added later.



It is easy to see whether there is a discussion on an item, as an icon action to view the discussion is shown alongside it in the space view.

If you check out a document that has a discussion, the working draft will not automatically have one, but you can start a discussion on it. When the working copy is checked in, then any discussions on it are added to those in the original discussions (with a date stamp). While content is checked out, the original content is locked, but discussions can still continue on it.

Summary

We have meandered around much of the Alfresco system, with a view to giving you some ideas about the approaches Alfresco is taking to managing content. The functionality of the system will be expanded considerably over the following months, providing an ever growing list of Enterprise Content Management features.